

**TLE1 Antibody (N-term)**  
**Purified Rabbit Polyclonal Antibody (Pab)**  
**Catalog # AP21016a****Specification**

---

**TLE1 Antibody (N-term) - Product Information**

Application	IF, WB,E
Primary Accession	<a href="#">Q04724</a>
Reactivity	Human
Host	Rabbit
Clonality	Polyclonal
Isotype	Rabbit IgG
Calculated MW	83201

**TLE1 Antibody (N-term) - Additional Information****Gene ID** 7088**Other Names**

Transducin-like enhancer protein 1, E(Sp1) homolog, Enhancer of split groucho-like protein 1, ESG1, TLE1

**Target/Specificity**

This TLE1 antibody is generated from a rabbit immunized with a KLH conjugated synthetic peptide between 187-221 amino acids from the N-terminal region of human TLE1.

**Dilution**

IF~~1:25

WB~~1:1000

**Format**

Purified polyclonal antibody supplied in PBS with 0.09% (W/V) sodium azide. This antibody is purified through a protein A column, followed by peptide affinity purification.

**Storage**

Maintain refrigerated at 2-8°C for up to 2 weeks. For long term storage store at -20°C in small aliquots to prevent freeze-thaw cycles.

**Precautions**

TLE1 Antibody (N-term) is for research use only and not for use in diagnostic or therapeutic procedures.

**TLE1 Antibody (N-term) - Protein Information****Name** TLE1

**Function** Transcriptional corepressor that binds to a number of transcription factors. Inhibits NF-kappa-B-regulated gene expression. Inhibits the transcriptional activation mediated by FOXA2,

and by CTNNB1 and TCF family members in Wnt signaling. Enhances FOXG1/BF- 1- and HES1-mediated transcriptional repression (By similarity). The effects of full-length TLE family members may be modulated by association with dominant-negative AES. Unusual function as coactivator for ESRRG.

#### Cellular Location

Nucleus. Note=Nuclear and chromatin-associated, depending on isoforms and phosphorylation status. Hyperphosphorylation decreases the affinity for nuclear components

#### Tissue Location

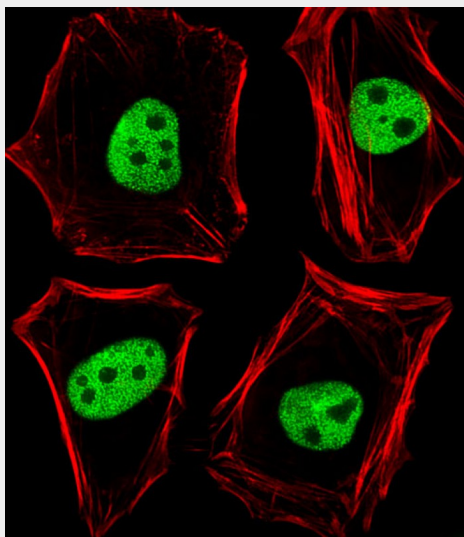
In all tissues examined, mostly in brain, liver and muscle

### TLE1 Antibody (N-term) - Protocols

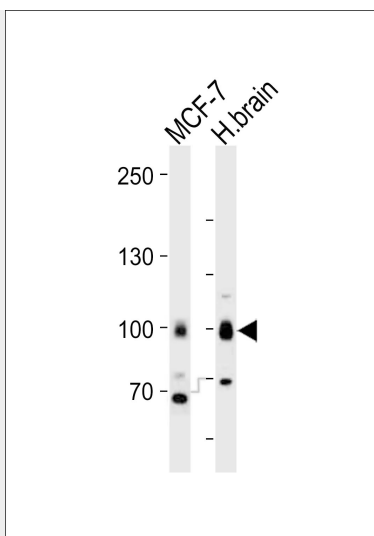
Provided below are standard protocols that you may find useful for product applications.

- [Western Blot](#)
- [Blocking Peptides](#)
- [Dot Blot](#)
- [Immunohistochemistry](#)
- [Immunofluorescence](#)
- [Immunoprecipitation](#)
- [Flow Cytometry](#)
- [Cell Culture](#)

### TLE1 Antibody (N-term) - Images



Fluorescent image of HeLa cells stained with TLE1 Antibody (N-term)(Cat#AP21016a). AP21016a was diluted at 1:25 dilution. An Alexa Fluor 488-conjugated goat anti-rabbit IgG at 1:400 dilution was used as the secondary antibody (green). Cytoplasmic actin was counterstained with Alexa Fluor® 555 conjugated with Phalloidin (red).



Western blot analysis of lysates from MCF-7, H.brain cell line (from left to right), using TLE1 Antibody (N-term)(Cat. #AP21016a). AP21016a was diluted at 1:1000 at each lane. A goat anti-rabbit IgG H&L(HRP) at 1:10000 dilution was used as the secondary antibody. Lysates at 20ug per lane.

#### **TLE1 Antibody (N-term) - Background**

Transcriptional corepressor that binds to a number of transcription factors. Inhibits NF-kappa-B-regulated gene expression. Inhibits the transcriptional activation mediated by FOXA2, and by CTNNB1 and TCF family members in Wnt signaling. The effects of full-length TLE family members may be modulated by association with dominant-negative AES. Unusual function as coactivator for ESRRG.

#### **TLE1 Antibody (N-term) - References**

Stifani S.,et al.Nat. Genet. 2:119-127(1992).  
Ota T.,et al.Nat. Genet. 36:40-45(2004).  
Humphray S.J.,et al.Nature 429:369-374(2004).  
Mural R.J.,et al.Submitted (JUL-2005) to the EMBL/GenBank/DDBJ databases.  
Wang J.-C.,et al.J. Biol. Chem. 275:18418-18423(2000).