

KDM1B Antibody (N-term)
Purified Rabbit Polyclonal Antibody (Pab)
Catalog # AP21020a**Specification**

KDM1B Antibody (N-term) - Product Information

Application	WB,E
Primary Accession	Q8NB78
Reactivity	Human
Host	Rabbit
Clonality	Polyclonal
Isotype	Rabbit IgG
Calculated MW	92098

KDM1B Antibody (N-term) - Additional Information**Gene ID** 221656**Other Names**

Lysine-specific histone demethylase 1B, 1---, Flavin-containing amine oxidase domain-containing protein 1, Lysine-specific histone demethylase 2, KDM1B, AOF1, C6orf193, LSD2

Target/Specificity

This KDM1B antibody is generated from a rabbit immunized with a KLH conjugated synthetic peptide between 38-73 amino acids from the N-terminal region of human KDM1B.

Dilution

WB~~1:1000

Format

Purified polyclonal antibody supplied in PBS with 0.09% (W/V) sodium azide. This antibody is purified through a protein A column, followed by peptide affinity purification.

Storage

Maintain refrigerated at 2-8°C for up to 2 weeks. For long term storage store at -20°C in small aliquots to prevent freeze-thaw cycles.

Precautions

KDM1B Antibody (N-term) is for research use only and not for use in diagnostic or therapeutic procedures.

KDM1B Antibody (N-term) - Protein Information**Name** KDM1B ([HGNC:21577](#))

Function Histone demethylase that demethylates 'Lys-4' of histone H3, a specific tag for epigenetic transcriptional activation, thereby acting as a corepressor. Required for de novo DNA methylation of a subset of imprinted genes during oogenesis. Acts by oxidizing the substrate by

FAD to generate the corresponding imine that is subsequently hydrolyzed. Demethylates both mono- and di-methylated 'Lys-4' of histone H3. Has no effect on tri-methylated 'Lys-4', mono-, di- or tri-methylated 'Lys-9', mono-, di- or tri-methylated 'Lys-27', mono-, di- or tri-methylated 'Lys-36' of histone H3, or on mono-, di- or tri-methylated 'Lys-20' of histone H4. Alone, it is unable to demethylate H3K4me on nucleosomes and requires the presence of GLYR1 to achieve such activity, they form a multifunctional enzyme complex that modifies transcribed chromatin and facilitates Pol II transcription through nucleosomes (PubMed:[30970244](#)).

Cellular Location

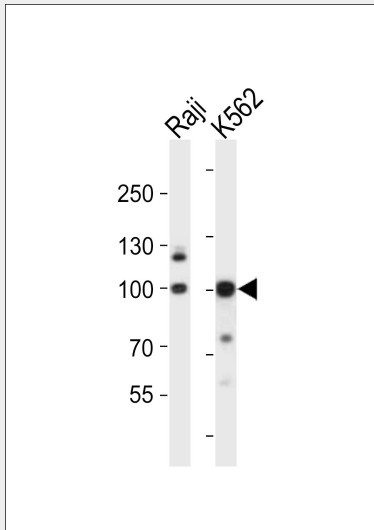
Nucleus. Chromosome. Note=Found in actively RNAPolIII- transcribed gene bodies.

KDM1B Antibody (N-term) - Protocols

Provided below are standard protocols that you may find useful for product applications.

- [Western Blot](#)
- [Blocking Peptides](#)
- [Dot Blot](#)
- [Immunohistochemistry](#)
- [Immunofluorescence](#)
- [Immunoprecipitation](#)
- [Flow Cytometry](#)
- [Cell Culture](#)

KDM1B Antibody (N-term) - Images



Western blot analysis of lysates from Raji, K562 cell line (from left to right), using KDM1B Antibody (N-term)(Cat. #AP21020a). AP21020a was diluted at 1:1000 at each lane. A goat anti-rabbit IgG H&L(HRP) at 1:10000 dilution was used as the secondary antibody. Lysates at 20ug per lane.

KDM1B Antibody (N-term) - Background

Histone demethylase that demethylates 'Lys-4' of histone H3, a specific tag for epigenetic transcriptional activation, thereby acting as a corepressor. Required for de novo DNA methylation of a subset of imprinted genes during oogenesis. Acts by oxidizing the substrate by FAD to generate the corresponding imine that is subsequently hydrolyzed. Demethylates both mono- and

di-methylated 'Lys-4' of histone H3. Has no effect on tri- methylated 'Lys-4', mono-, di- or tri-methylated 'Lys-9', mono-, di- or tri-methylated 'Lys-27', mono-, di- or tri-methylated 'Lys- 36' of histone H3, or on mono-, di- or tri-methylated 'Lys-20' of histone H4 (By similarity).

KDM1B Antibody (N-term) - References

Ota T.,et al.Nat. Genet. 36:40-45(2004).

Mungall A.J.,et al.Nature 425:805-811(2003).

Mural R.J.,et al.Submitted (JUL-2005) to the EMBL/GenBank/DDBJ databases.

Bechtel S.,et al.BMC Genomics 8:399-399(2007).

Cantin G.T.,et al.J. Proteome Res. 7:1346-1351(2008).