

LIFR Antibody (C-term)
Purified Rabbit Polyclonal Antibody (Pab)
Catalog # AP21029c

Specification

LIFR Antibody (C-term) - Product Information

Application	WB,E
Primary Accession	P42702
Reactivity	Human
Host	Rabbit
Clonality	Polyclonal
Isotype	Rabbit IgG
Calculated MW	123743

LIFR Antibody (C-term) - Additional Information

Gene ID 3977

Other Names

Leukemia inhibitory factor receptor, LIF receptor, LIF-R, CD118, LIFR

Target/Specificity

This LIFR antibody is generated from a rabbit immunized with a KLH conjugated synthetic peptide between 1021-1055 amino acids from the C-terminal region of human LIFR.

Dilution

WB~~1:2000

Format

Purified polyclonal antibody supplied in PBS with 0.09% (W/V) sodium azide. This antibody is purified through a protein A column, followed by peptide affinity purification.

Storage

Maintain refrigerated at 2-8°C for up to 2 weeks. For long term storage store at -20°C in small aliquots to prevent freeze-thaw cycles.

Precautions

LIFR Antibody (C-term) is for research use only and not for use in diagnostic or therapeutic procedures.

LIFR Antibody (C-term) - Protein Information

Name LIFR

Function Signal-transducing molecule. May have a common pathway with IL6ST. The soluble form inhibits the biological activity of LIF by blocking its binding to receptors on target cells.

Cellular Location

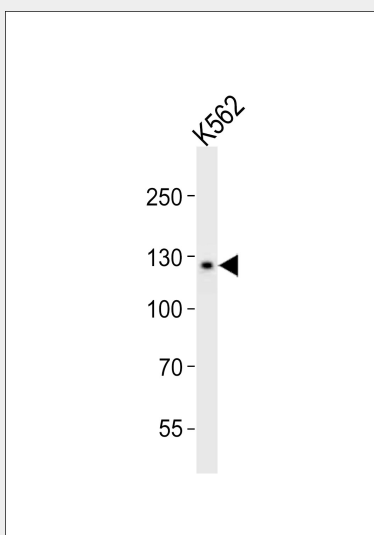
[Isoform 1]: Cell membrane; Single-pass type I membrane protein

LIFR Antibody (C-term) - Protocols

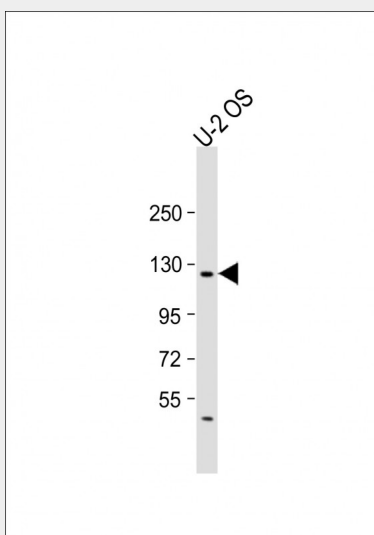
Provided below are standard protocols that you may find useful for product applications.

- [Western Blot](#)
- [Blocking Peptides](#)
- [Dot Blot](#)
- [Immunohistochemistry](#)
- [Immunofluorescence](#)
- [Immunoprecipitation](#)
- [Flow Cytometry](#)
- [Cell Culture](#)

LIFR Antibody (C-term) - Images



Western blot analysis of lysate from K562 cell line, using LIFR Antibody (C-term)(Cat. #AP21029c). AP21029c was diluted at 1:1000. A goat anti-rabbit IgG H&L(HRP) at 1:10000 dilution was used as the secondary antibody. Lysate at 20ug.



Anti-LIFR Antibody (C-term) at 1:2000 dilution + U-2OS whole cell lysate Lysates/proteins at 20 µg per lane. Secondary Goat Anti-Rabbit IgG, (H+L), Peroxidase conjugated at 1/10000 dilution. Predicted band size : 124 kDa Blocking/Dilution buffer: 5% NFDM/TBST.

LIFR Antibody (C-term) - Background

Signal-transducing molecule. May have a common pathway with IL6ST. The soluble form inhibits the biological activity of LIF by blocking its binding to receptors on target cells.

LIFR Antibody (C-term) - References

Gearing D.P.,et al.EMBO J. 10:2839-2848(1991).
Wang Z.,et al.Submitted (AUG-1996) to the EMBL/GenBank/DDBJ databases.
Voz M.L.,et al.Oncogene 16:1409-1416(1998).
Dephoure N.,et al.Proc. Natl. Acad. Sci. U.S.A. 105:10762-10767(2008).
Skiniotis G.,et al.Mol. Cell 31:737-748(2008).