

**UTF1 Antibody (Center)**  
**Purified Rabbit Polyclonal Antibody (Pab)**  
**Catalog # AP21043a****Specification**

---

**UTF1 Antibody (Center) - Product Information**

Application	WB,E
Primary Accession	<a href="#">Q5T230</a>
Reactivity	Human
Host	Rabbit
Clonality	Polyclonal
Isotype	Rabbit IgG
Calculated MW	36439

**UTF1 Antibody (Center) - Additional Information****Gene ID** 8433**Other Names**

Undifferentiated embryonic cell transcription factor 1, UTF1 (<a href="http://www.genenames.org/cgi-bin/gene\_symbol\_report?hgnc\_id=12634" target="\_blank">HGNC:12634</a>)

**Target/Specificity**

This UTF1 antibody is generated from a rabbit immunized with a KLH conjugated synthetic peptide between 164-199 amino acids from the Central region of human UTF1.

**Dilution**

WB~~1:1000

**Format**

Purified polyclonal antibody supplied in PBS with 0.09% (W/V) sodium azide. This antibody is purified through a protein A column, followed by peptide affinity purification.

**Storage**

Maintain refrigerated at 2-8°C for up to 2 weeks. For long term storage store at -20°C in small aliquots to prevent freeze-thaw cycles.

**Precautions**

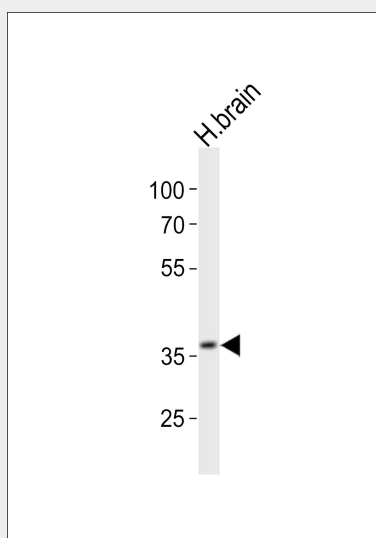
UTF1 Antibody (Center) is for research use only and not for use in diagnostic or therapeutic procedures.

**UTF1 Antibody (Center) - Protein Information****Name** UTF1 ([HGNC:12634](#))**Function** Acts as a transcriptional coactivator of ATF2.

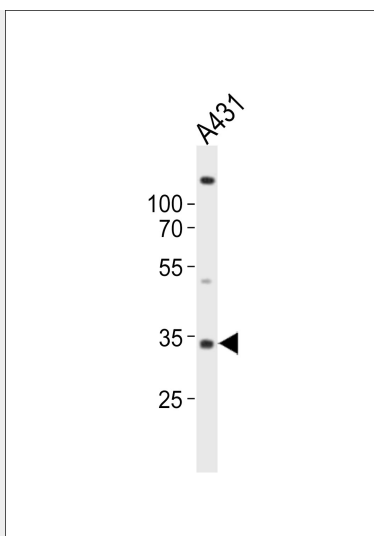
**Cellular Location**  
Nucleus.**UTF1 Antibody (Center) - Protocols**

Provided below are standard protocols that you may find useful for product applications.

- [Western Blot](#)
- [Blocking Peptides](#)
- [Dot Blot](#)
- [Immunohistochemistry](#)
- [Immunofluorescence](#)
- [Immunoprecipitation](#)
- [Flow Cytometry](#)
- [Cell Culture](#)

**UTF1 Antibody (Center) - Images**

Western blot analysis of lysate from human brain tissue lysate , using UTF1 Antibody (Center)(Cat. #AP21043a). AP21043a was diluted at 1:1000. A goat anti-rabbit IgG H&L(HRP) at 1:10000 dilution was used as the secondary antibody. Lysate at 20ug.



Western blot analysis of lysate from A431 cell line, using UTF1 Antibody (Center)(Cat. #AP21043a). AP21043a was diluted at 1:1000. A goat anti-rabbit IgG H&L(HRP) at 1:10000 dilution was used as the secondary antibody. Lysate at 20ug.

#### **UTF1 Antibody (Center) - Background**

Acts as a transcriptional coactivator of ATF2.

#### **UTF1 Antibody (Center) - References**

Fukushima A.,et al.J. Biol. Chem. 273:25840-25849(1998).  
Fukushima A.,et al.Submitted (OCT-2008) to the EMBL/GenBank/DDBJ databases.  
Xiang Y.,et al.Submitted (APR-2004) to the EMBL/GenBank/DDBJ databases.  
Deloukas P.,et al.Nature 429:375-381(2004).  
Rigbolt K.T.,et al.Sci. Signal. 4:RS3-RS3(2011).