

**(Mouse) Eras Antibody (N-term)**  
**Purified Rabbit Polyclonal Antibody (Pab)**  
**Catalog # AP21063a**

**Specification**

---

**(Mouse) Eras Antibody (N-term) - Product Information**

Application	WB, FC,E
Primary Accession	<a href="#">Q7TN89</a>
Reactivity	Mouse
Host	Rabbit
Clonality	Polyclonal
Isotype	Rabbit IgG
Calculated MW	24321

**(Mouse) Eras Antibody (N-term) - Additional Information**

**Gene ID** 353283

**Other Names**

GTPase ERas, E-Ras, Embryonic stem cell-expressed Ras, Eras

**Target/Specificity**

This (Mouse) Eras antibody is generated from a rabbit immunized with a KLH conjugated synthetic peptide between 19-52 amino acids from the N-terminal region of mouse Eras.

**Dilution**

WB~~1:1000

FC~~1:25

**Format**

Purified polyclonal antibody supplied in PBS with 0.09% (W/V) sodium azide. This antibody is purified through a protein A column, followed by peptide affinity purification.

**Storage**

Maintain refrigerated at 2-8°C for up to 2 weeks. For long term storage store at -20°C in small aliquots to prevent freeze-thaw cycles.

**Precautions**

(Mouse) Eras Antibody (N-term) is for research use only and not for use in diagnostic or therapeutic procedures.

**(Mouse) Eras Antibody (N-term) - Protein Information**

**Name** Eras

**Function** Ras proteins bind GDP/GTP and possess intrinsic GTPase activity. Plays an important role in the tumor-like growth properties of embryonic stem cells.

**Cellular Location**

Cell membrane; Lipid-anchor; Cytoplasmic side

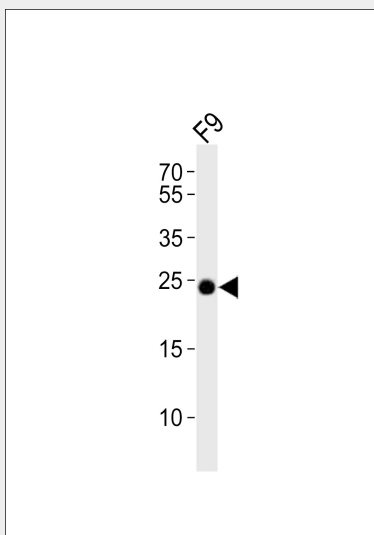
**Tissue Location**

Expressed in several undifferentiated mouse embryonic stem cell lines.

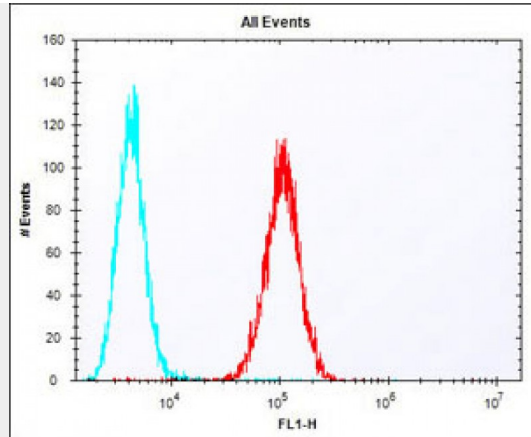
**(Mouse) Eras Antibody (N-term) - Protocols**

Provided below are standard protocols that you may find useful for product applications.

- [Western Blot](#)
- [Blocking Peptides](#)
- [Dot Blot](#)
- [Immunohistochemistry](#)
- [Immunofluorescence](#)
- [Immunoprecipitation](#)
- [Flow Cytometry](#)
- [Cell Culture](#)

**(Mouse) Eras Antibody (N-term) - Images**

Western blot analysis of lysate from mouse F9 cell line, using Eras Antibody (N-term)(Cat. #AP21063a). AP21063a was diluted at 1:1000. A goat anti-rabbit IgG H&L(HRP) at 1:10000 dilution was used as the secondary antibody. Lysate at 20ug.



Overlay histogram showing F9 cells stained with AP21063a (red line). The cells were fixed with 2% paraformaldehyde (10 min) and then permeabilized with 90% methanol for 10 min. The cells were then incubated in 2% bovine serum albumin to block non-specific protein-protein interactions followed by the antibody (AP21063a, 1:25 dilution) for 60 min at 37°C. The secondary antibody used was Alexa Fluor® 488 goat anti-rabbit IgG (H+L) (1583138) at 1/400 dilution for 40 min at 37°C. Isotype control antibody (blue line) was rabbit IgG1 (1µg/1x10<sup>6</sup> cells) used under the same conditions. Acquisition of >10, 000 events was performed.

#### **(Mouse) Eras Antibody (N-term) - Background**

Ras proteins bind GDP/GTP and possess intrinsic GTPase activity. Plays an important role in the tumor-like growth properties of embryonic stem cells.

#### **(Mouse) Eras Antibody (N-term) - References**

Takahashi K., et al. Nature 423:541-545(2003).  
Carninci P., et al. Science 309:1559-1563(2005).