

(DANRE) map1lc3a Antibody (C-Term)
Purified Rabbit Polyclonal Antibody (Pab)
Catalog # AP21075a

Specification

(DANRE) map1lc3a Antibody (C-Term) - Product Information

Application	WB,E
Primary Accession	Q6NX90
Reactivity	Human
Predicted	Zebrafish
Host	Rabbit
Clonality	Polyclonal
Isotype	Rabbit IgG

(DANRE) map1lc3a Antibody (C-Term) - Additional Information

Gene ID 406466

Target/Specificity

This DANRE map1lc3a antibody is generated from a rabbit immunized with a KLH conjugated synthetic peptide between 91-123 amino acids from the region of DANRE map1lc3a.

Dilution

WB~~1:1000

Format

Purified polyclonal antibody supplied in PBS with 0.09% (W/V) sodium azide. This antibody is purified through a protein A column, followed by peptide affinity purification.

Storage

Maintain refrigerated at 2-8°C for up to 2 weeks. For long term storage store at -20°C in small aliquots to prevent freeze-thaw cycles.

Precautions

(DANRE) map1lc3a Antibody (C-Term) is for research use only and not for use in diagnostic or therapeutic procedures.

(DANRE) map1lc3a Antibody (C-Term) - Protein Information

Name Q6NX90

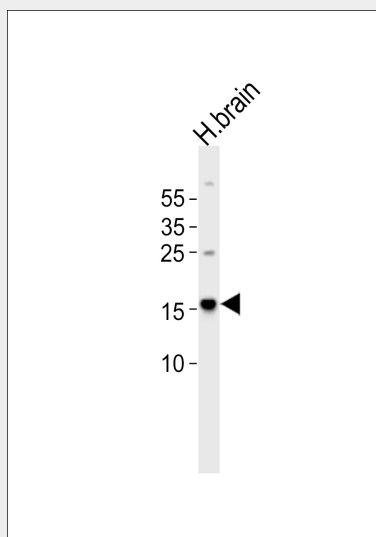
(DANRE) map1lc3a Antibody (C-Term) - Protocols

Provided below are standard protocols that you may find useful for product applications.

- [Western Blot](#)

- [Blocking Peptides](#)
- [Dot Blot](#)
- [Immunohistochemistry](#)
- [Immunofluorescence](#)
- [Immunoprecipitation](#)
- [Flow Cytometry](#)
- [Cell Culture](#)

(DANRE) map1lc3a Antibody (C-Term) - Images



Western blot analysis of lysate from human brain tissue, using DANRE map1lc3a Antibody (CTerm)(Cat. #AP21075a). AP21075a was diluted at 1:1000. A goat anti-rabbit IgG H&L(HRP) at 1:10000 dilution was used as the secondary antibody. Lysate at 20ug.