

Mouse Pax6 Antibody (C-term)
Purified Rabbit Polyclonal Antibody (Pab)
Catalog # AP21096a**Specification**

Mouse Pax6 Antibody (C-term) - Product Information

Application	WB,E
Primary Accession	P63015
Other Accession	P55864 , P63016 , P26367 , P26630 , P47237 , Q1LZF1
Reactivity	Mouse
Predicted	Bovine, Chicken, Zebrafish, Human, Rat, Xenopus
Host	Rabbit
Clonality	Polyclonal
Isotype	Rabbit IgG
Calculated MW	46683

Mouse Pax6 Antibody (C-term) - Additional Information**Gene ID** 18508**Other Names**

Paired box protein Pax-6, Oculorhombin, Pax6, Pax-6, Sey

Target/Specificity

This Mouse Pax6 antibody is generated from a rabbit immunized with a KLH conjugated synthetic peptide between 404-436 amino acids from the C-terminal region of Mouse Pax6.

Dilution

WB~~1:1000

Format

Purified polyclonal antibody supplied in PBS with 0.09% (W/V) sodium azide. This antibody is purified through a protein A column, followed by peptide affinity purification.

Storage

Maintain refrigerated at 2-8°C for up to 2 weeks. For long term storage store at -20°C in small aliquots to prevent freeze-thaw cycles.

Precautions

Mouse Pax6 Antibody (C-term) is for research use only and not for use in diagnostic or therapeutic procedures.

Mouse Pax6 Antibody (C-term) - Protein Information**Name** Pax6

Synonyms Pax-6, Sey

Function Transcription factor with important functions in the development of the eye, nose, central nervous system and pancreas. Required for the differentiation of pancreatic islet alpha cells (PubMed:[9163426](#)). Competes with PAX4 in binding to a common element in the glucagon, insulin and somatostatin promoters. Regulates specification of the ventral neuron subtypes by establishing the correct progenitor domains (By similarity). Acts as a transcriptional repressor of NFATC1-mediated gene expression (PubMed:[23990468](#)).

Cellular Location

Nucleus. [Isoform 3]: Nucleus. Cytoplasm

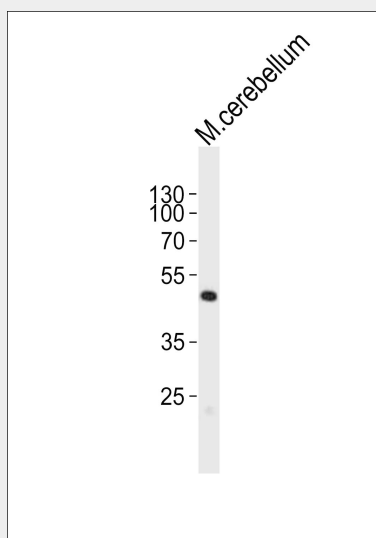
Tissue Location

Expressed in osteoclasts. [Isoform 3]: Dominant isoform expressed in the eye, including in the retina and cornea (PubMed:21084637). Weakly expressed in the lens epithelium (PubMed:21084637)

Mouse Pax6 Antibody (C-term) - Protocols

Provided below are standard protocols that you may find useful for product applications.

- [Western Blot](#)
- [Blocking Peptides](#)
- [Dot Blot](#)
- [Immunohistochemistry](#)
- [Immunofluorescence](#)
- [Immunoprecipitation](#)
- [Flow Cytometry](#)
- [Cell Culture](#)

Mouse Pax6 Antibody (C-term) - Images

Western blot analysis of lysate from mouse cerebellum tissue lysate, using Pax6 Antibody (C-term)(Cat. #AP21096a). AP21096a was diluted at 1:1000. A goat anti-rabbit IgG H&L(HRP) at 1:10000 dilution was used as the secondary antibody. Lysate at 20ug.

Mouse Pax6 Antibody (C-term) - Background

Transcription factor with important functions in the development of the eye, nose, central nervous system and pancreas. Required for the differentiation of pancreatic islet alpha cells. Competes with PAX4 in binding to a common element in the glucagon, insulin and somatostatin promoters. Regulates specification of the ventral neuron subtypes by establishing the correct progenitor domains (By similarity).

Mouse Pax6 Antibody (C-term) - References

Walther C.,et al.Development 113:1435-1449(1991).
Favor J.,et al.Genetics 159:1689-1700(2001).
Carninci P.,et al.Science 309:1559-1563(2005).
Walther C.,et al.Genomics 11:424-434(1991).
Ton C.C.T.,et al.Genomics 13:251-256(1992).