

**CXCL11 Antibody**  
**Purified Rabbit Polyclonal Antibody (Pab)**  
**Catalog # AP21132a****Specification**

---

**CXCL11 Antibody - Product Information**

Application	WB,E
Primary Accession	<a href="#">O14625</a>
Reactivity	Rat
Host	Rabbit
Clonality	polyclonal
Isotype	Rabbit IgG
Calculated MW	10365

**CXCL11 Antibody - Additional Information****Gene ID** 6373**Other Names**

C-X-C motif chemokine 11, Beta-R1, H174, Interferon gamma-inducible protein 9, IP-9, Interferon-inducible T-cell alpha chemoattractant, I-TAC, Small-inducible cytokine B11, CXCL11, ITAC, SCYB11, SCYB9B

**Target/Specificity**

This CXCL11 antibody is generated from a rabbit immunized with a recombinant protein of human CXCL11.

**Dilution**

WB~~1:1000

**Format**

Purified polyclonal antibody supplied in PBS with 0.09% (W/V) sodium azide. This antibody is purified through a protein A column, followed by peptide affinity purification.

**Storage**

Maintain refrigerated at 2-8°C for up to 2 weeks. For long term storage store at -20°C in small aliquots to prevent freeze-thaw cycles.

**Precautions**

CXCL11 Antibody is for research use only and not for use in diagnostic or therapeutic procedures.

**CXCL11 Antibody - Protein Information****Name** CXCL11**Synonyms** ITAC, SCYB11, SCYB9B**Function** Chemotactic for interleukin-activated T-cells but not unstimulated T-cells, neutrophils or

monocytes. Induces calcium release in activated T-cells. Binds to CXCR3. May play an important role in CNS diseases which involve T-cell recruitment. May play a role in skin immune responses.

#### Cellular Location

Secreted.

#### Tissue Location

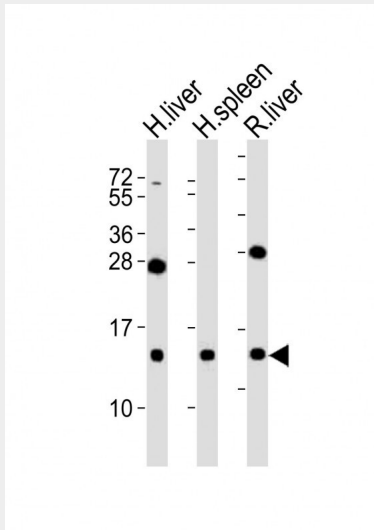
High levels in peripheral blood leukocytes, pancreas and liver astrocytes. Moderate levels in thymus, spleen and lung. Low levels in placenta, prostate and small intestine. Also found in epidermal basal layer keratinocytes in skin disorders

### CXCL11 Antibody - Protocols

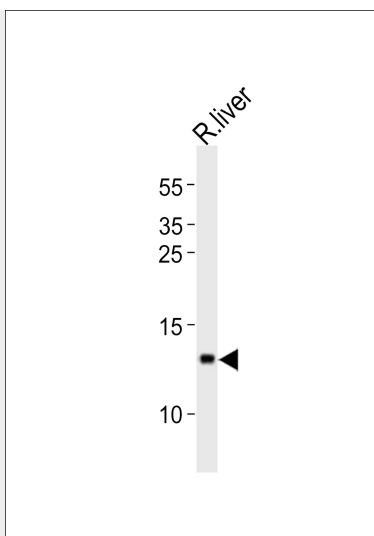
Provided below are standard protocols that you may find useful for product applications.

- [Western Blot](#)
- [Blocking Peptides](#)
- [Dot Blot](#)
- [Immunohistochemistry](#)
- [Immunofluorescence](#)
- [Immunoprecipitation](#)
- [Flow Cytometry](#)
- [Cell Culture](#)

### CXCL11 Antibody - Images



All lanes : Anti-CXCL11 Antibody at 1:2000 dilution Lane 1: human liver lysates Lane 2: human spleen lysates Lane 3: rat liver lysates Lysates/proteins at 20 µg per lane. Secondary Goat Anti-Rabbit IgG, (H+L), Peroxidase conjugated at 1/10000 dilution Predicted band size : 10 kDa Blocking/Dilution buffer: 5% NFDM/TBST.



Western blot analysis of lysate from rat liver tissue lysate, using CXCL11 Antibody (Cat. #AP21132a). AP21132a was diluted at 1:1000. A goat anti-rabbit IgG H&L(HRP) at 1:10000 dilution was used as the secondary antibody. Lysate at 20ug.

#### **CXCL11 Antibody - Background**

Chemotactic for interleukin-activated T-cells but not unstimulated T-cells, neutrophils or monocytes. Induces calcium release in activated T-cells. Binds to CXCR3. May play an important role in CNS diseases which involve T-cell recruitment. May play a role in skin immune responses.

#### **CXCL11 Antibody - References**

Rani M.R.S., et al. J. Biol. Chem. 271:22878-22884(1996).  
Jacobs K.A., et al. Gene 198:289-296(1997).  
Cole K.E., et al. J. Exp. Med. 187:2009-2021(1998).  
Tensen C.P., et al. J. Invest. Dermatol. 112:716-722(1999).  
Laich A.M., et al. J. Interferon Cytokine Res. 19:505-513(1999).