

**(DANRE) gpr126 Antibody (C-term)**  
**Purified Rabbit Polyclonal Antibody (Pab)**  
**Catalog # AP21136a**

**Specification**

---

**(DANRE) gpr126 Antibody (C-term) - Product Information**

Application	WB,E
Primary Accession	<a href="#">C6KFA3</a>
Reactivity	Zebrafish
Host	Rabbit
Clonality	polyclonal
Isotype	Rabbit IgG
Calculated MW	130813
Antigen Region	1135-1169

**(DANRE) gpr126 Antibody (C-term) - Additional Information**

**Gene ID** 561970

**Other Names**

G-protein coupled receptor 126, gpr126

**Target/Specificity**

This DANRE gpr126 antibody is generated from a rabbit immunized with a KLH conjugated synthetic peptide between 1135-1169 amino acids from the C-terminal region of DANRE gpr126.

**Dilution**

WB~~1:500

**Format**

Purified polyclonal antibody supplied in PBS with 0.09% (W/V) sodium azide. This antibody is purified through a protein A column, followed by peptide affinity purification.

**Storage**

Maintain refrigerated at 2-8°C for up to 2 weeks. For long term storage store at -20°C in small aliquots to prevent freeze-thaw cycles.

**Precautions**

(DANRE) gpr126 Antibody (C-term) is for research use only and not for use in diagnostic or therapeutic procedures.

**(DANRE) gpr126 Antibody (C-term) - Protein Information**

**Name** adgrg6

**Synonyms** gpr126

**Function** G-protein coupled receptor which is activated by type IV collagen, a major constituent of

the basement membrane. Couples to G(i)-proteins as well as G(s)-proteins (PubMed:[25118328](#)). Essential for normal differentiation of promyelinating Schwann cells and for normal myelination of axons (PubMed:[19745155](#)). Also plays a role in inner ear development (PubMed:[24067352](#)).

**Cellular Location**

Cell membrane; Multi-pass membrane protein

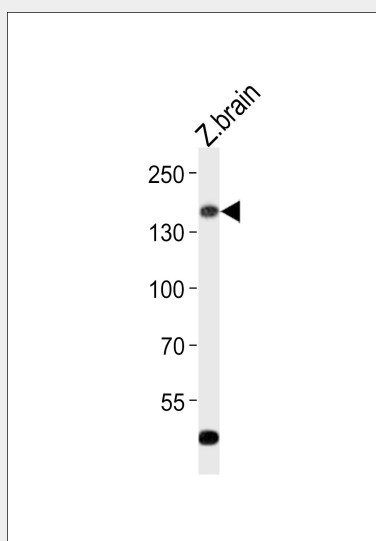
**Tissue Location**

Expressed in Schwann cells of the posterior lateral line nerve and in brain.

**(DANRE) gpr126 Antibody (C-term) - Protocols**

Provided below are standard protocols that you may find useful for product applications.

- [Western Blot](#)
- [Blocking Peptides](#)
- [Dot Blot](#)
- [Immunohistochemistry](#)
- [Immunofluorescence](#)
- [Immunoprecipitation](#)
- [Flow Cytometry](#)
- [Cell Culture](#)

**(DANRE) gpr126 Antibody (C-term) - Images**

Western blot analysis of lysate from zebra fish brain tissue lysate, using (DANRE) gpr126 Antibody (C-term)(Cat. #AP21136a). AP21136a was diluted at 1:500. A goat anti-rabbit IgG H&L(HRP) at 1:10000 dilution was used as the secondary antibody. Lysate at 20ug.

**(DANRE) gpr126 Antibody (C-term) - Background**

Orphan receptor. Required for normal differentiation of promyelinating Schwann cells and for normal myelination of axons. Signals probably through G-proteins to transiently elevate cAMP levels. Required for normal expression of the transcription factors oct6 and krox20 that are required for Schwann cells to initiate myelination.

**(DANRE) gpr126 Antibody (C-term) - References**

Monk K.R.,et al.Science 325:1402-1405(2009).