

**HS6ST2 Antibody (C-term)**  
**Purified Rabbit Polyclonal Antibody (Pab)**  
**Catalog # AP21139a****Specification**

---

**HS6ST2 Antibody (C-term) - Product Information**

|                   |                        |
|-------------------|------------------------|
| Application       | WB,E                   |
| Primary Accession | <a href="#">Q96MM7</a> |
| Reactivity        | Human                  |
| Host              | Rabbit                 |
| Clonality         | polyclonal             |
| Isotype           | Rabbit IgG             |
| Calculated MW     | 69130                  |

**HS6ST2 Antibody (C-term) - Additional Information****Gene ID** 90161**Other Names**

Heparan-sulfate 6-O-sulfotransferase 2, HS6ST-2, 282-, HS6ST2

**Target/Specificity**

This HS6ST2 antibody is generated from a rabbit immunized with a KLH conjugated synthetic peptide between 497-530 amino acids from the C-terminal region of human HS6ST2.

**Dilution**

WB~~1:1000

**Format**

Purified polyclonal antibody supplied in PBS with 0.09% (W/V) sodium azide. This antibody is purified through a protein A column, followed by peptide affinity purification.

**Storage**

Maintain refrigerated at 2-8°C for up to 2 weeks. For long term storage store at -20°C in small aliquots to prevent freeze-thaw cycles.

**Precautions**

HS6ST2 Antibody (C-term) is for research use only and not for use in diagnostic or therapeutic procedures.

**HS6ST2 Antibody (C-term) - Protein Information****Name** HS6ST2 ([HGNC:19133](#))

**Function** 6-O-sulfation enzyme which catalyzes the transfer of sulfate from 3'-phosphoadenosine 5'-phosphosulfate (PAPS) to position 6 of the N-sulfoglucosamine residue (GlcNS) of heparan sulfate.

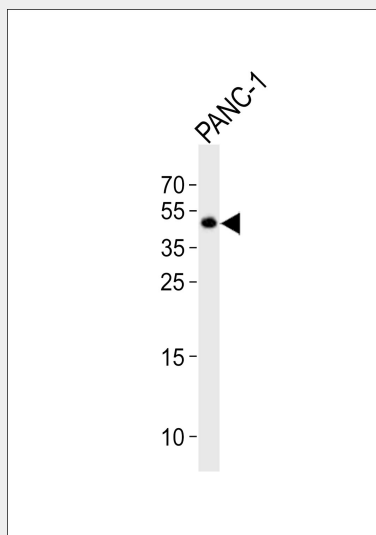
**Cellular Location**

Membrane; Single-pass type II membrane protein

**HS6ST2 Antibody (C-term) - Protocols**

Provided below are standard protocols that you may find useful for product applications.

- [Western Blot](#)
- [Blocking Peptides](#)
- [Dot Blot](#)
- [Immunohistochemistry](#)
- [Immunofluorescence](#)
- [Immunoprecipitation](#)
- [Flow Cytometry](#)
- [Cell Culture](#)

**HS6ST2 Antibody (C-term) - Images**

Western blot analysis of lysate from PANC-1 cell line, using HS6ST2 Antibody (C-term)(Cat. #AP21139a). AP21139a was diluted at 1:1000. A goat anti-rabbit IgG H&L(HRP) at 1:10000 dilution was used as the secondary antibody. Lysate at 20ug.

**HS6ST2 Antibody (C-term) - Background**

6-O-sulfation enzyme which catalyzes the transfer of sulfate from 3'-phosphoadenosine 5'-phosphosulfate (PAPS) to position 6 of the N-sulfoglucosamine residue (GlcNS) of heparan sulfate.

**HS6ST2 Antibody (C-term) - References**

Habuchi H.,et al.Biochem. J. 371:131-142(2003).  
Ota T.,et al.Nat. Genet. 36:40-45(2004).  
Ross M.T.,et al.Nature 434:325-337(2005).  
Otsuki T.,et al.DNA Res. 12:117-126(2005).  
Bechtel S.,et al.BMC Genomics 8:399-399(2007).