

**LRTOMT Antibody (N-term)**  
**Purified Rabbit Polyclonal Antibody (Pab)**  
**Catalog # AP21148a****Specification**

---

**LRTOMT Antibody (N-term) - Product Information**

Application	WB,E
Primary Accession	<a href="#">Q8WZ04</a>
Reactivity	Human
Host	Rabbit
Clonality	polyclonal
Isotype	Rabbit IgG
Calculated MW	32155

**LRTOMT Antibody (N-term) - Additional Information****Gene ID** 220074**Other Names**

Transmembrane O-methyltransferase, Catechol O-methyltransferase 2, Protein LRTOMT2, LRTOMT, COMT2, TOMT

**Target/Specificity**

This LRTOMT antibody is generated from a rabbit immunized with a KLH conjugated synthetic peptide between 2-36 amino acids from the N-terminal region of human LRTOMT.

**Dilution**

WB~~1:4000

**Format**

Purified polyclonal antibody supplied in PBS with 0.09% (W/V) sodium azide. This antibody is purified through a protein A column, followed by peptide affinity purification.

**Storage**

Maintain refrigerated at 2-8°C for up to 2 weeks. For long term storage store at -20°C in small aliquots to prevent freeze-thaw cycles.

**Precautions**

LRTOMT Antibody (N-term) is for research use only and not for use in diagnostic or therapeutic procedures.

**LRTOMT Antibody (N-term) - Protein Information****Name** TOMT ([HGNC:55527](#))**Function** Catalyzes the O-methylation, and thereby the inactivation, of catecholamine neurotransmitters and catechol hormones (By similarity). Required for auditory function (PubMed:[18794526](#)). Component of the cochlear hair cell's mechanotransduction (MET)

machinery. Involved in the assembly of the asymmetric tip-link MET complex. Required for transportation of TMC1 and TMC2 proteins into the mechanically sensitive stereocilia of the hair cells. The function in MET is independent of the enzymatic activity (By similarity).

#### **Cellular Location**

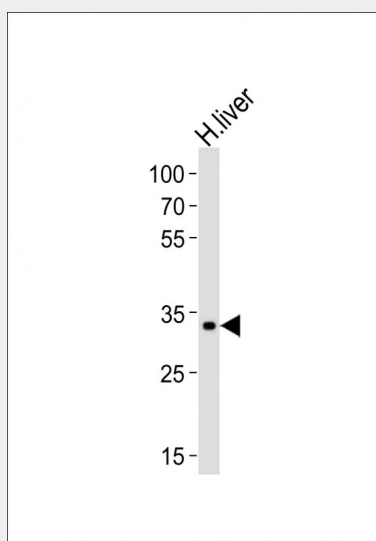
[Isoform 1]: Membrane; Single-pass membrane protein

#### **LRTOMT Antibody (N-term) - Protocols**

Provided below are standard protocols that you may find useful for product applications.

- [Western Blot](#)
- [Blocking Peptides](#)
- [Dot Blot](#)
- [Immunohistochemistry](#)
- [Immunofluorescence](#)
- [Immunoprecipitation](#)
- [Flow Cytometry](#)
- [Cell Culture](#)

#### **LRTOMT Antibody (N-term) - Images**



Western blot analysis of lysate from human liver tissue lysate, using LRTOMT Antibody (N-term)(Cat. #AP21148a). AP21148a was diluted at 1:4000. A goat anti-rabbit IgG H&L(HRP) at 1:10000 dilution was used as the secondary antibody. Lysate at 20ug.

#### **LRTOMT Antibody (N-term) - Background**

Catalyzes the O-methylation, and thereby the inactivation, of catecholamine neurotransmitters and catechol hormones (By similarity). Required for auditory function.

#### **LRTOMT Antibody (N-term) - References**

Ahmed Z.M.,et al.Nat. Genet. 40:1335-1340(2008).  
Wan D.,et al.Proc. Natl. Acad. Sci. U.S.A. 101:15724-15729(2004).  
Ota T.,et al.Nat. Genet. 36:40-45(2004).  
Taylor T.D.,et al.Nature 440:497-500(2006).

Du X., et al. Proc. Natl. Acad. Sci. U.S.A. 105:14609-14614(2008).