

LHX5 Antibody (Center)
Purified Rabbit Polyclonal Antibody (Pab)
Catalog # AP21158a**Specification**

LHX5 Antibody (Center) - Product Information

Application	WB,E
Primary Accession	O9H2C1
Reactivity	Rat
Host	Rabbit
Clonality	polyclonal
Isotype	Rabbit IgG
Calculated MW	44406

LHX5 Antibody (Center) - Additional Information**Gene ID** 64211**Other Names**

LIM/homeobox protein Lhx5, LIM homeobox protein 5, LHX5

Target/Specificity

This LHX5 antibody is generated from a rabbit immunized with a KLH conjugated synthetic peptide between 255-289 amino acids from the Central region of human LHX5.

Dilution

WB~~1:2000

Format

Purified polyclonal antibody supplied in PBS with 0.09% (W/V) sodium azide. This antibody is purified through a protein A column, followed by peptide affinity purification.

Storage

Maintain refrigerated at 2-8°C for up to 2 weeks. For long term storage store at -20°C in small aliquots to prevent freeze-thaw cycles.

Precautions

LHX5 Antibody (Center) is for research use only and not for use in diagnostic or therapeutic procedures.

LHX5 Antibody (Center) - Protein Information**Name** LHX5

Function Plays an essential role in the regulation of neuronal differentiation and migration during development of the central nervous system.

Cellular Location

Nucleus.

Tissue Location

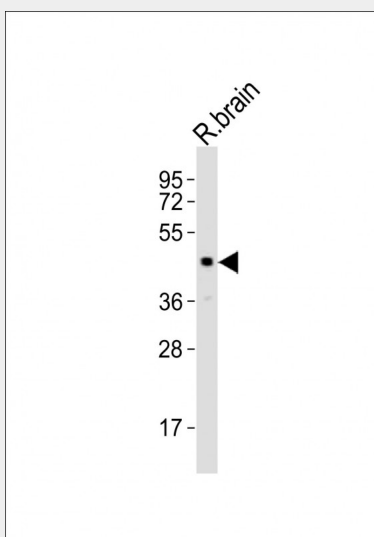
Expressed in fetal brain and in various regions of the adult central nervous system including the spinal cord, the thalamus, and the cerebellum

LHX5 Antibody (Center) - Protocols

Provided below are standard protocols that you may find useful for product applications.

- [Western Blot](#)
- [Blocking Peptides](#)
- [Dot Blot](#)
- [Immunohistochemistry](#)
- [Immunofluorescence](#)
- [Immunoprecipitation](#)
- [Flow Cytometry](#)
- [Cell Culture](#)

LHX5 Antibody (Center) - Images



Anti-LHX5 Antibody (Center) at 1:2000 dilution + rat brain lysates Lysates/proteins at 20 µg per lane. Secondary Goat Anti-Rabbit IgG, (H+L), Peroxidase conjugated at 1/10000 dilution Predicted band size : 44 kDa Blocking/Dilution buffer: 5% NFDM/TBST.

LHX5 Antibody (Center) - Background

Plays an essential role in the regulation of neuronal differentiation and migration during development of the central nervous system.

LHX5 Antibody (Center) - References

Zhao Y.,et al.Gene 260:95-101(2000).