

**(DANRE) atg5 Antibody (Center)**  
**Purified Rabbit Polyclonal Antibody (Pab)**  
**Catalog # AP21165a**

**Specification**

---

**(DANRE) atg5 Antibody (Center) - Product Information**

Application	WB,E
Primary Accession	<a href="#">Q6DEM4</a>
Reactivity	Human
Host	Rabbit
Clonality	polyclonal
Isotype	Rabbit IgG
Calculated MW	31872

**(DANRE) atg5 Antibody (Center) - Additional Information**

**Target/Specificity**

This (DANRE) atg5 antibody is generated from a rabbit immunized with a KLH conjugated synthetic peptide between 128-160 amino acids from the Central region of DANRE atg5.

**Dilution**

WB~~1:1000

**Format**

Purified polyclonal antibody supplied in PBS with 0.09% (W/V) sodium azide. This antibody is purified through a protein A column, followed by peptide affinity purification.

**Storage**

Maintain refrigerated at 2-8°C for up to 2 weeks. For long term storage store at -20°C in small aliquots to prevent freeze-thaw cycles.

**Precautions**

(DANRE) atg5 Antibody (Center) is for research use only and not for use in diagnostic or therapeutic procedures.

**(DANRE) atg5 Antibody (Center) - Protein Information**

**Name** Q6DEM4

**Function** Involved in autophagic vesicle formation. Conjugation with ATG12, through a ubiquitin-like conjugating system involving ATG7 as an E1-like activating enzyme and ATG10 as an E2-like conjugating enzyme, is essential for its function. The ATG12-ATG5 conjugate acts as an E3-like enzyme which is required for lipidation of ATG8 family proteins and their association to the vesicle membranes. Involved in mitochondrial quality control after oxidative damage, and in subsequent cellular longevity. Plays a critical role in multiple aspects of lymphocyte development and is essential for both B and T lymphocyte survival and proliferation. Required for optimal processing and presentation of antigens for MHC II. Involved in the maintenance of axon morphology and membrane structures, as well as in normal adipocyte differentiation. Promotes

primary ciliogenesis through removal of OFD1 from centriolar satellites and degradation of IFT20 via the autophagic pathway.

#### Cellular Location

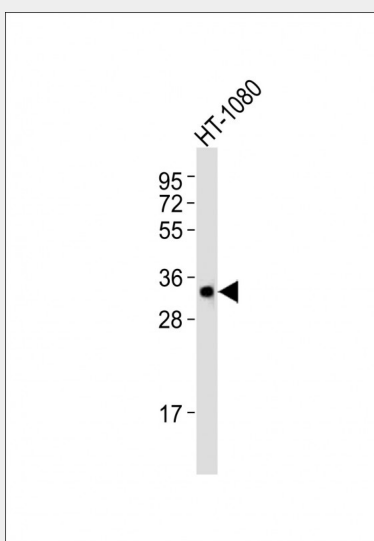
Preautophagosomal structure membrane {ECO:0000256|RuleBase:RU361202}; Peripheral membrane protein {ECO:0000256|RuleBase:RU361202}

#### (DANRE) atg5 Antibody (Center) - Protocols

Provided below are standard protocols that you may find useful for product applications.

- [Western Blot](#)
- [Blocking Peptides](#)
- [Dot Blot](#)
- [Immunohistochemistry](#)
- [Immunofluorescence](#)
- [Immunoprecipitation](#)
- [Flow Cytometry](#)
- [Cell Culture](#)

#### (DANRE) atg5 Antibody (Center) - Images



Anti-(DANRE) atg5 Antibody (Center) at 1:1000 dilution + HT-1080 whole cell lysates  
Lysates/proteins at 20 µg per lane. Secondary Goat Anti-Rabbit IgG, (H+L), Peroxidase conjugated  
at 1/10000 dilution Predicted band size : 32 kDa Blocking/Dilution buffer: 5% NFDM/TBST.