

**Mouse Gins1 Antibody (C-term)**  
**Purified Rabbit Polyclonal Antibody (Pab)**  
**Catalog # AP21172a**

**Specification**

---

**Mouse Gins1 Antibody (C-term) - Product Information**

Application	WB,E
Primary Accession	<a href="#">O9CZ15</a>
Reactivity	Mouse
Host	Rabbit
Clonality	polyclonal
Isotype	Rabbit IgG
Calculated MW	22893
Antigen Region	152-186

**Mouse Gins1 Antibody (C-term) - Additional Information**

**Gene ID** 69270

**Other Names**

DNA replication complex GINS protein PSF1, GINS complex subunit 1, Gins1, Psf1

**Target/Specificity**

This Mouse Gins1 antibody is generated from a rabbit immunized with a KLH conjugated synthetic peptide between 152-186 amino acids from the C-terminal region of Mouse Gins1.

**Dilution**

WB~~1:2000

**Format**

Purified polyclonal antibody supplied in PBS with 0.09% (W/V) sodium azide. This antibody is purified through a protein A column, followed by peptide affinity purification.

**Storage**

Maintain refrigerated at 2-8°C for up to 2 weeks. For long term storage store at -20°C in small aliquots to prevent freeze-thaw cycles.

**Precautions**

Mouse Gins1 Antibody (C-term) is for research use only and not for use in diagnostic or therapeutic procedures.

**Mouse Gins1 Antibody (C-term) - Protein Information**

**Name** Gins1

**Synonyms** Psf1

**Function** Required for correct functioning of the GINS complex, a complex that plays an essential

role in the initiation of DNA replication, and progression of DNA replication forks. GINS complex is a core component of CDC45-MCM-GINS (CMG) helicase, the molecular machine that unwinds template DNA during replication, and around which the replisome is built.

#### Cellular Location

Nucleus {ECO:0000250|UniProtKB:Q14691}. Chromosome {ECO:0000250|UniProtKB:Q14691}.

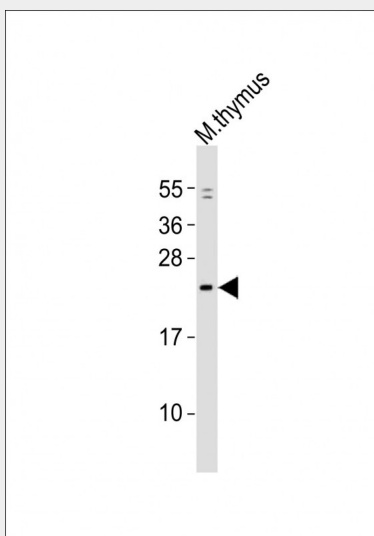
Note=Associates with chromatin. {ECO:0000250|UniProtKB:Q14691}

#### Mouse Gins1 Antibody (C-term) - Protocols

Provided below are standard protocols that you may find useful for product applications.

- [Western Blot](#)
- [Blocking Peptides](#)
- [Dot Blot](#)
- [Immunohistochemistry](#)
- [Immunofluorescence](#)
- [Immunoprecipitation](#)
- [Flow Cytometry](#)
- [Cell Culture](#)

#### Mouse Gins1 Antibody (C-term) - Images



Anti-Mouse Gins1 Antibody (C-term) at 1:2000 dilution + mouse thymus lysates Lysates/proteins at 20 µg per lane. Secondary Goat Anti-Rabbit IgG, (H+L), Peroxidase conjugated at 1/10000 dilution Predicted band size : 23 kDa Blocking/Dilution buffer: 5% NFDm/TBST.

#### Mouse Gins1 Antibody (C-term) - Background

The GINS complex plays an essential role in the initiation of DNA replication, and progression of DNA replication forks. GINS complex seems to bind preferentially to single- stranded DNA. GINS1 is essential for function (By similarity).

#### Mouse Gins1 Antibody (C-term) - References

Carninci P.,et al.Science 309:1559-1563(2005).