

**ASGR2 Antibody (N-term)**  
**Purified Rabbit Polyclonal Antibody (Pab)**  
**Catalog # AP21183a****Specification**

---

**ASGR2 Antibody (N-term) - Product Information**

Application	WB,E
Primary Accession	<a href="#">P07307</a>
Reactivity	Human
Host	Rabbit
Clonality	polyclonal
Isotype	Rabbit IgG
Calculated MW	35092

**ASGR2 Antibody (N-term) - Additional Information****Gene ID** 433**Other Names**

Asialoglycoprotein receptor 2, ASGP-R 2, ASGPR 2, C-type lectin domain family 4 member H2, Hepatic lectin H2, HL-2, ASGR2, CLEC4H2

**Target/Specificity**

This ASGR2 antibody is generated from a rabbit immunized with a KLH conjugated synthetic peptide between 21-54 amino acids from the N-terminal region of human ASGR2.

**Dilution**

WB~~1:1000

**Format**

Purified polyclonal antibody supplied in PBS with 0.09% (W/V) sodium azide. This antibody is purified through a protein A column, followed by peptide affinity purification.

**Storage**

Maintain refrigerated at 2-8°C for up to 2 weeks. For long term storage store at -20°C in small aliquots to prevent freeze-thaw cycles.

**Precautions**

ASGR2 Antibody (N-term) is for research use only and not for use in diagnostic or therapeutic procedures.

**ASGR2 Antibody (N-term) - Protein Information****Name** ASGR2**Synonyms** CLEC4H2**Function** Mediates the endocytosis of plasma glycoproteins to which the terminal sialic acid

residue on their complex carbohydrate moieties has been removed. The receptor recognizes terminal galactose and N- acetylgalactosamine units. After ligand binding to the receptor, the resulting complex is internalized and transported to a sorting organelle, where receptor and ligand are disassociated. The receptor then returns to the cell membrane surface.

**Cellular Location**

Membrane; Single-pass type II membrane protein.

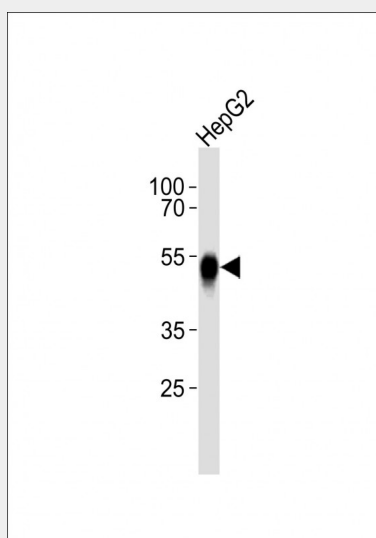
**Tissue Location**

Expressed exclusively in hepatic parenchymal cells.

**ASGR2 Antibody (N-term) - Protocols**

Provided below are standard protocols that you may find useful for product applications.

- [Western Blot](#)
- [Blocking Peptides](#)
- [Dot Blot](#)
- [Immunohistochemistry](#)
- [Immunofluorescence](#)
- [Immunoprecipitation](#)
- [Flow Cytometry](#)
- [Cell Culture](#)

**ASGR2 Antibody (N-term) - Images**

Anti-ASGR2 Antibody (N-term) at 1:1000 dilution + HepG2 whole cell lysates Lysates/proteins at 20 µg per lane. Secondary Goat Anti-Rabbit IgG, (H+L), Peroxidase conjugated at 1/10000 dilution Predicted band size : 35 kDa Blocking/Dilution buffer: 5% NFDm/TBST.

**ASGR2 Antibody (N-term) - Background**

Mediates the endocytosis of plasma glycoproteins to which the terminal sialic acid residue on their complex carbohydrate moieties has been removed. The receptor recognizes terminal galactose and N-acetylgalactosamine units. After ligand binding to the receptor, the resulting complex is internalized and transported to a sorting organelle, where receptor and ligand are disassociated. The receptor then returns to the cell membrane surface.

**ASGR2 Antibody (N-term) - References**

Spiess M.,et al.Proc. Natl. Acad. Sci. U.S.A. 82:6465-6469(1985).  
Paietta E.,et al.Hepatology 15:395-402(1992).  
Zody M.C.,et al.Nature 440:1045-1049(2006).  
Mural R.J.,et al.Submitted (SEP-2005) to the EMBL/GenBank/DDBJ databases.  
Pan H.,et al.Genomics 77:58-64(2001).