

AMPH Antibody (Center)
Purified Rabbit Polyclonal Antibody (Pab)
Catalog # AP21189c**Specification**

AMPH Antibody (Center) - Product Information

Application	WB, IHC-P,E
Primary Accession	P49418
Reactivity	Human
Host	Rabbit
Clonality	polyclonal
Isotype	Rabbit IgG
Calculated MW	76257

AMPH Antibody (Center) - Additional Information**Gene ID** 273**Other Names**

Amphiphysin, AMPH, AMPH1

Target/Specificity

This AMPH antibody is generated from a rabbit immunized with a KLH conjugated synthetic peptide between 336-370 amino acids from the Central region of human AMPH.

Dilution

WB~~1:1000

IHC-P~~1:25

Format

Purified polyclonal antibody supplied in PBS with 0.09% (W/V) sodium azide. This antibody is purified through a protein A column, followed by peptide affinity purification.

Storage

Maintain refrigerated at 2-8°C for up to 2 weeks. For long term storage store at -20°C in small aliquots to prevent freeze-thaw cycles.

Precautions

AMPH Antibody (Center) is for research use only and not for use in diagnostic or therapeutic procedures.

AMPH Antibody (Center) - Protein Information**Name** AMPH**Synonyms** AMPH1**Function** May participate in mechanisms of regulated exocytosis in synapses and certain

endocrine cell types. May control the properties of the membrane associated cytoskeleton.

Cellular Location

Cytoplasmic vesicle, secretory vesicle, synaptic vesicle membrane; Peripheral membrane protein; Cytoplasmic side Cytoplasm, cytoskeleton

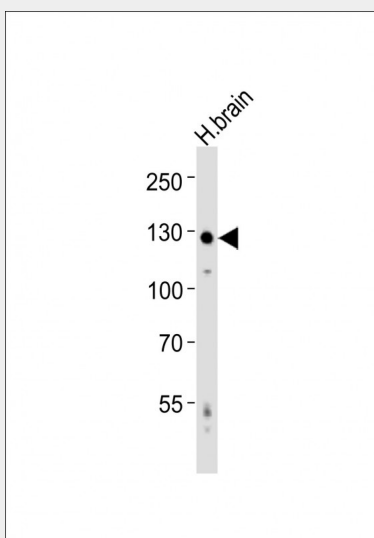
Tissue Location

Neurons, certain endocrine cell types and spermatocytes

AMPH Antibody (Center) - Protocols

Provided below are standard protocols that you may find useful for product applications.

- [Western Blot](#)
- [Blocking Peptides](#)
- [Dot Blot](#)
- [Immunohistochemistry](#)
- [Immunofluorescence](#)
- [Immunoprecipitation](#)
- [Flow Cytometry](#)
- [Cell Culture](#)

AMPH Antibody (Center) - Images

Anti-AMPH Antibody (Center) at 1:1000 dilution + human brain lysates Lysates/proteins at 20 µg per lane. Secondary Goat Anti-Rabbit IgG, (H+L), Peroxidase conjugated at 1/10000 dilution Predicted band size : 76 kDa Blocking/Dilution buffer: 5% NFDM/TBST.



AP21189c staining AMPH in Human brain tissue sections by Immunohistochemistry (IHC-P - paraformaldehyde-fixed, paraffin-embedded sections). Tissue was fixed with formaldehyde and blocked with 3% BSA for 0.5 hour at room temperature; antigen retrieval was by heat mediation with a citrate buffer (pH6). Samples were incubated with primary antibody (1/25) for 1 hour at 37°C. A undiluted biotinylated goat polyvalent antibody was used as the secondary antibody.

AMPH Antibody (Center) - Background

May participate in mechanisms of regulated exocytosis in synapses and certain endocrine cell types. May control the properties of the membrane associated cytoskeleton.

AMPH Antibody (Center) - References

David C., et al. FEBS Lett. 351:73-79(1994).
Yamamoto R., et al. Hum. Mol. Genet. 4:265-268(1995).
Floyd S.R., et al. Mol. Med. 4:29-39(1998).
Scherer S.W., et al. Science 300:767-772(2003).
Mural R.J., et al. Submitted (JUL-2005) to the EMBL/GenBank/DDBJ databases.