

UBE2G1 Antibody (N-term)
Purified Rabbit Polyclonal Antibody (Pab)
Catalog # AP2121a**Specification**

UBE2G1 Antibody (N-term) - Product Information

Application	WB, IHC-P,E
Primary Accession	P62253
Other Accession	P62255 , P62254 , Q4R5Y8 , NP_003333
Reactivity	Human, Mouse
Predicted	Monkey, Rat
Host	Rabbit
Clonality	Polyclonal
Isotype	Rabbit IgG
Calculated MW	19509
Antigen Region	1-30

UBE2G1 Antibody (N-term) - Additional Information**Gene ID** 7326**Other Names**

Ubiquitin-conjugating enzyme E2 G1, E217K, UBC7, Ubiquitin carrier protein G1, Ubiquitin-protein ligase G1, Ubiquitin-conjugating enzyme E2 G1, N-terminally processed, UBE2G1, UBE2G

Target/Specificity

This UBE2G1 antibody is generated from rabbits immunized with a KLH conjugated synthetic peptide between 1-30 amino acids from the N-terminal region of human UBE2G1.

Dilution

WB~~1:1000

IHC-P~~1:50~100

Format

Purified polyclonal antibody supplied in PBS with 0.09% (W/V) sodium azide. This antibody is prepared by Saturated Ammonium Sulfate (SAS) precipitation followed by dialysis against PBS.

Storage

Maintain refrigerated at 2-8°C for up to 2 weeks. For long term storage store at -20°C in small aliquots to prevent freeze-thaw cycles.

Precautions

UBE2G1 Antibody (N-term) is for research use only and not for use in diagnostic or therapeutic procedures.

UBE2G1 Antibody (N-term) - Protein Information**Name** UBE2G1

Synonyms UBE2G

Function Accepts ubiquitin from the E1 complex and catalyzes its covalent attachment to other proteins. In vitro catalyzes 'Lys-48'-, as well as 'Lys-63'-linked polyubiquitination. May be involved in degradation of muscle-specific proteins. Mediates polyubiquitination of CYP3A4.

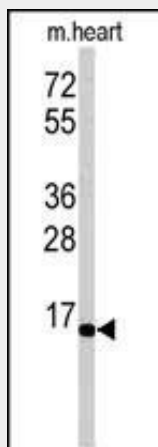
Tissue Location

Widely expressed, mainly in skeletal muscle.

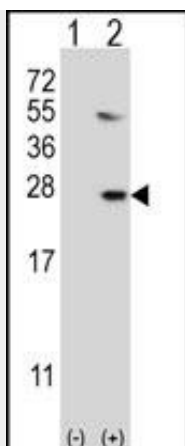
UBE2G1 Antibody (N-term) - Protocols

Provided below are standard protocols that you may find useful for product applications.

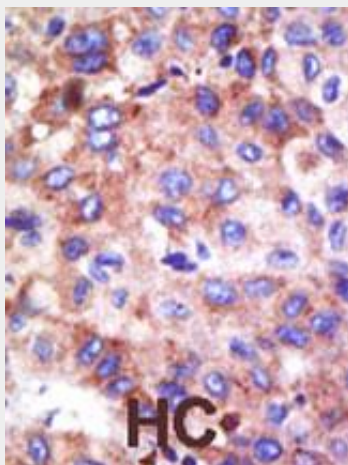
- [Western Blot](#)
- [Blocking Peptides](#)
- [Dot Blot](#)
- [Immunohistochemistry](#)
- [Immunofluorescence](#)
- [Immunoprecipitation](#)
- [Flow Cytometry](#)
- [Cell Culture](#)

UBE2G1 Antibody (N-term) - Images

Western blot analysis of anti-UBE2G1 Antibody (N-term) (Cat.#AP2121a) in mouse heart tissue lysates (35ug/lane). UBE2G1 (arrow) was detected using the purified Pab.



Western blot analysis of UBE2G1 (arrow) using rabbit polyclonal UBE2G1 Antibody (R11) (Cat.#AP2121a). 293 cell lysates (2 ug/lane) either nontransfected (Lane 1) or transiently transfected (Lane 2) with the UBE2G1 gene.



Formalin-fixed and paraffin-embedded human cancer tissue reacted with the primary antibody, which was peroxidase-conjugated to the secondary antibody, followed by DAB staining. This data demonstrates the use of this antibody for immunohistochemistry; clinical relevance has not been evaluated. BC = breast carcinoma; HC = hepatocarcinoma.

UBE2G1 Antibody (N-term) - Background

The modification of proteins with ubiquitin is an important cellular mechanism for targeting abnormal or short-lived proteins for degradation. Ubiquitination involves at least three classes of enzymes: ubiquitin-activating enzymes, or E1s, ubiquitin-conjugating enzymes, or E2s, and ubiquitin-protein ligases, or E3s. UBE2G1 is a member of the E2 ubiquitin-conjugating enzyme family. The encoded protein shares 98-100% sequence identity with the zebrafish, frog, rat and mouse counterparts, which indicates that this enzyme is highly conserved in eukaryotes.

UBE2G1 Antibody (N-term) - References

Watanabe, T.K., et al., Cytogenet. Cell Genet. 74 (1-2), 146-148 (1996).