

**IL24 Antibody**  
**Purified Rabbit Polyclonal Antibody (Pab)**  
**Catalog # AP21241a****Specification**

---

**IL24 Antibody - Product Information**

Application	WB, IHC-P, FC,E
Primary Accession	<a href="#">Q13007</a>
Reactivity	Human
Host	Rabbit
Clonality	polyclonal
Isotype	Rabbit IgG
Calculated MW	23825

**IL24 Antibody - Additional Information****Gene ID** 11009**Other Names**

Interleukin-24, IL-24, Melanoma differentiation-associated gene 7 protein, MDA-7, Suppression of tumorigenicity 16 protein, IL24, MDA7, ST16

**Target/Specificity**

This IL24 antibody is generated from a rabbit immunized with a recombinant protein.

**Dilution**

WB~~1:2000

IHC-P~~1:25

FC~~1:25

**Format**

Purified polyclonal antibody supplied in PBS with 0.09% (W/V) sodium azide. This antibody is purified through a protein A column, followed by peptide affinity purification.

**Storage**

Maintain refrigerated at 2-8°C for up to 2 weeks. For long term storage store at -20°C in small aliquots to prevent freeze-thaw cycles.

**Precautions**

IL24 Antibody is for research use only and not for use in diagnostic or therapeutic procedures.

**IL24 Antibody - Protein Information****Name** IL24**Synonyms** MDA7, ST16**Function** Multifunctional cytokine mainly produced by T-cells that plays a regulatory role in

immune response, tissue homeostasis, host defense, and oncogenesis (PubMed:[25168428](#), PubMed:[27687232](#)). Possesses antiviral functions and induces the type I interferon response during influenza infection (PubMed:[27687232](#)). Signals through two receptor complexes IL20RA/IL20RB or IL20RB/IL22RA1 (PubMed:[11706020](#), PubMed:[30111632](#)). In turn, stimulates the JAK1-STAT3 and MAPK pathways and promotes the secretion of pro-inflammatory mediators including IL8 and MMP1 (PubMed:[25168428](#)). Intracellularly, maintains endoplasmic reticulum homeostasis by restricting the eIF2alpha-CHOP pathway- mediated stress signal (By similarity). In addition, acts as a quality control mechanism for the ubiquitin proteasome system by alerting the cell to proteasome dysfunction through activation of PKR/EIF2AK2 (By similarity).

#### Cellular Location

Secreted.

#### Tissue Location

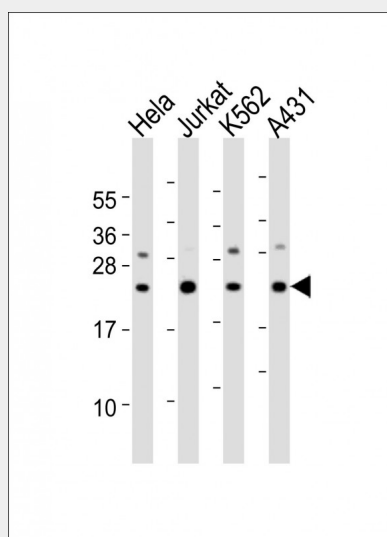
Up-regulated in melanoma cells induced to terminally differentiate

### IL24 Antibody - Protocols

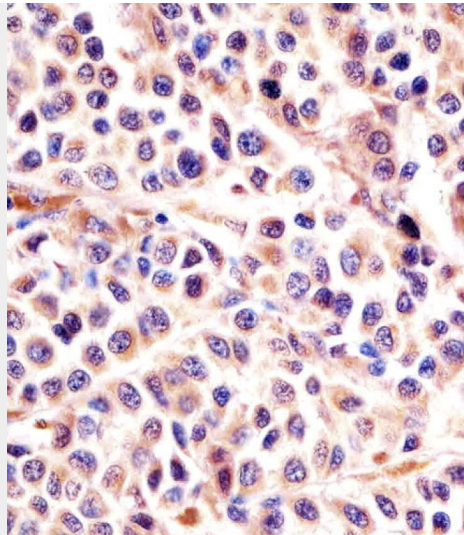
Provided below are standard protocols that you may find useful for product applications.

- [Western Blot](#)
- [Blocking Peptides](#)
- [Dot Blot](#)
- [Immunohistochemistry](#)
- [Immunofluorescence](#)
- [Immunoprecipitation](#)
- [Flow Cytometry](#)
- [Cell Culture](#)

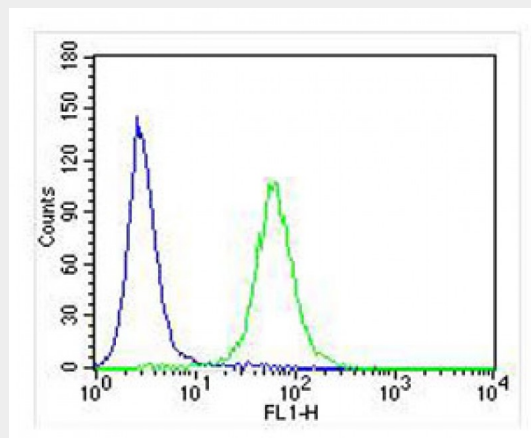
### IL24 Antibody - Images



All lanes : Anti-IL24 Antibody at 1:2000 dilution Lane 1: HeLa whole cell lysates Lane 2: Jurkat whole cell lysates Lane 3: K562 whole cell lysates Lane 4: A431 whole cell lysates Lysates/proteins at 20 µg per lane. Secondary Goat Anti-Rabbit IgG, (H+L), Peroxidase conjugated at 1/10000 dilution Predicted band size : 24 kDa Blocking/Dilution buffer: 5% NFD/MTBST.



AP21241a staining IL24 in human melanoma sections by Immunohistochemistry (IHC-P - paraformaldehyde-fixed, paraffin-embedded sections). Tissue was fixed with formaldehyde and blocked with 3% BSA for 0.5 hour at room temperature; antigen retrieval was by heat mediation with a citrate buffer (pH6). Samples were incubated with primary antibody (1/25) for 1 hour at 37°C. A undiluted biotinylated goat polyvalent antibody was used as the secondary antibody.



Overlay histogram showing U-2 OS cells stained with AP21241a (green line). The cells were fixed with 2% paraformaldehyde (10 min) and then permeabilized with 90% methanol for 10 min. The cells were then incubated in 2% bovine serum albumin to block non-specific protein-protein interactions followed by the antibody (AP21241a, 1:25 dilution) for 60 min at 37°C. The secondary antibody used was Alexa Fluor® 488 goat anti-rabbit IgG (H+L) (1583138) at 1/400 dilution for 40 min at 37°C. Isotype control antibody (blue line) was rabbit IgG1 (1µg/1x10<sup>6</sup> cells) used under the same conditions. Acquisition of >10,000 events was performed.

### IL24 Antibody - Background

Has antiproliferative properties on melanoma cells and may contribute to terminal cell differentiation.

### IL24 Antibody - References

- Jiang H., et al. Oncogene 11:2477-2486(1995).
- Peat J., et al. Submitted (JUN-2000) to the EMBL/GenBank/DDBJ databases.
- Huang E.Y., et al. Oncogene 20:7051-7063(2001).
- Allen M., et al. J. Invest. Dermatol. 123:583-588(2004).

Allen M.,et al.Int. J. Immunogenet. 32:375-378(2005).