

SHH Antibody (C-term)
Purified Rabbit Polyclonal Antibody (Pab)
Catalog # AP21273b**Specification**

SHH Antibody (C-term) - Product Information

Application	WB,E
Primary Accession	Q15465
Reactivity	Mouse
Host	Rabbit
Clonality	polyclonal
Isotype	Rabbit IgG
Calculated MW	49607

SHH Antibody (C-term) - Additional Information**Gene ID** 6469**Other Names**

Sonic hedgehog protein, SHH, HHG-1, Sonic hedgehog protein N-product, Sonic hedgehog protein C-product, SHH

Target/Specificity

This SHH antibody is generated from a rabbit immunized with a KLH conjugated synthetic peptide between 368-401 amino acids from the C-terminal region of human SHH.

Dilution

WB~~1:1000

Format

Purified polyclonal antibody supplied in PBS with 0.09% (W/V) sodium azide. This antibody is purified through a protein A column, followed by peptide affinity purification.

Storage

Maintain refrigerated at 2-8°C for up to 2 weeks. For long term storage store at -20°C in small aliquots to prevent freeze-thaw cycles.

Precautions

SHH Antibody (C-term) is for research use only and not for use in diagnostic or therapeutic procedures.

SHH Antibody (C-term) - Protein Information**Name** SHH ([HGNC:10848](#))

Function [Sonic hedgehog protein]: The C-terminal part of the sonic hedgehog protein precursor displays an autoproteolysis and a cholesterol transferase activity (By similarity). Both activities result in the cleavage of the full-length protein into two parts (ShhN and ShhC) followed by the

covalent attachment of a cholesterol moiety to the C-terminal of the newly generated ShhN (By similarity). Both activities occur in the reticulum endoplasmic (By similarity). Once cleaved, ShhC is degraded in the endoplasmic reticulum (By similarity).

Cellular Location

[Sonic hedgehog protein]: Endoplasmic reticulum membrane. Golgi apparatus membrane.

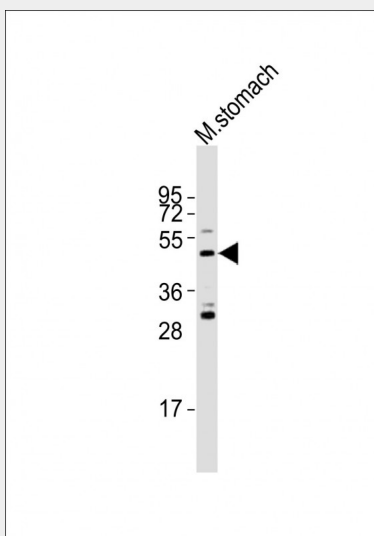
Secreted Note=Co-localizes with HHAT in the ER and Golgi membrane

SHH Antibody (C-term) - Protocols

Provided below are standard protocols that you may find useful for product applications.

- [Western Blot](#)
- [Blocking Peptides](#)
- [Dot Blot](#)
- [Immunohistochemistry](#)
- [Immunofluorescence](#)
- [Immunoprecipitation](#)
- [Flow Cytometry](#)
- [Cell Culture](#)

SHH Antibody (C-term) - Images



Anti-SHH Antibody (C-term) at 1:1000 dilution + mouse stomach lysates. Lysates/proteins at 20 µg per lane. Secondary Goat Anti-Rabbit IgG, (H+L), Peroxidase conjugated at 1/10000 dilution. Predicted band size : 50 kDa. Blocking/Dilution buffer: 5% NFDM/TBST.

SHH Antibody (C-term) - Background

Intercellular signal essential for a variety of patterning events during development: signal produced by the notochord that induces ventral cell fate in the neural tube and somites, and the polarizing signal for patterning of the anterior-posterior axis of the developing limb bud. Displays both floor plate- and motor neuron-inducing activity. The threshold concentration of N-product required for motor neuron induction is 5-fold lower than that required for floor plate induction. Activates the transcription of target genes by interacting with its receptor PTCH1 to prevent normal inhibition by PTCH1 on the constitutive signaling activity of SMO (By similarity).

SHH Antibody (C-term) - References

- Marigo V.,et al.Genomics 28:44-51(1995).
Tate G.,et al.J. Biochem. Mol. Biol. Biophys. 4:27-34(2000).
Hillier L.W.,et al.Nature 424:157-164(2003).
Scherer S.W.,et al.Science 300:767-772(2003).
Pepinsky R.B.,et al.J. Biol. Chem. 273:14037-14045(1998).