

MLF1 Antibody (C-term)
Purified Rabbit Polyclonal Antibody (Pab)
Catalog # AP21309b**Specification**

MLF1 Antibody (C-term) - Product Information

Application	WB,E
Primary Accession	P58340
Reactivity	Human
Host	Rabbit
Clonality	polyclonal
Isotype	Rabbit IgG
Calculated MW	30627

MLF1 Antibody (C-term) - Additional Information**Gene ID** 4291**Other Names**

Myeloid leukemia factor 1, Myelodysplasia-myeloid leukemia factor 1, MLF1

Target/Specificity

This MLF1 antibody is generated from a rabbit immunized with a KLH conjugated synthetic peptide between 232-266 amino acids from the C-terminal region of human MLF1.

Dilution

WB~~1:2000

Format

Purified polyclonal antibody supplied in PBS with 0.09% (W/V) sodium azide. This antibody is purified through a protein A column, followed by peptide affinity purification.

Storage

Maintain refrigerated at 2-8°C for up to 2 weeks. For long term storage store at -20°C in small aliquots to prevent freeze-thaw cycles.

Precautions

MLF1 Antibody (C-term) is for research use only and not for use in diagnostic or therapeutic procedures.

MLF1 Antibody (C-term) - Protein Information**Name** MLF1

Function Involved in lineage commitment of primary hemopoietic progenitors by restricting erythroid formation and enhancing myeloid formation. Interferes with erythropoietin-induced erythroid terminal differentiation by preventing cells from exiting the cell cycle through suppression of CDKN1B/p27Kip1 levels. Suppresses COP1 activity via CSN3 which activates p53

and induces cell cycle arrest. Binds DNA and affects the expression of a number of genes so may function as a transcription factor in the nucleus.

Cellular Location

Cytoplasm {ECO:0000250|UniProtKB:Q9QWV4}. Nucleus {ECO:0000250|UniProtKB:Q9QWV4}. Cell projection, cilium {ECO:0000250|UniProtKB:Q9QWV4}. Cytoplasm, cytoskeleton, cilium basal body {ECO:0000250|UniProtKB:Q9QWV4}. Note=Shuttles between the cytoplasm and nucleus. {ECO:0000250|UniProtKB:Q9QWV4}

Tissue Location

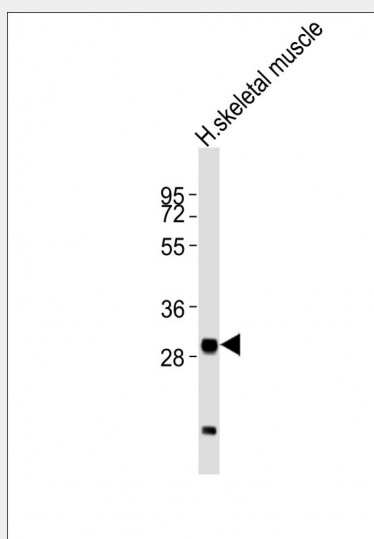
Most abundant in testis, ovary, skeletal muscle, heart, kidney and colon. Low expression in spleen, thymus and peripheral blood leukocytes

MLF1 Antibody (C-term) - Protocols

Provided below are standard protocols that you may find useful for product applications.

- [Western Blot](#)
- [Blocking Peptides](#)
- [Dot Blot](#)
- [Immunohistochemistry](#)
- [Immunofluorescence](#)
- [Immunoprecipitation](#)
- [Flow Cytometry](#)
- [Cell Culture](#)

MLF1 Antibody (C-term) - Images



Anti-MLF1 Antibody (C-term) at 1:2000 dilution + human skeletal muscle lysates. Lysates/proteins at 20 µg per lane. Secondary Goat Anti-Rabbit IgG, (H+L), Peroxidase conjugated at 1/10000 dilution. Predicted band size : 31 kDa. Blocking/Dilution buffer: 5% NFD/MTBST.

MLF1 Antibody (C-term) - Background

Involved in lineage commitment of primary hemopoietic progenitors by restricting erythroid formation and enhancing myeloid formation. Interferes with erythropoietin-induced erythroid terminal differentiation by preventing cells from exiting the cell cycle through suppression of

CDKN1B/p27Kip1 levels. Suppresses RFWD2/COP1 activity via CSN3 which activates p53 and induces cell cycle arrest. Binds DNA and affects the expression of a number of genes so may function as a transcription factor in the nucleus.

MLF1 Antibody (C-term) - References

Yoneda-Kato N.,et al.Oncogene 12:265-275(1996).
Feng X.,et al.Submitted (DEC-2004) to the EMBL/GenBank/DDBJ databases.
Ota T.,et al.Nat. Genet. 36:40-45(2004).
Muzny D.M.,et al.Nature 440:1194-1198(2006).
Mural R.J.,et al.Submitted (SEP-2005) to the EMBL/GenBank/DDBJ databases.