

**NLGN3 Antibody (C-term)**  
**Purified Rabbit Polyclonal Antibody (Pab)**  
**Catalog # AP21311b****Specification**

---

**NLGN3 Antibody (C-term) - Product Information**

Application	WB,E
Primary Accession	<a href="#">O9NZ94</a>
Reactivity	Mouse, Rat
Host	Rabbit
Clonality	polyclonal
Isotype	Rabbit IgG
Calculated MW	93895

**NLGN3 Antibody (C-term) - Additional Information****Gene ID** 54413**Other Names**

Neurologin-3, Gliotactin homolog, NLGN3, KIAA1480, NL3

**Target/Specificity**

This NLGN3 antibody is generated from a rabbit immunized with a KLH conjugated synthetic peptide between 651-685 amino acids from the C-terminal region of human NLGN3.

**Dilution**

WB~~1:1000

**Format**

Purified polyclonal antibody supplied in PBS with 0.09% (W/V) sodium azide. This antibody is purified through a protein A column, followed by peptide affinity purification.

**Storage**

Maintain refrigerated at 2-8°C for up to 2 weeks. For long term storage store at -20°C in small aliquots to prevent freeze-thaw cycles.

**Precautions**

NLGN3 Antibody (C-term) is for research use only and not for use in diagnostic or therapeutic procedures.

**NLGN3 Antibody (C-term) - Protein Information****Name** NLGN3**Synonyms** KIAA1480, NL3

**Function** Cell surface protein involved in cell-cell-interactions via its interactions with neurexin family members. Plays a role in synapse function and synaptic signal transmission, and may

mediate its effects by clustering other synaptic proteins. May promote the initial formation of synapses, but is not essential for this. May also play a role in glia-glia or glia-neuron interactions in the developing peripheral nervous system (By similarity).

#### **Cellular Location**

Cell membrane; Single-pass type I membrane protein. Synapse. Note=Detected at both glutamatergic and GABAergic synapses.

#### **Tissue Location**

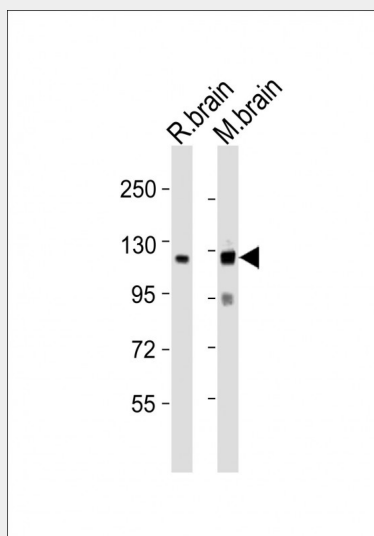
Expressed in the blood vessel walls (at protein level). Detected in throughout the brain and in spinal cord. Detected in brain, and at lower levels in pancreas islet beta cells

### **NLGN3 Antibody (C-term) - Protocols**

Provided below are standard protocols that you may find useful for product applications.

- [Western Blot](#)
- [Blocking Peptides](#)
- [Dot Blot](#)
- [Immunohistochemistry](#)
- [Immunofluorescence](#)
- [Immunoprecipitation](#)
- [Flow Cytometry](#)
- [Cell Culture](#)

### **NLGN3 Antibody (C-term) - Images**



All lanes : Anti-NLGN3 Antibody (C-term) at 1:1000 dilution Lane 1: rat brain lysates Lane 2: mouse brain lysates Lysates/proteins at 20 µg per lane. Secondary Goat Anti-Rabbit IgG, (H+L), Peroxidase conjugated at 1/10000 dilution Predicted band size : 94 kDa Blocking/Dilution buffer: 5% NFD/MTBST.

### **NLGN3 Antibody (C-term) - Background**

Cell surface protein involved in cell-cell-interactions via its interactions with neuroligin family members. Plays a role in synapse function and synaptic signal transmission, and may mediate its effects by clustering other synaptic proteins. May promote the initial formation of synapses, but is

not essential for this. May also play a role in glia-glia or glia-neuron interactions in the developing peripheral nervous system (By similarity).

#### **NLGN3 Antibody (C-term) - References**

Philibert R.A.,et al.Gene 246:303-310(2000).

Rissone A.,et al.Dev. Dyn. 239:688-702(2010).

Ota T.,et al.Nat. Genet. 36:40-45(2004).

Ross M.T.,et al.Nature 434:325-337(2005).

Mural R.J.,et al.Submitted (SEP-2005) to the EMBL/GenBank/DDBJ databases.