

**RPS6KA4 Antibody (C-term)**  
**Purified Rabbit Polyclonal Antibody (Pab)**  
**Catalog # AP21318b****Specification**

---

**RPS6KA4 Antibody (C-term) - Product Information**

Application	WB,E
Primary Accession	<a href="#">O75676</a>
Reactivity	Human
Host	Rabbit
Clonality	polyclonal
Isotype	Rabbit IgG
Calculated MW	85606

**RPS6KA4 Antibody (C-term) - Additional Information****Gene ID** 8986**Other Names**

Ribosomal protein S6 kinase alpha-4, S6K-alpha-4, 90 kDa ribosomal protein S6 kinase 4, Nuclear mitogen- and stress-activated protein kinase 2, Ribosomal protein kinase B, RSKB, RPS6KA4, MSK2

**Target/Specificity**

This RPS6KA4 antibody is generated from a rabbit immunized with a KLH conjugated synthetic peptide between 692-725 amino acids from the C-terminal region of human RPS6KA4.

**Dilution**

WB~~1:2000

**Format**

Purified polyclonal antibody supplied in PBS with 0.09% (W/V) sodium azide. This antibody is purified through a protein A column, followed by peptide affinity purification.

**Storage**

Maintain refrigerated at 2-8°C for up to 2 weeks. For long term storage store at -20°C in small aliquots to prevent freeze-thaw cycles.

**Precautions**

RPS6KA4 Antibody (C-term) is for research use only and not for use in diagnostic or therapeutic procedures.

**RPS6KA4 Antibody (C-term) - Protein Information****Name** RPS6KA4**Synonyms** MSK2**Function** Serine/threonine-protein kinase that is required for the mitogen or stress-induced

phosphorylation of the transcription factors CREB1 and ATF1 and for the regulation of the transcription factor RELA, and that contributes to gene activation by histone phosphorylation and functions in the regulation of inflammatory genes. Phosphorylates CREB1 and ATF1 in response to mitogenic or stress stimuli such as UV-C irradiation, epidermal growth factor (EGF) and anisomycin. Plays an essential role in the control of RELA transcriptional activity in response to TNF. Phosphorylates 'Ser-10' of histone H3 in response to mitogenics, stress stimuli and EGF, which results in the transcriptional activation of several immediate early genes, including proto-oncogenes c-fos/FOS and c-jun/JUN. May also phosphorylate 'Ser- 28' of histone H3. Mediates the mitogen- and stress-induced phosphorylation of high mobility group protein 1 (HMG1/HMG14). In lipopolysaccharide-stimulated primary macrophages, acts downstream of the Toll-like receptor TLR4 to limit the production of pro-inflammatory cytokines. Functions probably by inducing transcription of the MAP kinase phosphatase DUSP1 and the anti-inflammatory cytokine interleukin 10 (IL10), via CREB1 and ATF1 transcription factors.

### Cellular Location

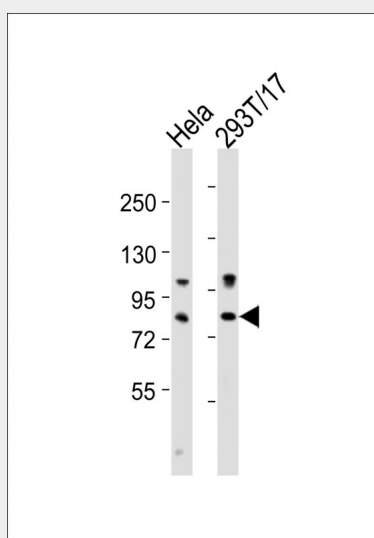
Nucleus

### RPS6KA4 Antibody (C-term) - Protocols

Provided below are standard protocols that you may find useful for product applications.

- [Western Blot](#)
- [Blocking Peptides](#)
- [Dot Blot](#)
- [Immunohistochemistry](#)
- [Immunofluorescence](#)
- [Immunoprecipitation](#)
- [Flow Cytometry](#)
- [Cell Culture](#)

### RPS6KA4 Antibody (C-term) - Images



All lanes : Anti-RPS6KA4 Antibody (C-term) at 1:2000 dilution Lane 1: HeLa whole cell lysates Lane 2: 293T/17 whole cell lysates Lysates/proteins at 20 µg per lane. Secondary Goat Anti-Rabbit IgG, (H+L), Peroxidase conjugated at 1/10000 dilution Predicted band size : 86 kDa Blocking/Dilution buffer: 5% NFDM/TBST.

**RPS6KA4 Antibody (C-term) - Background**

Serine/threonine-protein kinase that is required for the mitogen or stress-induced phosphorylation of the transcription factors CREB1 and ATF1 and for the regulation of the transcription factor RELA, and that contributes to gene activation by histone phosphorylation and functions in the regulation of inflammatory genes. Phosphorylates CREB1 and ATF1 in response to mitogenic or stress stimuli such as UV-C irradiation, epidermal growth factor (EGF) and anisomycin. Plays an essential role in the control of RELA transcriptional activity in response to TNF. Phosphorylates 'Ser-10' of histone H3 in response to mitogenics, stress stimuli and EGF, which results in the transcriptional activation of several immediate early genes, including proto-oncogenes c-fos/FOS and c-jun/JUN. May also phosphorylate 'Ser-28' of histone H3. Mediates the mitogen- and stress-induced phosphorylation of high mobility group protein 1 (HMGN1/HMG14). In lipopolysaccharide- stimulated primary macrophages, acts downstream of the Toll-like receptor TLR4 to limit the production of pro-inflammatory cytokines. Functions probably by inducing transcription of the MAP kinase phosphatase DUSP1 and the anti-inflammatory cytokine interleukin 10 (IL10), via CREB1 and ATF1 transcription factors.

**RPS6KA4 Antibody (C-term) - References**

Pierrat B.,et al.J. Biol. Chem. 273:29661-29671(1998).  
Ota T.,et al.Nat. Genet. 36:40-45(2004).  
Totoki Y.,et al.Submitted (MAR-2005) to the EMBL/GenBank/DDBJ databases.  
Mural R.J.,et al.Submitted (JUL-2005) to the EMBL/GenBank/DDBJ databases.  
Deak M.,et al.EMBO J. 17:4426-4441(1998).