

(DANRE) atg5 Antibody (Center)
Purified Rabbit Polyclonal Antibody (Pab)
Catalog # AP21388c

Specification

(DANRE) atg5 Antibody (Center) - Product Information

Application	WB,E
Primary Accession	Q6DEM4
Reactivity	Mouse
Host	Rabbit
Clonality	polyclonal
Isotype	Rabbit IgG
Calculated MW	31872

(DANRE) atg5 Antibody (Center) - Additional Information

Other Names

Autophagy protein 5 , Q6DEM4

Target/Specificity

This DANRE atg5 antibody is generated from a rabbit immunized with a KLH conjugated synthetic peptide between 167-199 amino acids from the Central region of DANRE atg5.

Dilution

WB~~1:4000

Format

Purified polyclonal antibody supplied in PBS with 0.09% (W/V) sodium azide. This antibody is purified through a protein A column, followed by peptide affinity purification.

Storage

Maintain refrigerated at 2-8°C for up to 2 weeks. For long term storage store at -20°C in small aliquots to prevent freeze-thaw cycles.

Precautions

(DANRE) atg5 Antibody (Center) is for research use only and not for use in diagnostic or therapeutic procedures.

(DANRE) atg5 Antibody (Center) - Protein Information

Name Q6DEM4

Function Involved in autophagic vesicle formation. Conjugation with ATG12, through a ubiquitin-like conjugating system involving ATG7 as an E1-like activating enzyme and ATG10 as an E2-like conjugating enzyme, is essential for its function. The ATG12-ATG5 conjugate acts as an E3-like enzyme which is required for lipidation of ATG8 family proteins and their association to the vesicle membranes. Involved in mitochondrial quality control after oxidative damage, and in subsequent cellular longevity. Plays a critical role in multiple aspects of lymphocyte development

and is essential for both B and T lymphocyte survival and proliferation. Required for optimal processing and presentation of antigens for MHC II. Involved in the maintenance of axon morphology and membrane structures, as well as in normal adipocyte differentiation. Promotes primary ciliogenesis through removal of OFD1 from centriolar satellites and degradation of IFT20 via the autophagic pathway.

Cellular Location

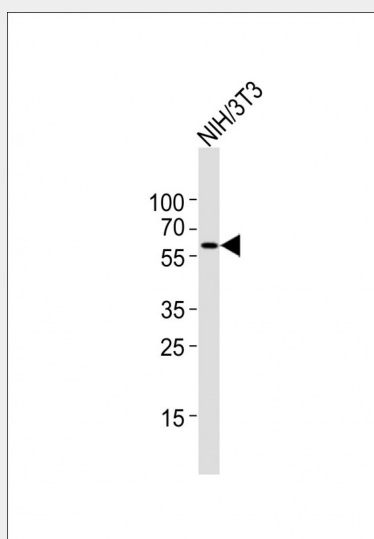
Preautophagosomal structure membrane {ECO:0000256|RuleBase:RU361202}; Peripheral membrane protein {ECO:0000256|RuleBase:RU361202}

(DANRE) atg5 Antibody (Center) - Protocols

Provided below are standard protocols that you may find useful for product applications.

- [Western Blot](#)
- [Blocking Peptides](#)
- [Dot Blot](#)
- [Immunohistochemistry](#)
- [Immunofluorescence](#)
- [Immunoprecipitation](#)
- [Flow Cytometry](#)
- [Cell Culture](#)

(DANRE) atg5 Antibody (Center) - Images



Anti-atg5 Antibody (Center) at 1:4000 dilution + NIH/3T3 whole cell lysates. Lysates/proteins at 20 µg per lane. Secondary Goat Anti-Rabbit IgG, (H+L), Peroxidase conjugated at 1/10000 dilution. Predicted band size : 32 kDa. Blocking/Dilution buffer: 5% NFDM/TBST.

(DANRE) atg5 Antibody (Center) - Background

Involved in autophagic vesicle formation.