

**PRKAR2A Antibody (C-Term)**  
**Purified Rabbit Polyclonal Antibody (Pab)**  
**Catalog # AP21402b**

**Specification**

---

**PRKAR2A Antibody (C-Term) - Product Information**

Application	WB,E
Primary Accession	<a href="#">P13861</a>
Reactivity	Human
Host	Rabbit
Clonality	polyclonal
Isotype	Rabbit IgG
Calculated MW	45518

**PRKAR2A Antibody (C-Term) - Additional Information**

**Gene ID** 5576

**Other Names**

cAMP-dependent protein kinase type II-alpha regulatory subunit, PRKAR2A, PKR2, PRKAR2

**Target/Specificity**

This PRKAR2A antibody is generated from a rabbit immunized with a KLH conjugated synthetic peptide between 312-346 amino acids from the human region of human PRKAR2A.

**Dilution**

WB~~1:2000

**Format**

Purified polyclonal antibody supplied in PBS with 0.09% (W/V) sodium azide. This antibody is purified through a protein A column, followed by peptide affinity purification.

**Storage**

Maintain refrigerated at 2-8°C for up to 2 weeks. For long term storage store at -20°C in small aliquots to prevent freeze-thaw cycles.

**Precautions**

PRKAR2A Antibody (C-Term) is for research use only and not for use in diagnostic or therapeutic procedures.

**PRKAR2A Antibody (C-Term) - Protein Information**

**Name** PRKAR2A

**Synonyms** PKR2, PRKAR2

**Function** Regulatory subunit of the cAMP-dependent protein kinases involved in cAMP signaling in cells. Type II regulatory chains mediate membrane association by binding to anchoring proteins,

including the MAP2 kinase.

#### **Cellular Location**

Cytoplasm. Cell membrane. Note=Colocalizes with PJA2 in the cytoplasm and the cell membrane

#### **Tissue Location**

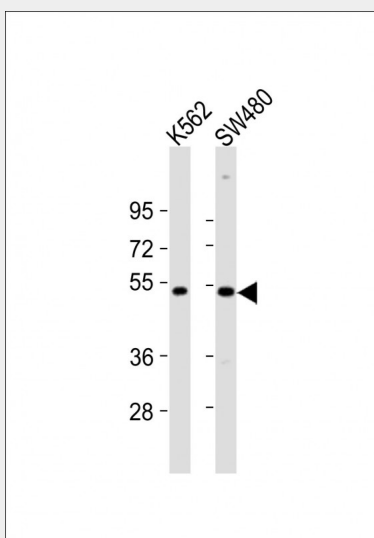
Four types of regulatory chains are found: I-alpha, I-beta, II-alpha, and II-beta. Their expression varies among tissues and is in some cases constitutive and in others inducible

### **PRKAR2A Antibody (C-Term) - Protocols**

Provided below are standard protocols that you may find useful for product applications.

- [Western Blot](#)
- [Blocking Peptides](#)
- [Dot Blot](#)
- [Immunohistochemistry](#)
- [Immunofluorescence](#)
- [Immunoprecipitation](#)
- [Flow Cytometry](#)
- [Cell Culture](#)

### **PRKAR2A Antibody (C-Term) - Images**



All lanes : Anti-PRKAR2A Antibody (C-Term) at 1:2000 dilution Lane 1: K562 whole cell lysates Lane 2: SW480 whole cell lysates Lysates/proteins at 20 µg per lane. Secondary Goat Anti-Rabbit IgG, (H+L), Peroxidase conjugated at 1/10000 dilution Predicted band size : 46 kDa Blocking/Dilution buffer: 5% NFDM/TBST.

### **PRKAR2A Antibody (C-Term) - Background**

Regulatory subunit of the cAMP-dependent protein kinases involved in cAMP signaling in cells. Type II regulatory chains mediate membrane association by binding to anchoring proteins, including the MAP2 kinase.

### **PRKAR2A Antibody (C-Term) - References**

Oyen O.,et al.FEBS Lett. 246:57-64(1989).  
Kalnine N.,et al.Submitted (MAY-2003) to the EMBL/GenBank/DDBJ databases.  
Muzny D.M.,et al.Nature 440:1194-1198(2006).  
Mural R.J.,et al.Submitted (JUL-2005) to the EMBL/GenBank/DDBJ databases.  
Foss K.B.,et al.Biochim. Biophys. Acta 1350:98-108(1997).