

VANGL2 Antibody (C-Term)
Purified Rabbit Polyclonal Antibody (Pab)
Catalog # AP21414b**Specification**

VANGL2 Antibody (C-Term) - Product Information

Application	WB,E
Primary Accession	Q9ULK5
Reactivity	Human
Host	Rabbit
Clonality	polyclonal
Isotype	Rabbit IgG
Calculated MW	59714

VANGL2 Antibody (C-Term) - Additional Information**Gene ID** 57216**Other Names**

Vang-like protein 2, Loop-tail protein 1 homolog, Strabismus 1, Van Gogh-like protein 2, VANGL2, KIAA1215, STB1

Target/Specificity

This VANGL2 antibody is generated from a rabbit immunized with a KLH conjugated synthetic peptide between 376-410 amino acids from human VANGL2.

Dilution

WB~~1:2000

Format

Purified polyclonal antibody supplied in PBS with 0.09% (W/V) sodium azide. This antibody is purified through a protein A column, followed by peptide affinity purification.

Storage

Maintain refrigerated at 2-8°C for up to 2 weeks. For long term storage store at -20°C in small aliquots to prevent freeze-thaw cycles.

Precautions

VANGL2 Antibody (C-Term) is for research use only and not for use in diagnostic or therapeutic procedures.

VANGL2 Antibody (C-Term) - Protein Information**Name** VANGL2**Synonyms** KIAA1215, STB1**Function** Involved in the control of early morphogenesis and patterning of both axial midline

structures and the development of neural plate. Plays a role in the regulation of planar cell polarity, particularly in the orientation of stereociliary bundles in the cochlea. Required for polarization and movement of myocardializing cells in the outflow tract and seems to act via RHOA signaling to regulate this process. Required for cell surface localization of FZD3 and FZD6 in the inner ear (By similarity).

Cellular Location

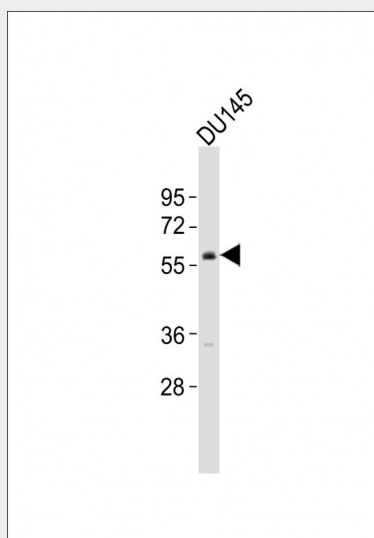
Cell membrane; Multi-pass membrane protein

VANGL2 Antibody (C-Term) - Protocols

Provided below are standard protocols that you may find useful for product applications.

- [Western Blot](#)
- [Blocking Peptides](#)
- [Dot Blot](#)
- [Immunohistochemistry](#)
- [Immunofluorescence](#)
- [Immunoprecipitation](#)
- [Flow Cytometry](#)
- [Cell Culture](#)

VANGL2 Antibody (C-Term) - Images



Anti-VANGL2 Antibody (C-Term) at 1:2000 dilution + DU145 whole cell lysates. Lysates/proteins at 20 µg per lane. Secondary Goat Anti-Rabbit IgG, (H+L), Peroxidase conjugated at 1/10000 dilution. Predicted band size : 60 kDa. Blocking/Dilution buffer: 5% NFDm/TBST.

VANGL2 Antibody (C-Term) - Background

Involved in the control of early morphogenesis and patterning of both axial midline structures and the development of neural plate. Plays a role in the regulation of planar cell polarity, particularly in the orientation of stereociliary bundles in the cochlea. Required for polarization and movement of myocardializing cells in the outflow tract and seems to act via RHOA signaling to regulate this process. Required for cell surface localization of FZD3 and FZD6 in the inner ear (By similarity).

VANGL2 Antibody (C-Term) - References

Nagase T.,et al.DNA Res. 6:337-345(1999).
Gregory S.G.,et al.Nature 441:315-321(2006).
Mural R.J.,et al.Submitted (SEP-2005) to the EMBL/GenBank/DDBJ databases.
Lei Y.P.,et al.N. Engl. J. Med. 362:2232-2235(2010).