

**NOTCH4 Antibody (C-term)**  
**Purified Rabbit Polyclonal Antibody (Pab)**  
**Catalog # AP21426b**

**Specification**

---

**NOTCH4 Antibody (C-term) - Product Information**

|                   |                        |
|-------------------|------------------------|
| Application       | WB,E                   |
| Primary Accession | <a href="#">Q99466</a> |
| Reactivity        | Human                  |
| Host              | Rabbit                 |
| Clonality         | polyclonal             |
| Isotype           | Rabbit IgG             |

**NOTCH4 Antibody (C-term) - Additional Information**

**Gene ID** 4855

**Other Names**

Neurogenic locus notch homolog protein 4, Notch 4, hNotch4, Notch 4 extracellular truncation, Notch 4 intracellular domain, NOTCH4, INT3

**Target/Specificity**

This NOTCH4 antibody is generated from a rabbit immunized with a KLH conjugated synthetic peptide between 1819-1851 amino acids from the C-terminal region of human NOTCH4.

**Dilution**

WB~~1:2000

**Format**

Purified polyclonal antibody supplied in PBS with 0.09% (W/V) sodium azide. This antibody is purified through a protein A column, followed by peptide affinity purification.

**Storage**

Maintain refrigerated at 2-8°C for up to 2 weeks. For long term storage store at -20°C in small aliquots to prevent freeze-thaw cycles.

**Precautions**

NOTCH4 Antibody (C-term) is for research use only and not for use in diagnostic or therapeutic procedures.

**NOTCH4 Antibody (C-term) - Protein Information**

**Name** NOTCH4 ([HGNC:7884](#))

**Synonyms** INT3

**Function** Functions as a receptor for membrane-bound ligands Jagged1, Jagged2 and Delta1 to regulate cell-fate determination. Upon ligand activation through the released notch intracellular

domain (NICD) it forms a transcriptional activator complex with RBPJ/RBPSUH and activates genes of the enhancer of split locus. Affects the implementation of differentiation, proliferation and apoptotic programs. May regulate branching morphogenesis in the developing vascular system (By similarity).

#### Cellular Location

Cell membrane; Single-pass type I membrane protein

#### Tissue Location

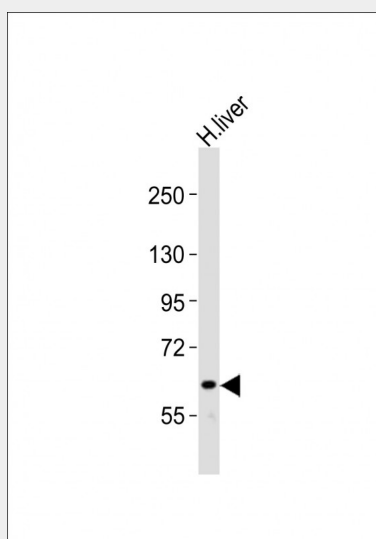
Highly expressed in the heart, moderately in the lung and placenta and at low levels in the liver, skeletal muscle, kidney, pancreas, spleen, lymph node, thymus, bone marrow and fetal liver. No expression was seen in adult brain or peripheral blood leukocytes

### NOTCH4 Antibody (C-term) - Protocols

Provided below are standard protocols that you may find useful for product applications.

- [Western Blot](#)
- [Blocking Peptides](#)
- [Dot Blot](#)
- [Immunohistochemistry](#)
- [Immunofluorescence](#)
- [Immunoprecipitation](#)
- [Flow Cytometry](#)
- [Cell Culture](#)

### NOTCH4 Antibody (C-term) - Images



Anti-NOTCH4 Antibody (C-term) at 1:2000 dilution + human liver lysates. Lysates/proteins at 20 µg per lane. Secondary Goat Anti-Rabbit IgG, (H+L), Peroxidase conjugated at 1/10000 dilution. Predicted band size : 210 kDa (isoform-1) and 62Kda (isoform-2). Blocking/Dilution buffer: 5% NFDM/TBST.

### NOTCH4 Antibody (C-term) - Background

Functions as a receptor for membrane-bound ligands Jagged1, Jagged2 and Delta1 to regulate cell-fate determination. Upon ligand activation through the released notch intracellular domain

(NICD) it forms a transcriptional activator complex with RBPJ/RBPSUH and activates genes of the enhancer of split locus. Affects the implementation of differentiation, proliferation and apoptotic programs. May regulate branching morphogenesis in the developing vascular system (By similarity).

#### **NOTCH4 Antibody (C-term) - References**

Sugaya K.,et al.Gene 189:235-244(1997).  
Li L.,et al.Genomics 51:45-58(1998).  
Mungall A.J.,et al.Nature 425:805-811(2003).  
Miyagawa T.,et al.Submitted (FEB-1999) to the EMBL/GenBank/DDBJ databases.  
Gray G.E.,et al.Am. J. Pathol. 154:785-794(1999).