

(Mouse) Bmi1 Antibody (Center)
Purified Rabbit Polyclonal Antibody (Pab)
Catalog # AP21471c

Specification

(Mouse) Bmi1 Antibody (Center) - Product Information

Application	WB,E
Primary Accession	P25916
Reactivity	Mouse
Host	Rabbit
Clonality	polyclonal
Isotype	Rabbit IgG

(Mouse) Bmi1 Antibody (Center) - Additional Information

Gene ID 12151

Other Names

Polycomb complex protein BMI-1, Polycomb group RING finger protein 4, Bmi1, Bmi-1, Pcgf4

Target/Specificity

This Mouse Bmi1 antibody is generated from a rabbit immunized with a KLH conjugated synthetic peptide between 109-143 amino acids from the Central region of Mouse Bmi1.

Dilution

WB~~1:2000

Format

Purified polyclonal antibody supplied in PBS with 0.09% (W/V) sodium azide. This antibody is purified through a protein A column, followed by peptide affinity purification.

Storage

Maintain refrigerated at 2-8°C for up to 2 weeks. For long term storage store at -20°C in small aliquots to prevent freeze-thaw cycles.

Precautions

(Mouse) Bmi1 Antibody (Center) is for research use only and not for use in diagnostic or therapeutic procedures.

(Mouse) Bmi1 Antibody (Center) - Protein Information

Name Bmi1

Synonyms Bmi-1, Pcgf4

Function Component of a Polycomb group (PcG) multiprotein PRC1-like complex, a complex class required to maintain the transcriptionally repressive state of many genes, including Hox genes, throughout development. PcG PRC1 complex acts via chromatin remodeling and modification of

histones; it mediates monoubiquitination of histone H2A 'Lys-119', rendering chromatin heritably changed in its expressibility. The complex composed of RNF2, UB2D3 and BMI1 binds nucleosomes, and has activity only with nucleosomal histone H2A. In the PRC1-like complex, regulates the E3 ubiquitin-protein ligase activity of RNF2/RING2 (By similarity).

Cellular Location

Nucleus {ECO:0000250|UniProtKB:P35226}. Cytoplasm {ECO:0000250|UniProtKB:P35226}

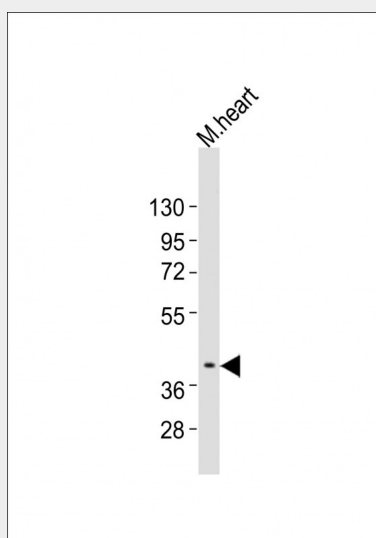
Tissue Location

Detected in most organs with high expression levels in thymus, heart, brain and testis

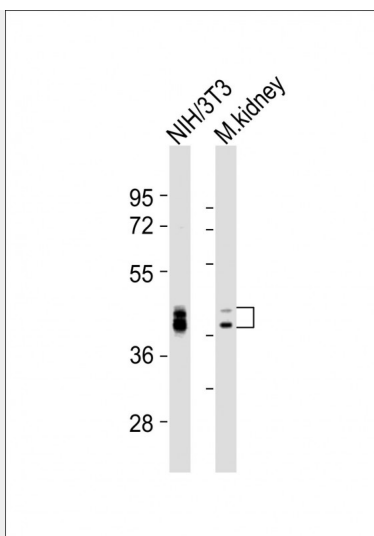
(Mouse) Bmi1 Antibody (Center) - Protocols

Provided below are standard protocols that you may find useful for product applications.

- [Western Blot](#)
- [Blocking Peptides](#)
- [Dot Blot](#)
- [Immunohistochemistry](#)
- [Immunofluorescence](#)
- [Immunoprecipitation](#)
- [Flow Cytometry](#)
- [Cell Culture](#)

(Mouse) Bmi1 Antibody (Center) - Images

Anti-Bmi1 Antibody (Center) at 1:2000 dilution + mouse heart lysates. Lysates/proteins at 20 µg per lane. Secondary Goat Anti-Rabbit IgG, (H+L), Peroxidase conjugated at 1/10000 dilution. Predicted band size : 37 kDa. Blocking/Dilution buffer: 5% NFDM/TBST.



All lanes : Anti-Bmi1 Antibody (Center) at 1:2000 dilution Lane 1: NIH/3T3 whole cell lysates Lane 2: mouse kidney lysates Lysates/proteins at 20 µg per lane. Secondary Goat Anti-Rabbit IgG, (H+L), Peroxidase conjugated at 1/10000 dilution Predicted band size : 37 kDa Blocking/Dilution buffer: 5% NFDM/TBST.

(Mouse) Bmi1 Antibody (Center) - Background

Component of a Polycomb group (PcG) multiprotein PRC1- like complex, a complex class required to maintain the transcriptionally repressive state of many genes, including Hox genes, throughout development. PcG PRC1 complex acts via chromatin remodeling and modification of histones; it mediates monoubiquitination of histone H2A 'Lys-119', rendering chromatin heritably changed in its expressibility. In the PRC1 complex, it is required to stimulate the E3 ubiquitin-protein ligase activity of RNF2/RING2 (By similarity).

(Mouse) Bmi1 Antibody (Center) - References

Haupt Y.,et al.Cell 65:753-763(1991).
van Lohuiizen M.,et al.Cell 65:737-752(1991).
Cao R.,et al.Mol. Cell 20:845-854(2005).
Buchwald G.,et al.EMBO J. 25:2465-2474(2006).