

**JAG1 Antibody (C-term)**  
**Purified Rabbit Polyclonal Antibody (Pab)**  
**Catalog # AP21532b****Specification**

---

**JAG1 Antibody (C-term) - Product Information**

Application	WB,E
Primary Accession	<a href="#">P78504</a>
Reactivity	Human
Host	Rabbit
Clonality	polyclonal
Isotype	Rabbit IgG
Calculated MW	133799

**JAG1 Antibody (C-term) - Additional Information****Gene ID** 182**Other Names**

Protein jagged-1, Jagged1, hJ1, CD339, JAG1, JAGL1

**Target/Specificity**

This JAG1 antibody is generated from a rabbit immunized with a KLH conjugated synthetic peptide between 1190-1224 amino acids from the C-terminal region of human JAG1.

**Dilution**

WB~~1:2000

**Format**

Purified polyclonal antibody supplied in PBS with 0.09% (W/V) sodium azide. This antibody is purified through a protein A column, followed by peptide affinity purification.

**Storage**

Maintain refrigerated at 2-8°C for up to 2 weeks. For long term storage store at -20°C in small aliquots to prevent freeze-thaw cycles.

**Precautions**

JAG1 Antibody (C-term) is for research use only and not for use in diagnostic or therapeutic procedures.

**JAG1 Antibody (C-term) - Protein Information****Name** JAG1**Synonyms** JAGL1

**Function** Ligand for multiple Notch receptors and involved in the mediation of Notch signaling (PubMed:[18660822](#), PubMed:[20437614](#)). May be involved in cell-fate decisions during

hematopoiesis (PubMed:[9462510](#)). Seems to be involved in early and late stages of mammalian cardiovascular development. Inhibits myoblast differentiation (By similarity). Enhances fibroblast growth factor-induced angiogenesis (in vitro).

#### **Cellular Location**

Membrane; Single-pass type I membrane protein. Cell membrane

#### **Tissue Location**

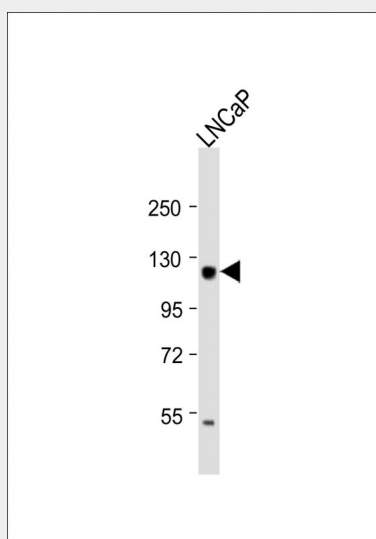
Widely expressed in adult and fetal tissues. In cervix epithelium expressed in undifferentiated subcolumnar reserve cells and squamous metaplasia. Expression is up-regulated in cervical squamous cell carcinoma. Expressed in bone marrow cell line HS-27a which supports the long-term maintenance of immature progenitor cells

### **JAG1 Antibody (C-term) - Protocols**

Provided below are standard protocols that you may find useful for product applications.

- [Western Blot](#)
- [Blocking Peptides](#)
- [Dot Blot](#)
- [Immunohistochemistry](#)
- [Immunofluorescence](#)
- [Immunoprecipitation](#)
- [Flow Cytometry](#)
- [Cell Culture](#)

### **JAG1 Antibody (C-term) - Images**



Anti-JAG1 Antibody (C-term) at 1:2000 dilution + LNCaP whole cell lysates. Lysates/proteins at 20 µg per lane. Secondary Goat Anti-Rabbit IgG, (H+L), Peroxidase conjugated at 1/10000 dilution. Predicted band size : 134 kDa. Blocking/Dilution buffer: 5% NFDM/TBST.

### **JAG1 Antibody (C-term) - Background**

Ligand for multiple Notch receptors and involved in the mediation of Notch signaling. May be involved in cell-fate decisions during hematopoiesis. Seems to be involved in early and late stages of mammalian cardiovascular development. Inhibits myoblast differentiation (By similarity).

Enhances fibroblast growth factor-induced angiogenesis (in vitro).

**JAG1 Antibody (C-term) - References**

Oda T.,et al.Genomics 43:376-379(1997).  
Li L.,et al.Nat. Genet. 16:243-251(1997).  
Li L.,et al.Immunity 8:43-55(1998).  
Bash J.,et al.EMBO J. 18:2803-2811(1999).  
Gray G.E.,et al.Am. J. Pathol. 154:785-794(1999).