

**WNT7A Antibody**  
**Purified Rabbit Polyclonal Antibody (Pab)**  
**Catalog # AP21552a****Specification**

---

**WNT7A Antibody - Product Information**

Application	WB,E
Primary Accession	<a href="#">O00755</a>
Reactivity	Human
Host	Rabbit
Clonality	polyclonal
Isotype	Rabbit IgG
Calculated MW	39005

**WNT7A Antibody - Additional Information****Gene ID** 7476**Other Names**

Protein Wnt-7a, WNT7A

**Target/Specificity**

This WNT7A antibody is generated from a rabbit immunized with a recombinant protein of human WNT7A.

**Dilution**

WB~~1:2000

**Format**

Purified polyclonal antibody supplied in PBS with 0.09% (W/V) sodium azide. This antibody is purified through a protein A column, followed by peptide affinity purification.

**Storage**

Maintain refrigerated at 2-8°C for up to 2 weeks. For long term storage store at -20°C in small aliquots to prevent freeze-thaw cycles.

**Precautions**

WNT7A Antibody is for research use only and not for use in diagnostic or therapeutic procedures.

**WNT7A Antibody - Protein Information****Name** WNT7A

**Function** Ligand for members of the frizzled family of seven transmembrane receptors that functions in the canonical Wnt/beta- catenin signaling pathway (By similarity). Plays an important role in embryonic development, including dorsal versus ventral patterning during limb development, skeleton development and urogenital tract development (PubMed:[16826533](#)). Required for central nervous system (CNS) angiogenesis and blood-brain barrier regulation

(PubMed:[30026314](#)). Required for normal, sexually dimorphic development of the Mullerian ducts, and for normal fertility in both sexes (By similarity). Required for normal neural stem cell proliferation in the hippocampus dentate gyrus (By similarity). Required for normal progress through the cell cycle in neural progenitor cells, for self-renewal of neural stem cells, and for normal neuronal differentiation and maturation (By similarity). Promotes formation of synapses via its interaction with FZD5 (By similarity).

#### Cellular Location

Secreted, extracellular space, extracellular matrix. Secreted

#### Tissue Location

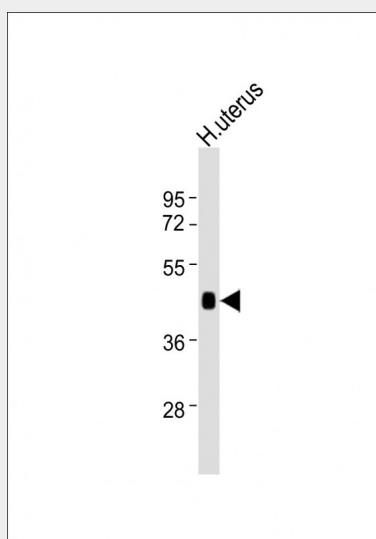
Expression is restricted to placenta, kidney, testis, uterus, fetal lung, and fetal and adult brain

### WNT7A Antibody - Protocols

Provided below are standard protocols that you may find useful for product applications.

- [Western Blot](#)
- [Blocking Peptides](#)
- [Dot Blot](#)
- [Immunohistochemistry](#)
- [Immunofluorescence](#)
- [Immunoprecipitation](#)
- [Flow Cytometry](#)
- [Cell Culture](#)

### WNT7A Antibody - Images



Anti-WNT7A Antibody at 1:2000 dilution + human uterus lysates Lysates/proteins at 20 µg per lane. Secondary Goat Anti-Rabbit IgG, (H+L), Peroxidase conjugated at 1/10000 dilution. Predicted band size : 39 kDa Blocking/Dilution buffer: 5% NFDM/TBST.

### WNT7A Antibody - Background

Ligand for members of the frizzled family of seven transmembrane receptors. Probable developmental protein. Signaling by Wnt-7a allows sexually dimorphic development of the mullerian ducts (By similarity).

**WNT7A Antibody - References**

- Bui T.D.,et al.Gene 189:25-29(1997).  
Ikegawa S.,et al.Cytogenet. Cell Genet. 74:149-152(1996).  
Mural R.J.,et al.Submitted (JUL-2005) to the EMBL/GenBank/DDBJ databases.  
Huguet E.L.,et al.Cancer Res. 54:2615-2621(1994).  
Woods C.G.,et al.Am. J. Hum. Genet. 79:402-408(2006).