

**SPCS1 Antibody (Center)**  
**Purified Rabbit Polyclonal Antibody (Pab)**  
**Catalog # AP21622c****Specification**

---

**SPCS1 Antibody (Center) - Product Information**

Application	WB,E
Primary Accession	<a href="#">Q9Y6A9</a>
Reactivity	Human
Host	Rabbit
Clonality	polyclonal
Isotype	Rabbit IgG

**SPCS1 Antibody (Center) - Additional Information****Gene ID** 28972**Other Names**

Signal peptidase complex subunit 1, 34--, Microsomal signal peptidase 12 kDa subunit, SPase 12 kDa subunit, SPCS1, SPC12

**Target/Specificity**

This SPCS1 antibody is generated from a rabbit immunized with a KLH conjugated synthetic peptide between 66-100 amino acids from the Central region of human SPCS1.

**Dilution**

WB~~1:2000

**Format**

Purified polyclonal antibody supplied in PBS with 0.09% (W/V) sodium azide. This antibody is purified through a protein A column, followed by peptide affinity purification.

**Storage**

Maintain refrigerated at 2-8°C for up to 2 weeks. For long term storage store at -20°C in small aliquots to prevent freeze-thaw cycles.

**Precautions**

SPCS1 Antibody (Center) is for research use only and not for use in diagnostic or therapeutic procedures.

**SPCS1 Antibody (Center) - Protein Information****Name** SPCS1**Synonyms** SPC12

**Function** Component of the signal peptidase complex (SPC) which catalyzes the cleavage of N-terminal signal sequences from nascent proteins as they are translocated into the lumen of the

endoplasmic reticulum (PubMed:[34388369](#)). Dispensable for SPC enzymatic activity (By similarity).

#### Cellular Location

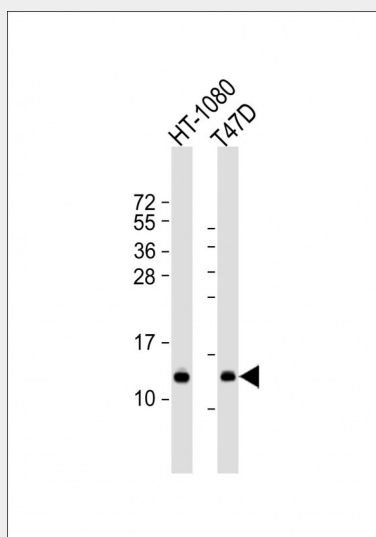
Endoplasmic reticulum membrane {ECO:0000250|UniProtKB:P83362}; Multi-pass membrane protein {ECO:0000250|UniProtKB:P83362}

### SPCS1 Antibody (Center) - Protocols

Provided below are standard protocols that you may find useful for product applications.

- [Western Blot](#)
- [Blocking Peptides](#)
- [Dot Blot](#)
- [Immunohistochemistry](#)
- [Immunofluorescence](#)
- [Immunoprecipitation](#)
- [Flow Cytometry](#)
- [Cell Culture](#)

### SPCS1 Antibody (Center) - Images



All lanes : Anti-SPCS1 Antibody (Center) at 1:2000 dilution Lane 1: HT-1080 whole cell lysate Lane 2: T47D whole cell lysate Lysates/proteins at 20 µg per lane. Secondary Goat Anti-Rabbit IgG, (H+L), Peroxidase conjugated at 1/10000 dilution. Predicted band size : 12 kDa Blocking/Dilution buffer: 5% NFDM/TBST.

### SPCS1 Antibody (Center) - Background

Component of the microsomal signal peptidase complex which removes signal peptides from nascent proteins as they are translocated into the lumen of the endoplasmic reticulum.

### SPCS1 Antibody (Center) - References

Zhang Q.-H.,et al.Genome Res. 10:1546-1560(2000).  
Ota T.,et al.Nat. Genet. 36:40-45(2004).  
Kalies K.-U.,et al.J. Biol. Chem. 271:3925-3929(1996).  
Muzny D.M.,et al.Nature 440:1194-1198(2006).

Burkard T.R.,et al.BMC Syst. Biol. 5:17-17(2011).