

**SCAF8 Antibody (Center)**  
**Purified Rabbit Polyclonal Antibody (Pab)**  
**Catalog # AP21643c****Specification**

---

**SCAF8 Antibody (Center) - Product Information**

Application	WB,E
Primary Accession	<a href="#">Q9UPN6</a>
Reactivity	Human
Host	Rabbit
Clonality	polyclonal
Isotype	Rabbit IgG
Calculated MW	140519

**SCAF8 Antibody (Center) - Additional Information****Gene ID** 22828**Other Names**

Protein SCAF8, CDC5L complex-associated protein 7, RNA-binding motif protein 16, SR-related and CTD-associated factor 8, SCAF8, CCAP7, KIAA1116, RBM16

**Target/Specificity**

This SCAF8 antibody is generated from a rabbit immunized with a KLH conjugated synthetic peptide between 520-554 amino acids from the Central region of human SCAF8.

**Dilution**

WB~~1:2000

**Format**

Purified polyclonal antibody supplied in PBS with 0.09% (W/V) sodium azide. This antibody is purified through a protein A column, followed by peptide affinity purification.

**Storage**

Maintain refrigerated at 2-8°C for up to 2 weeks. For long term storage store at -20°C in small aliquots to prevent freeze-thaw cycles.

**Precautions**

SCAF8 Antibody (Center) is for research use only and not for use in diagnostic or therapeutic procedures.

**SCAF8 Antibody (Center) - Protein Information****Name** SCAF8 {ECO:0000303|PubMed:9528809, ECO:0000312|HGNC:HGNC:20959}

**Function** Anti-terminator protein required to prevent early mRNA termination during transcription (PubMed:[31104839](#)). Together with SCAF4, acts by suppressing the use of early, alternative poly(A) sites, thereby preventing the accumulation of non-functional truncated proteins

(PubMed:[31104839](#)). Mechanistically, associates with the phosphorylated C-terminal heptapeptide repeat domain (CTD) of the largest RNA polymerase II subunit (POLR2A), and subsequently binds nascent RNA upstream of early polyadenylation sites to prevent premature mRNA transcript cleavage and polyadenylation (PubMed:[31104839](#)). Independently of SCAF4, also acts as a positive regulator of transcript elongation (PubMed:[31104839](#)).

#### Cellular Location

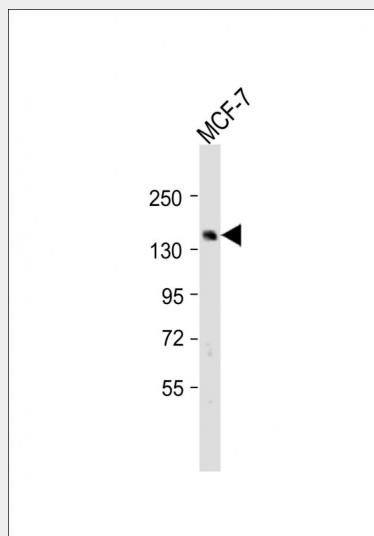
Nucleus. Nucleus matrix. Note=Detected in granular nuclear foci which correspond to sites of active transcription

### SCAF8 Antibody (Center) - Protocols

Provided below are standard protocols that you may find useful for product applications.

- [Western Blot](#)
- [Blocking Peptides](#)
- [Dot Blot](#)
- [Immunohistochemistry](#)
- [Immunofluorescence](#)
- [Immunoprecipitation](#)
- [Flow Cytometry](#)
- [Cell Culture](#)

### SCAF8 Antibody (Center) - Images



Anti-SCAF8 Antibody (Center) at 1:2000 dilution + MCF-7 whole cell lysate Lysates/proteins at 20 µg per lane. Secondary Goat Anti-Rabbit IgG, (H+L), Peroxidase conjugated at 1/10000 dilution. Predicted band size : 141 kDa Blocking/Dilution buffer: 5% NFDM/TBST.

### SCAF8 Antibody (Center) - Background

May play a role in mRNA processing.

### SCAF8 Antibody (Center) - References

Kikuno R.,et al.DNA Res. 6:197-205(1999).  
Ota T.,et al.Nat. Genet. 36:40-45(2004).

Mungall A.J.,et al.Nature 425:805-811(2003).  
Patturajan M.,et al.Mol. Cell. Biol. 18:2406-2415(1998).  
Ajuh P.,et al.EMBO J. 19:6569-6581(2000).