

**PTGFR Antibody (Center)**  
**Purified Rabbit Polyclonal Antibody (Pab)**  
**Catalog # AP21723c**

**Specification**

---

**PTGFR Antibody (Center) - Product Information**

Application	WB,E
Primary Accession	<a href="#">P43088</a>
Reactivity	Human
Host	Rabbit
Clonality	polyclonal
Isotype	Rabbit IgG
Calculated MW	40055

**PTGFR Antibody (Center) - Additional Information**

**Gene ID** 5737

**Other Names**

Prostaglandin F2-alpha receptor, PGF receptor, PGF2-alpha receptor, Prostanoid FP receptor, PTGFR

**Target/Specificity**

This PTGFR antibody is generated from a rabbit immunized with a KLH conjugated synthetic peptide between 169-199 amino acids from the Central region of human PTGFR.

**Dilution**

WB~~1:2000

**Format**

Purified polyclonal antibody supplied in PBS with 0.09% (W/V) sodium azide. This antibody is purified through a protein A column, followed by peptide affinity purification.

**Storage**

Maintain refrigerated at 2-8°C for up to 2 weeks. For long term storage store at -20°C in small aliquots to prevent freeze-thaw cycles.

**Precautions**

PTGFR Antibody (Center) is for research use only and not for use in diagnostic or therapeutic procedures.

**PTGFR Antibody (Center) - Protein Information**

**Name** PTGFR

**Function** Receptor for prostaglandin F2-alpha (PGF2-alpha). The activity of this receptor is mediated by G proteins which activate a phosphatidylinositol-calcium second messenger system. Initiates luteolysis in the corpus luteum (By similarity). Isoforms 2 to 7 do not bind PGF2-alpha but

are proposed to modulate signaling by participating in variant receptor complexes; heterodimers between isoform 1 and isoform 5 are proposed to be a receptor for prostamides including the synthetic analog bimatoprost.

**Cellular Location**

Cell membrane; Multi-pass membrane protein.

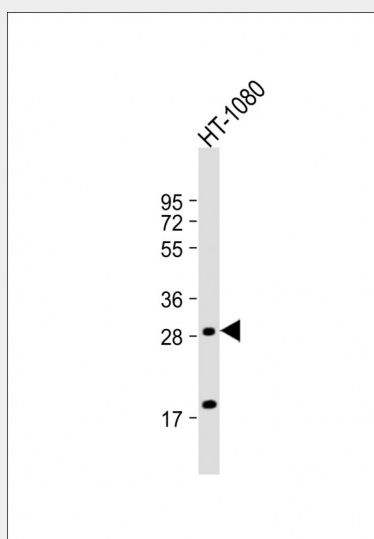
**Tissue Location**

Eye..

**PTGFR Antibody (Center) - Protocols**

Provided below are standard protocols that you may find useful for product applications.

- [Western Blot](#)
- [Blocking Peptides](#)
- [Dot Blot](#)
- [Immunohistochemistry](#)
- [Immunofluorescence](#)
- [Immunoprecipitation](#)
- [Flow Cytometry](#)
- [Cell Culture](#)

**PTGFR Antibody (Center) - Images**

Anti-PTGFR Antibody (Center) at 1:2000 dilution + HT-1080 whole cell lysate Lysates/proteins at 20 µg per lane. Secondary Goat Anti-Rabbit IgG, (H+L), Peroxidase conjugated at 1/10000 dilution. Predicted band size : 40 kDa Blocking/Dilution buffer: 5% NFD/TBST.

**PTGFR Antibody (Center) - Background**

Receptor for prostaglandin F<sub>2</sub>-alpha (PGF<sub>2</sub>-alpha). The activity of this receptor is mediated by G proteins which activate a phosphatidylinositol-calcium second messenger system. Initiates luteolysis in the corpus luteum (By similarity). Isoforms 2 to 7 do not bind PGF<sub>2</sub>-alpha but are proposed to modulate signaling by participating in variant receptor complexes; heterodimers between isoform 1 and isoform 5 are proposed to be a receptor for prostamides including the synthetic analog bimatoprost.

**PTGFR Antibody (Center) - References**

Abramovitz M.,et al.J. Biol. Chem. 269:2632-2636(1994).  
Kunapuli P.,et al.J. Biol. Chem. 272:27147-27154(1997).  
Kopatz S.A.,et al.Submitted (JUL-2003) to the EMBL/GenBank/DDBJ databases.  
Vielhauer G.A.,et al.Arch. Biochem. Biophys. 421:175-185(2004).  
Ota T.,et al.Nat. Genet. 36:40-45(2004).