

**NDUFV1 Antibody (Center)**  
**Purified Rabbit Polyclonal Antibody (Pab)**  
**Catalog # AP21746c**

**Specification**

---

**NDUFV1 Antibody (Center) - Product Information**

Application	WB,E
Primary Accession	<a href="#">P49821</a>
Reactivity	Human, Mouse
Host	Rabbit
Clonality	polyclonal
Isotype	Rabbit IgG
Calculated MW	50817

**NDUFV1 Antibody (Center) - Additional Information**

**Gene ID** 4723

**Other Names**

NADH dehydrogenase [ubiquinone] flavoprotein 1, mitochondrial, Complex I-51kD, CI-51kD, NADH dehydrogenase flavoprotein 1, NADH-ubiquinone oxidoreductase 51 kDa subunit, NDUFV1, UQOR1

**Target/Specificity**

This NDUFV1 antibody is generated from a rabbit immunized with a KLH conjugated synthetic peptide between 194-226 amino acids from the Central region of human NDUFV1.

**Dilution**

WB~~1:2000

**Format**

Purified polyclonal antibody supplied in PBS with 0.09% (W/V) sodium azide. This antibody is purified through a protein A column, followed by peptide affinity purification.

**Storage**

Maintain refrigerated at 2-8°C for up to 2 weeks. For long term storage store at -20°C in small aliquots to prevent freeze-thaw cycles.

**Precautions**

NDUFV1 Antibody (Center) is for research use only and not for use in diagnostic or therapeutic procedures.

**NDUFV1 Antibody (Center) - Protein Information**

**Name** NDUFV1 ([HGNC:7716](#))

**Synonyms** UQOR1

**Function** Core subunit of the mitochondrial membrane respiratory chain NADH dehydrogenase

(Complex I) which catalyzes electron transfer from NADH through the respiratory chain, using ubiquinone as an electron acceptor (PubMed:[28844695](#)). Part of the peripheral arm of the enzyme, where the electrons from NADH are accepted by flavin mononucleotide (FMN) and then passed along a chain of iron-sulfur clusters by electron tunnelling to the final acceptor ubiquinone (PubMed:[28844695](#)). Contains FMN, which is the initial electron acceptor as well as one iron-sulfur cluster (PubMed:[28844695](#)).

#### Cellular Location

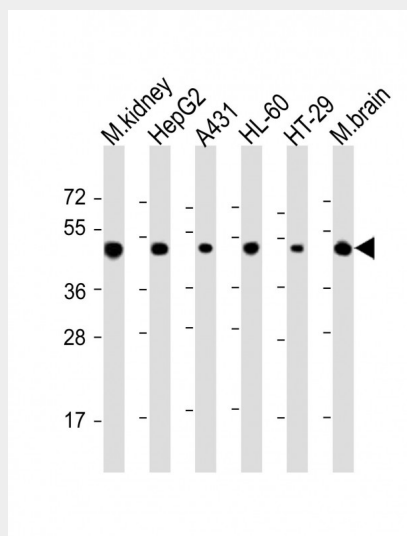
Mitochondrion inner membrane {ECO:0000250|UniProtKB:P25708}; Peripheral membrane protein {ECO:0000250|UniProtKB:P25708}; Matrix side {ECO:0000250|UniProtKB:P25708}

#### NDUFV1 Antibody (Center) - Protocols

Provided below are standard protocols that you may find useful for product applications.

- [Western Blot](#)
- [Blocking Peptides](#)
- [Dot Blot](#)
- [Immunohistochemistry](#)
- [Immunofluorescence](#)
- [Immunoprecipitation](#)
- [Flow Cytometry](#)
- [Cell Culture](#)

#### NDUFV1 Antibody (Center) - Images



All lanes : Anti-NDUFV1 Antibody (Center) at 1:2000 dilution Lane 1: mouse kidney lysate Lane 2: HepG2 whole cell lysate Lane 3: A431 whole cell lysate Lane 4: HL-60 whole cell lysate Lane 5: HT-29 whole cell lysate Lane 6: mouse brain lysate Lysates/proteins at 20 µg per lane. Secondary Goat Anti-Rabbit IgG, (H+L), Peroxidase conjugated at 1/10000 dilution. Predicted band size : 51 kDa Blocking/Dilution buffer: 5% NFDM/TBST.

#### NDUFV1 Antibody (Center) - Background

Core subunit of the mitochondrial membrane respiratory chain NADH dehydrogenase (Complex I) that is believed to belong to the minimal assembly required for catalysis. Complex I functions in the transfer of electrons from NADH to the respiratory chain. The immediate electron acceptor for the

enzyme is believed to be ubiquinone (By similarity).

#### **NDUFV1 Antibody (Center) - References**

de Coo R.F.M.,et al.Mamm. Genome 10:49-53(1999).  
Schuelke M.,et al.Biochem. Biophys. Res. Commun. 245:599-606(1998).  
Hu R.-M.,et al.Proc. Natl. Acad. Sci. U.S.A. 97:9543-9548(2000).  
Ebert L.,et al.Submitted (JUN-2004) to the EMBL/GenBank/DDBJ databases.  
Mural R.J.,et al.Submitted (JUL-2005) to the EMBL/GenBank/DDBJ databases.