

**WDR51B Antibody (C-term)**  
**Purified Rabbit Polyclonal Antibody (Pab)**  
**Catalog # AP21756b****Specification**

---

**WDR51B Antibody (C-term) - Product Information**

Application	WB,E
Primary Accession	<a href="#">Q8TC44</a>
Reactivity	Human
Host	Rabbit
Clonality	polyclonal
Isotype	Rabbit IgG
Calculated MW	53668

**WDR51B Antibody (C-term) - Additional Information****Gene ID** 282809**Other Names**

POC1 centriolar protein homolog B, Pix1, Proteome of centriole protein 1B, WD repeat-containing protein 51B, POC1B, WDR51B

**Target/Specificity**

This WDR51B antibody is generated from a rabbit immunized with a KLH conjugated synthetic peptide between 386-417 amino acids from the C-terminal region of human WDR51B.

**Dilution**

WB~~1:2000

**Format**

Purified polyclonal antibody supplied in PBS with 0.09% (W/V) sodium azide. This antibody is purified through a protein A column, followed by peptide affinity purification.

**Storage**

Maintain refrigerated at 2-8°C for up to 2 weeks. For long term storage store at -20°C in small aliquots to prevent freeze-thaw cycles.

**Precautions**

WDR51B Antibody (C-term) is for research use only and not for use in diagnostic or therapeutic procedures.

**WDR51B Antibody (C-term) - Protein Information****Name** POC1B ([HGNC:30836](#))**Synonyms** WDR51B**Function** Plays an important role in centriole assembly and/or stability and ciliogenesis

(PubMed:[20008567](#), PubMed:[32060285](#)). Involved in early steps of centriole duplication, as well as in the later steps of centriole length control (PubMed:[19109428](#)). Acts in concert with POC1A to ensure centriole integrity and proper mitotic spindle formation (PubMed:[32060285](#)). Required for primary cilia formation, ciliary length and also cell proliferation (PubMed:[23015594](#)). Required for retinal integrity (PubMed:[25044745](#)).

#### Cellular Location

Cytoplasm, cytoskeleton, microtubule organizing center, centrosome. Cytoplasm, cytoskeleton, microtubule organizing center, centrosome, centriole. Cytoplasm, cytoskeleton, cilium basal body. Cytoplasm, cytoskeleton, spindle pole. Note=Component of both mother and daughter centrioles (PubMed:32060285). Localizes to the basal body and centriole adjacent to the connecting cilium of photoreceptors and in synapses of the outer plexiform layer. {ECO:0000250|UniProtKB:Q8BHD1, ECO:0000269|PubMed:32060285}

#### Tissue Location

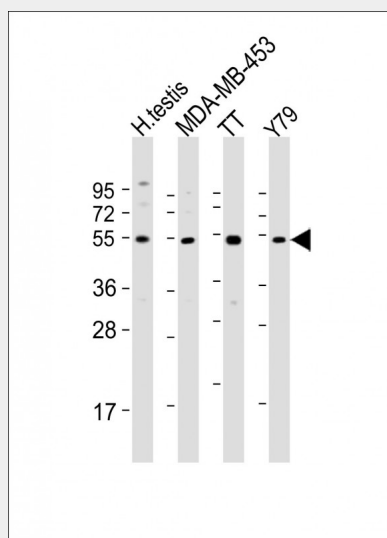
Expressed in the retina.

### WDR51B Antibody (C-term) - Protocols

Provided below are standard protocols that you may find useful for product applications.

- [Western Blot](#)
- [Blocking Peptides](#)
- [Dot Blot](#)
- [Immunohistochemistry](#)
- [Immunofluorescence](#)
- [Immunoprecipitation](#)
- [Flow Cytometry](#)
- [Cell Culture](#)

### WDR51B Antibody (C-term) - Images



All lanes : Anti-WDR51B Antibody (C-term) at 1:2000 dilution Lane 1: human testis lysate Lane 2: MDA-MB-453 whole cell lysate Lane 3: TT whole cell lysate Lane 4: Y79 whole cell lysate Lysates/proteins at 20 µg per lane. Secondary Goat Anti-Rabbit IgG, (H+L), Peroxidase conjugated at 1/10000 dilution. Predicted band size : 54 kDa Blocking/Dilution buffer: 5% NFDm/TBST.

**WDR51B Antibody (C-term) - Background**

Plays an important role in centriole assembly and/or stability and ciliogenesis (PubMed:20008567). Involved in early steps of centriole duplication, as well as in the later steps of centriole length control (PubMed:19109428). Acts in concert with POC1A to ensure centriole integrity and proper mitotic spindle formation. Required for primary cilia formation, ciliary length and also cell proliferation (PubMed:23015594). Required for retinal integrity (PubMed:25044745).

**WDR51B Antibody (C-term) - References**

Ota T.,et al.Nat. Genet. 36:40-45(2004).  
Scherer S.E.,et al.Nature 440:346-351(2006).  
Mural R.J.,et al.Submitted (JUL-2005) to the EMBL/GenBank/DDBJ databases.  
Hames R.S.,et al.Exp. Cell Res. 314:574-589(2008).  
Dephoure N.,et al.Proc. Natl. Acad. Sci. U.S.A. 105:10762-10767(2008).