

**ADAM21 Antibody (C-term)**  
**Purified Rabbit Polyclonal Antibody (Pab)**  
**Catalog # AP21757b****Specification**

---

**ADAM21 Antibody (C-term) - Product Information**

Application	WB,E
Primary Accession	<a href="#">O9UKJ8</a>
Reactivity	Mouse
Host	Rabbit
Clonality	polyclonal
Isotype	Rabbit IgG
Calculated MW	80834

**ADAM21 Antibody (C-term) - Additional Information****Gene ID** 8747**Other Names**

Disintegrin and metalloproteinase domain-containing protein 21, ADAM 21, 3424-, ADAM21

**Target/Specificity**

This ADAM21 antibody is generated from a rabbit immunized with a KLH conjugated synthetic peptide between 645-679 amino acids from the C-terminal region of human ADAM21.

**Dilution**

WB~~1:2000

**Format**

Purified polyclonal antibody supplied in PBS with 0.09% (W/V) sodium azide. This antibody is purified through a protein A column, followed by peptide affinity purification.

**Storage**

Maintain refrigerated at 2-8°C for up to 2 weeks. For long term storage store at -20°C in small aliquots to prevent freeze-thaw cycles.

**Precautions**

ADAM21 Antibody (C-term) is for research use only and not for use in diagnostic or therapeutic procedures.

**ADAM21 Antibody (C-term) - Protein Information****Name** ADAM21

**Function** May be involved in sperm maturation and/or fertilization. May also be involved in epithelia functions associated with establishing and maintaining gradients of ions or nutrients.

**Cellular Location**

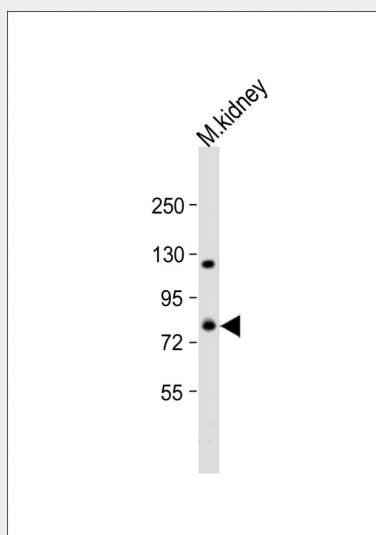
Membrane; Single-pass type I membrane protein.

### ADAM21 Antibody (C-term) - Protocols

Provided below are standard protocols that you may find useful for product applications.

- [Western Blot](#)
- [Blocking Peptides](#)
- [Dot Blot](#)
- [Immunohistochemistry](#)
- [Immunofluorescence](#)
- [Immunoprecipitation](#)
- [Flow Cytometry](#)
- [Cell Culture](#)

### ADAM21 Antibody (C-term) - Images



Anti-ADAM21 Antibody (C-term) at 1:2000 dilution + mouse kidney lysate Lysates/proteins at 20 µg per lane. Secondary Goat Anti-Rabbit IgG, (H+L), Peroxidase conjugated at 1/10000 dilution. Predicted band size : 81 kDa Blocking/Dilution buffer: 5% NFDm/TBST.

### ADAM21 Antibody (C-term) - Background

May be involved in sperm maturation and/or fertilization. May also be involved in epithelia functions associated with establishing and maintaining gradients of ions or nutrients.

### ADAM21 Antibody (C-term) - References

Poindexter K., et al. Gene 237:61-70(1999).  
Heilig R., et al. Nature 421:601-607(2003).  
Hooft van Huijsduijnen R., et al. Gene 206:273-282(1998).