

CRIPAK Antibody (Center)
Purified Rabbit Polyclonal Antibody (Pab)
Catalog # AP21790c**Specification**

CRIPAK Antibody (Center) - Product Information

Application	WB,E
Primary Accession	Q8N1N5
Reactivity	Human
Host	Rabbit
Clonality	polyclonal
Isotype	Rabbit IgG
Antigen Region	134-165

CRIPAK Antibody (Center) - Additional Information**Other Names**

Cysteine-rich PAK1 inhibitor, CRIPak, CRIPAK

Target/Specificity

This CRIPAK antibody is generated from a rabbit immunized with a KLH conjugated synthetic peptide between 134-165 amino acids from the Central region of human CRIPAK.

Dilution

WB~~1:1000

Format

Purified polyclonal antibody supplied in PBS with 0.09% (W/V) sodium azide. This antibody is purified through a protein A column, followed by peptide affinity purification.

Storage

Maintain refrigerated at 2-8°C for up to 2 weeks. For long term storage store at -20°C in small aliquots to prevent freeze-thaw cycles.

Precautions

CRIPAK Antibody (Center) is for research use only and not for use in diagnostic or therapeutic procedures.

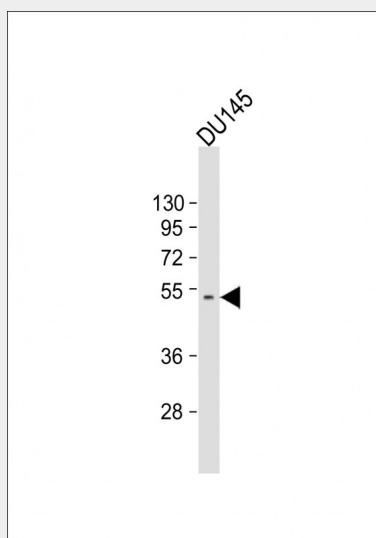
CRIPAK Antibody (Center) - Protein Information**CRIPAK Antibody (Center) - Protocols**

Provided below are standard protocols that you may find useful for product applications.

- [Western Blot](#)
- [Blocking Peptides](#)

- [Dot Blot](#)
- [Immunohistochemistry](#)
- [Immunofluorescence](#)
- [Immunoprecipitation](#)
- [Flow Cytometry](#)
- [Cell Culture](#)

CRIPAK Antibody (Center) - Images



Anti-CRIPAK Antibody (Center) at 1:1000 dilution + DU145 whole cell lysate Lysates/proteins at 20 µg per lane. Secondary Goat Anti-Rabbit IgG, (H+L), Peroxidase conjugated at 1/10000 dilution. Predicted band size : 43 kDa Blocking/Dilution buffer: 5% NFDM/TBST.

CRIPAK Antibody (Center) - Background

Negative regulator of PAK1. It has been suggested that the loss of CRIPAK in breast tumors might contribute to hormonal independence.

CRIPAK Antibody (Center) - References

Ota T., et al. Nat. Genet. 36:40-45(2004).
Talukder A.H., et al. Oncogene 25:1311-1319(2006).