

**NAGS Antibody (Center)**  
**Purified Rabbit Polyclonal Antibody (Pab)**  
**Catalog # AP21812c****Specification**

---

**NAGS Antibody (Center) - Product Information**

|                   |                        |
|-------------------|------------------------|
| Application       | WB,E                   |
| Primary Accession | <a href="#">Q8N159</a> |
| Reactivity        | Human                  |
| Host              | Rabbit                 |
| Clonality         | polyclonal             |
| Isotype           | Rabbit IgG             |
| Calculated MW     | 58156                  |

**NAGS Antibody (Center) - Additional Information****Gene ID** 162417**Other Names**

N-acetylglutamate synthase, mitochondrial, Amino-acid acetyltransferase, N-acetylglutamate synthase long form, N-acetylglutamate synthase short form, N-acetylglutamate synthase conserved domain form, NAGS

**Target/Specificity**

This NAGS antibody is generated from a rabbit immunized with a KLH conjugated synthetic peptide between 275-309 amino acids from the Central region of human NAGS.

**Dilution**

WB~~1:1000

**Format**

Purified polyclonal antibody supplied in PBS with 0.09% (W/V) sodium azide. This antibody is purified through a protein A column, followed by peptide affinity purification.

**Storage**

Maintain refrigerated at 2-8°C for up to 2 weeks. For long term storage store at -20°C in small aliquots to prevent freeze-thaw cycles.

**Precautions**

NAGS Antibody (Center) is for research use only and not for use in diagnostic or therapeutic procedures.

**NAGS Antibody (Center) - Protein Information****Name** NAGS

**Function** Plays a role in the regulation of ureagenesis by producing the essential cofactor N-acetylglutamate (NAG), thus modulating carbamoylphosphate synthase I (CPS1) activity.

**Cellular Location**

Mitochondrion matrix

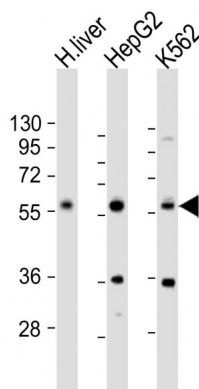
**Tissue Location**

Highly expressed in the adult liver, kidney and small intestine. Weakly expressed in the fetal liver, lung, pancreas, placenta, heart and brain tissue.

**NAGS Antibody (Center) - Protocols**

Provided below are standard protocols that you may find useful for product applications.

- [Western Blot](#)
- [Blocking Peptides](#)
- [Dot Blot](#)
- [Immunohistochemistry](#)
- [Immunofluorescence](#)
- [Immunoprecipitation](#)
- [Flow Cytometry](#)
- [Cell Culture](#)

**NAGS Antibody (Center) - Images**

All lanes : Anti-NAGS Antibody (Center) at 1:1000 dilution Lane 1: human liver lysate Lane 2: HepG2 whole cell lysate Lane 3: K562 whole cell lysate Lysates/proteins at 20 µg per lane. Secondary Goat Anti-Rabbit IgG, (H+L), Peroxidase conjugated at 1/10000 dilution. Predicted band size : 58 kDa Blocking/Dilution buffer: 5% NFD/MTBST.

**NAGS Antibody (Center) - Background**

Plays a role in the regulation of ureagenesis by producing the essential cofactor N-acetylglutamate (NAG), thus modulating carbamoylphosphate synthase I (CPSI) activity.

**NAGS Antibody (Center) - References**

Haeberle J., et al. Hum. Mutat. 21:593-597(2003).  
Ota T., et al. Nat. Genet. 36:40-45(2004).  
Caldovic L., et al. Biochem. Biophys. Res. Commun. 299:581-586(2002).

Zhao G.,et al.PLoS ONE 8:E70369-E70369(2013).  
Schmidt E.,et al.Biochim. Biophys. Acta 1740:54-59(2005).