

PDE1C Antibody (Center)
Purified Rabbit Polyclonal Antibody (Pab)
Catalog # AP21818c

Specification

PDE1C Antibody (Center) - Product Information

Application	WB,E
Primary Accession	Q14123
Reactivity	Human, Mouse, Rat
Host	Rabbit
Clonality	polyclonal
Isotype	Rabbit IgG
Calculated MW	80760

PDE1C Antibody (Center) - Additional Information

Gene ID 5137

Other Names

Calcium/calmodulin-dependent 3', 5'-cyclic nucleotide phosphodiesterase 1C, Cam-PDE 1C, hCam-3, PDE1C

Target/Specificity

This PDE1C antibody is generated from a rabbit immunized with a KLH conjugated synthetic peptide between 375-409 amino acids from the Central region of human PDE1C.

Dilution

WB~~1:1000-2000

Format

Purified polyclonal antibody supplied in PBS with 0.09% (W/V) sodium azide. This antibody is purified through a protein A column, followed by peptide affinity purification.

Storage

Maintain refrigerated at 2-8°C for up to 2 weeks. For long term storage store at -20°C in small aliquots to prevent freeze-thaw cycles.

Precautions

PDE1C Antibody (Center) is for research use only and not for use in diagnostic or therapeutic procedures.

PDE1C Antibody (Center) - Protein Information

Name PDE1C ([HGNC:8776](#))

Function Calmodulin-dependent cyclic nucleotide phosphodiesterase with a dual specificity for the second messengers cAMP and cGMP, which are key regulators of many important physiological processes (PubMed:[8557689](#), PubMed:[29860631](#)). Has a high affinity for both cAMP and cGMP

(PubMed:[8557689](#)). Modulates the amplitude and duration of the cAMP signal in sensory cilia in response to odorant stimulation, hence contributing to the generation of action potentials. Regulates smooth muscle cell proliferation. Regulates the stability of growth factor receptors, including PDGFRB (Probable).

Cellular Location

Lysosome {ECO:0000250|UniProtKB:Q64338}.

Tissue Location

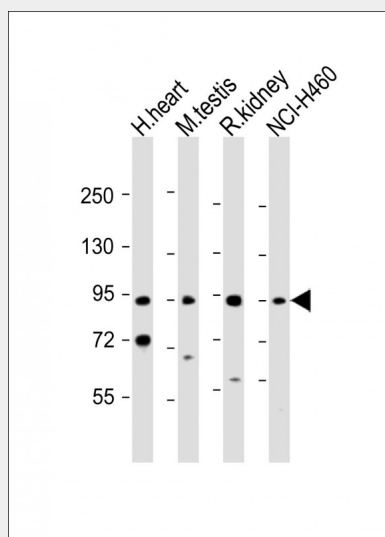
Isoform PDE1C2 is present in the heart and brain and, at lower levels in the lung, liver, kidney and skeletal muscle (PubMed:8557689). Isoform PDE1C1 is expressed in the heart and brain and, at lower levels in lung (PubMed:8557689). Also expressed at low levels in uterus and testis (PubMed:8557689)

PDE1C Antibody (Center) - Protocols

Provided below are standard protocols that you may find useful for product applications.

- [Western Blot](#)
- [Blocking Peptides](#)
- [Dot Blot](#)
- [Immunohistochemistry](#)
- [Immunofluorescence](#)
- [Immunoprecipitation](#)
- [Flow Cytometry](#)
- [Cell Culture](#)

PDE1C Antibody (Center) - Images



All lanes : Anti-PDE1C Antibody (Center) at 1:1000-2000 dilution Lane 1: human heart lysate Lane 2: mouse testis lysate Lane 3: rat kidney lysate Lane 4: NCI-H460 whole cell lysate Lysates/proteins at 20 µg per lane. Secondary Goat Anti-Rabbit IgG, (H+L), Peroxidase conjugated at 1/10000 dilution. Predicted band size : 81 kDa Blocking/Dilution buffer: 5% NFDM/TBST.

PDE1C Antibody (Center) - Background

Cyclic nucleotide phosphodiesterase with a dual- specificity for the second messengers cAMP and

cGMP, which are key regulators of many important physiological processes. Has a high affinity for both cAMP and cGMP.

PDE1C Antibody (Center) - References

Loughney K.,et al.J. Biol. Chem. 271:796-806(1996).
Ota T.,et al.Nat. Genet. 36:40-45(2004).
Hillier L.W.,et al.Nature 424:157-164(2003).
Oppermann F.S.,et al.Mol. Cell. Proteomics 8:1751-1764(2009).