

SDHC Antibody (C-Term)
Purified Rabbit Polyclonal Antibody (Pab)
Catalog # AP21871b**Specification**

SDHC Antibody (C-Term) - Product Information

Application	WB,E
Primary Accession	Q99643
Reactivity	Human, Mouse
Host	Rabbit
Clonality	polyclonal
Isotype	Rabbit IgG
Calculated MW	18610
Antigen Region	113-144

SDHC Antibody (C-Term) - Additional Information**Gene ID** 6391**Other Names**

Succinate dehydrogenase cytochrome b560 subunit, mitochondrial, Integral membrane protein CII-3, QPs-1, QPs1, Succinate dehydrogenase complex subunit C, Succinate-ubiquinone oxidoreductase cytochrome B large subunit, CYBL, SDHC, CYB560, SDH3

Target/Specificity

This SDHC antibody is generated from a rabbit immunized with a KLH conjugated synthetic peptide between 113-144 amino acids from human SDHC.

Dilution

WB~~1:2000

Format

Purified polyclonal antibody supplied in PBS with 0.09% (W/V) sodium azide. This antibody is purified through a protein A column, followed by peptide affinity purification.

Storage

Maintain refrigerated at 2-8°C for up to 2 weeks. For long term storage store at -20°C in small aliquots to prevent freeze-thaw cycles.

Precautions

SDHC Antibody (C-Term) is for research use only and not for use in diagnostic or therapeutic procedures.

SDHC Antibody (C-Term) - Protein Information**Name** SDHC**Synonyms** CYB560, SDH3

Function Membrane-anchoring subunit of succinate dehydrogenase (SDH) that is involved in complex II of the mitochondrial electron transport chain and is responsible for transferring electrons from succinate to ubiquinone (coenzyme Q).

Cellular Location

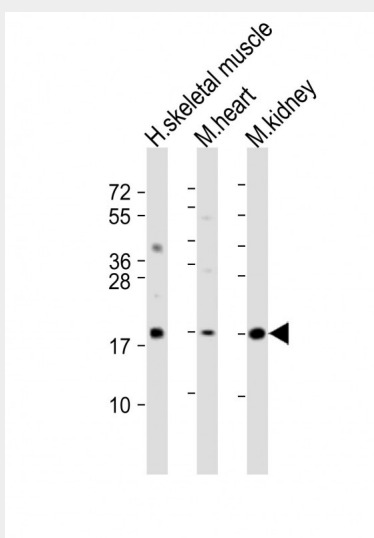
Mitochondrion inner membrane; Multi-pass membrane protein

SDHC Antibody (C-Term) - Protocols

Provided below are standard protocols that you may find useful for product applications.

- [Western Blot](#)
- [Blocking Peptides](#)
- [Dot Blot](#)
- [Immunohistochemistry](#)
- [Immunofluorescence](#)
- [Immunoprecipitation](#)
- [Flow Cytometry](#)
- [Cell Culture](#)

SDHC Antibody (C-Term) - Images



All lanes : Anti-SDHC Antibody (C-Term) at 1:2000 dilution Lane 1: human skeletal muscle lysate Lane 2: mouse heart lysate Lane 3: mouse kidney lysate Lysates/proteins at 20 µg per lane. Secondary Goat Anti-Rabbit IgG, (H+L), Peroxidase conjugated at 1/10000 dilution. Predicted band size : 19 kDa Blocking/Dilution buffer: 5% NFD/MTBST.

SDHC Antibody (C-Term) - Background

Membrane-anchoring subunit of succinate dehydrogenase (SDH) that is involved in complex II of the mitochondrial electron transport chain and is responsible for transferring electrons from succinate to ubiquinone (coenzyme Q).

SDHC Antibody (C-Term) - References

Au H.C.,et al.Submitted (MAY-1996) to the EMBL/GenBank/DDBJ databases.
Hirawake H.,et al.Cytogenet. Cell Genet. 79:132-138(1997).

Elbehti-Green A.,et al.Gene 213:133-140(1998).

Wohlk N.,et al.Mol. Genet. Metab. 65:187-190(1998).

Hiatomi H.,et al.Submitted (OCT-2005) to the EMBL/GenBank/DDBJ databases.