

**Ufc1 Antibody (C-term)**  
**Affinity Purified Rabbit Polyclonal Antibody (Pab)**  
**Catalog # AP2187b**

**Specification**

---

**Ufc1 Antibody (C-term) - Product Information**

Application	WB, IHC-P, FC,E
Primary Accession	<a href="#">O9Y3C8</a>
Reactivity	Human, Mouse
Host	Rabbit
Clonality	Polyclonal
Isotype	Rabbit IgG
Calculated MW	19458

**Ufc1 Antibody (C-term) - Additional Information**

**Gene ID** 51506

**Other Names**

Ubiquitin-fold modifier-conjugating enzyme 1, Ufm1-conjugating enzyme 1, UFC1

**Target/Specificity**

This Ufc1 antibody is generated from rabbits immunized with a KLH conjugated synthetic peptide selected from the C-terminal region of human Ufc1.

**Dilution**

WB~~1:1000  
IHC-P~~1:10~50  
FC~~1:10~50

**Format**

Purified polyclonal antibody supplied in PBS with 0.09% (W/V) sodium azide. This antibody is purified through a protein A column, followed by peptide affinity purification.

**Storage**

Maintain refrigerated at 2-8°C for up to 2 weeks. For long term storage store at -20°C in small aliquots to prevent freeze-thaw cycles.

**Precautions**

Ufc1 Antibody (C-term) is for research use only and not for use in diagnostic or therapeutic procedures.

**Ufc1 Antibody (C-term) - Protein Information**

**Name** UFC1 {ECO:0000303|PubMed:15071506, ECO:0000312|HGNC:HGNC:26941}

**Function** E1-like enzyme which specifically catalyzes the second step in ufmylation (PubMed:[15071506](#), PubMed:[29868776](#)). Accepts the ubiquitin-like modifier UFM1 from the E1

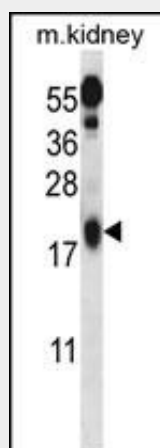
enzyme UBA5 and forms an intermediate with UFM1 via a thioester linkage (PubMed:[15071506](#), PubMed:[29868776](#)). Ufmylation is involved in reticulophagy (also called ER-phagy) induced in response to endoplasmic reticulum stress (PubMed:[32160526](#)).

### Ufc1 Antibody (C-term) - Protocols

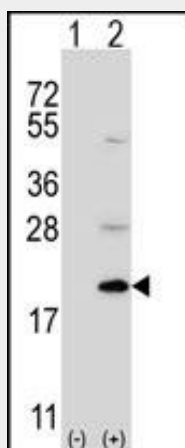
Provided below are standard protocols that you may find useful for product applications.

- [Western Blot](#)
- [Blocking Peptides](#)
- [Dot Blot](#)
- [Immunohistochemistry](#)
- [Immunofluorescence](#)
- [Immunoprecipitation](#)
- [Flow Cytometry](#)
- [Cell Culture](#)

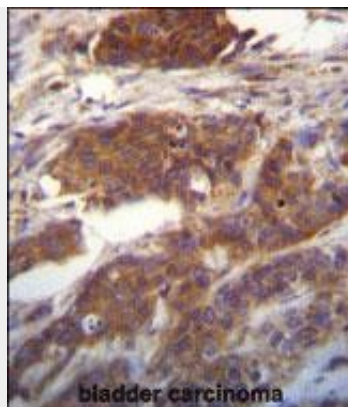
### Ufc1 Antibody (C-term) - Images



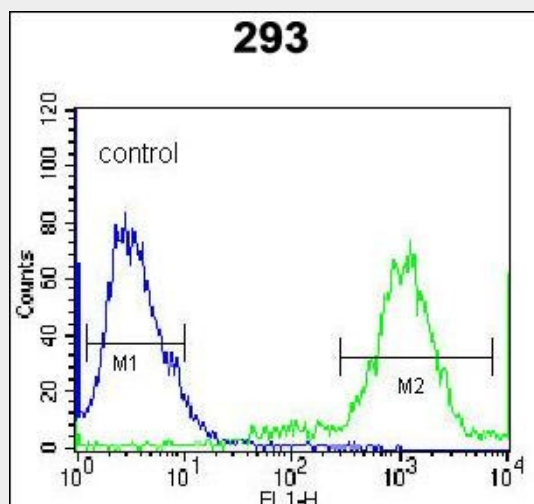
Ufc1 Antibody (C-term) (Cat. #AP2187b) western blot analysis in mouse kidney tissue lysates (35ug/lane). This demonstrates the Ufc1 antibody detected the Ufc1 protein (arrow).



Western blot analysis of Ufc1 (arrow) using rabbit polyclonal Ufc1 Antibody (C-term) (Cat. #AP2187b). 293 cell lysates (2 ug/lane) either nontransfected (Lane 1) or transiently transfected (Lane 2) with the Ufc1 gene.



Ufc1 Antibody (C-term) (Cat. #AP2187b) immunohistochemistry analysis in formalin fixed and paraffin embedded human bladder carcinoma followed by peroxidase conjugation of the secondary antibody and DAB staining. This data demonstrates the use of Ufc1 Antibody (C-term) for immunohistochemistry. Clinical relevance has not been evaluated.



Ufc1 Antibody (C-term) (Cat. #AP2187b) flow cytometric analysis of 293 cells (right histogram) compared to a negative control cell (left histogram). FITC-conjugated goat-anti-rabbit secondary antibodies were used for the analysis.

#### **Ufc1 Antibody (C-term) - Background**

Various ubiquitin-like (UBL) post-translational modifiers contribute critically to the protein degradation pathway. These UBLs are covalently linked to most target proteins through an enzymatic cascade analogous to ubiquitylation, consisting of E1 (activating), E2 (conjugating), and E3 (ligating) enzymes. Ufc1 belongs to the ubiquitin-conjugating enzyme family, and is an E2-like enzyme which forms an intermediate with UFM1, a novel ubiquitin-fold modifier, via thioester linkage.

#### **Ufc1 Antibody (C-term) - References**

Komatsu, M., et al., EMBO J. 23(9):1977-1986 (2004).