

**PHC1 Antibody (N-Term)**  
**Purified Rabbit Polyclonal Antibody (Pab)**  
**Catalog # AP21886a****Specification**

---

**PHC1 Antibody (N-Term) - Product Information**

Application	WB,E
Primary Accession	<a href="#">P78364</a>
Other Accession	<a href="#">Q64028</a>
Reactivity	Human
Predicted	Mouse
Host	Rabbit
Clonality	polyclonal
Isotype	Rabbit IgG
Calculated MW	105534

**PHC1 Antibody (N-Term) - Additional Information****Gene ID** 1911**Other Names**

Polyhomeotic-like protein 1, hPH1, Early development regulatory protein 1, PHC1, EDR1, PH1

**Target/Specificity**

This PHC1 antibody is generated from a rabbit immunized with a KLH conjugated synthetic peptide between 308-342 amino acids from human PHC1.

**Dilution**

WB~~1:2000

**Format**

Purified polyclonal antibody supplied in PBS with 0.09% (W/V) sodium azide. This antibody is purified through a protein A column, followed by peptide affinity purification.

**Storage**

Maintain refrigerated at 2-8°C for up to 2 weeks. For long term storage store at -20°C in small aliquots to prevent freeze-thaw cycles.

**Precautions**

PHC1 Antibody (N-Term) is for research use only and not for use in diagnostic or therapeutic procedures.

**PHC1 Antibody (N-Term) - Protein Information****Name** PHC1**Synonyms** EDR1, PH1

**Function** Component of a Polycomb group (PcG) multiprotein PRC1-like complex, a complex class required to maintain the transcriptionally repressive state of many genes, including Hox genes, throughout development. PcG PRC1 complex acts via chromatin remodeling and modification of histones; it mediates monoubiquitination of histone H2A 'Lys-119', rendering chromatin heritably changed in its expressibility. Required for proper control of cellular levels of GMNN expression.

#### Cellular Location

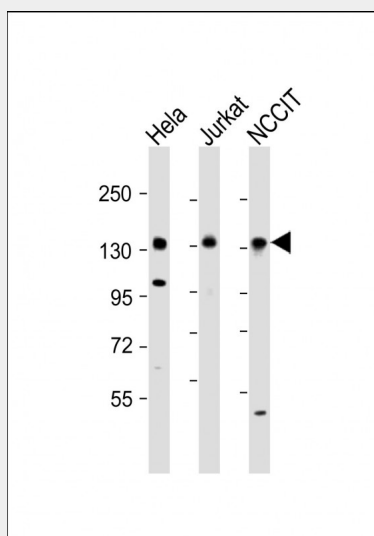
Nucleus

#### PHC1 Antibody (N-Term) - Protocols

Provided below are standard protocols that you may find useful for product applications.

- [Western Blot](#)
- [Blocking Peptides](#)
- [Dot Blot](#)
- [Immunohistochemistry](#)
- [Immunofluorescence](#)
- [Immunoprecipitation](#)
- [Flow Cytometry](#)
- [Cell Culture](#)

#### PHC1 Antibody (N-Term) - Images



All lanes : Anti-PHC1 Antibody (N-Term) at 1:2000 dilution Lane 1: HeLa whole cell lysate Lane 2: Jurkat whole cell lysate Lane 3: NCCIT whole cell lysate Lysates/proteins at 20 µg per lane. Secondary Goat Anti-Rabbit IgG, (H+L), Peroxidase conjugated at 1/10000 dilution. Predicted band size : 103 kDa Blocking/Dilution buffer: 5% NFDM/TBST.

#### PHC1 Antibody (N-Term) - Background

Component of a Polycomb group (PcG) multiprotein PRC1- like complex, a complex class required to maintain the transcriptionally repressive state of many genes, including Hox genes, throughout development. PcG PRC1 complex acts via chromatin remodeling and modification of histones; it mediates monoubiquitination of histone H2A 'Lys-119', rendering chromatin heritably changed in its expressibility. Required for proper control of cellular levels of GMNN expression.

**PHC1 Antibody (N-Term) - References**

Gunster M.J.,et al.Mol. Cell. Biol. 17:2326-2335(1997).  
Scherer S.E.,et al.Nature 440:346-351(2006).  
Mural R.J.,et al.Submitted (SEP-2005) to the EMBL/GenBank/DDBJ databases.  
Satijn D.P.E.,et al.Mol. Cell. Biol. 17:4105-4113(1997).  
Levine S.S.,et al.Mol. Cell. Biol. 22:6070-6078(2002).