

PGM1 Antibody (Center)
Purified Rabbit Polyclonal Antibody (Pab)
Catalog # AP21905c

Specification

PGM1 Antibody (Center) - Product Information

Application	WB, IHC-P,E
Primary Accession	P36871
Other Accession	Q4R5E4 , Q9D0F9 , P00949 , P38652
Reactivity	Human, Mouse
Predicted	Monkey, Rabbit, Rat
Host	Rabbit
Clonality	polyclonal
Isotype	Rabbit IgG
Calculated MW	61449

PGM1 Antibody (Center) - Additional Information

Gene ID 5236

Other Names

Phosphoglucomutase-1, PGM 1, Glucose phosphomutase 1, PGM1

Target/Specificity

This PGM1 antibody is generated from a rabbit immunized with a KLH conjugated synthetic peptide between 251-282 amino acids from the Central region of human PGM1.

Dilution

WB~~1:2000

IHC-P~~1:25

Format

Purified polyclonal antibody supplied in PBS with 0.09% (W/V) sodium azide. This antibody is purified through a protein A column, followed by peptide affinity purification.

Storage

Maintain refrigerated at 2-8°C for up to 2 weeks. For long term storage store at -20°C in small aliquots to prevent freeze-thaw cycles.

Precautions

PGM1 Antibody (Center) is for research use only and not for use in diagnostic or therapeutic procedures.

PGM1 Antibody (Center) - Protein Information

Name PGM1

Function This enzyme participates in both the breakdown and synthesis of glucose.

Cellular Location

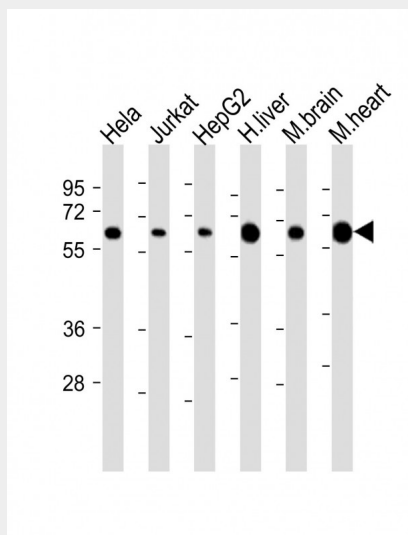
[Isoform 1]: Cytoplasm.

PGM1 Antibody (Center) - Protocols

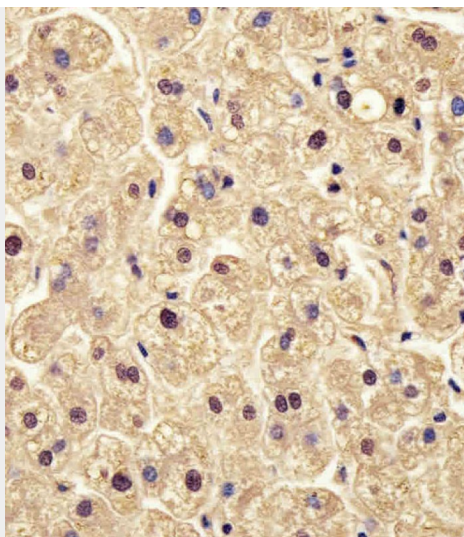
Provided below are standard protocols that you may find useful for product applications.

- [Western Blot](#)
- [Blocking Peptides](#)
- [Dot Blot](#)
- [Immunohistochemistry](#)
- [Immunofluorescence](#)
- [Immunoprecipitation](#)
- [Flow Cytometry](#)
- [Cell Culture](#)

PGM1 Antibody (Center) - Images



All lanes : Anti-PGM1 Antibody (Center) at 1:2000 dilution Lane 1: HeLa whole cell lysate Lane 2: Jurkat whole cell lysate Lane 3: HepG2 whole cell lysate Lane 4: human liver lysate Lane 5: mouse brain lysate Lane 6: mouse heart lysate Lysates/proteins at 20 µg per lane. Secondary Goat Anti-Rabbit IgG, (H+L), Peroxidase conjugated at 1/10000 dilution. Predicted band size : 61 kDa Blocking/Dilution buffer: 5% NFDM/TBST.



AP21905c staining PGM1 in human liver tissue sections by Immunohistochemistry (IHC-P - paraformaldehyde-fixed, paraffin-embedded sections). Tissue was fixed with formaldehyde and blocked with 3% BSA for 0.5 hour at room temperature; antigen retrieval was by heat mediation with a citrate buffer (pH6). Samples were incubated with primary antibody (1/25) for 1 hour at 37°C. A undiluted biotinylated goat polyvalent antibody was used as the secondary antibody.

PGM1 Antibody (Center) - Background

This enzyme participates in both the breakdown and synthesis of glucose.

PGM1 Antibody (Center) - References

Whitehouse D.B., et al. Proc. Natl. Acad. Sci. U.S.A. 89:411-415(1992).
Kalnina N., et al. Submitted (MAY-2003) to the EMBL/GenBank/DDBJ databases.
Ota T., et al. Nat. Genet. 36:40-45(2004).
Gregory S.G., et al. Nature 441:315-321(2006).
Putt W., et al. Biochem. J. 296:417-422(1993).