

**SAPCD2 Antibody (C-Term)**  
**Purified Rabbit Polyclonal Antibody (Pab)**  
**Catalog # AP21936b****Specification**

---

**SAPCD2 Antibody (C-Term) - Product Information**

Application	WB,E
Primary Accession	<a href="#">Q86UD0</a>
Reactivity	Human
Host	Rabbit
Clonality	polyclonal
Isotype	Rabbit IgG
Calculated MW	42637
Antigen Region	333-367

**SAPCD2 Antibody (C-Term) - Additional Information****Gene ID** 89958**Other Names**

Suppressor APC domain-containing protein 2, Tumor specificity and mitosis phase-dependent expression protein, TS/MDEP, p42.3, SAPCD2, C9orf140

**Target/Specificity**

This SAPCD2 antibody is generated from a rabbit immunized with a KLH conjugated synthetic peptide between 333-367 amino acids from human SAPCD2.

**Dilution**

WB~~1:2000

**Format**

Purified polyclonal antibody supplied in PBS with 0.09% (W/V) sodium azide. This antibody is purified through a protein A column, followed by peptide affinity purification.

**Storage**

Maintain refrigerated at 2-8°C for up to 2 weeks. For long term storage store at -20°C in small aliquots to prevent freeze-thaw cycles.

**Precautions**

SAPCD2 Antibody (C-Term) is for research use only and not for use in diagnostic or therapeutic procedures.

**SAPCD2 Antibody (C-Term) - Protein Information****Name** SAPCD2 ([HGNC:28055](#))**Synonyms** C9orf140

**Function** Plays a role in planar mitotic spindle orientation in retinal progenitor cells (RPCs) and promotes the production of symmetric terminal divisions (By similarity). Negatively regulates the mitotic apical cortex localization of GPM2 (PubMed:[26766442](#)). Involved also in positive regulation of cell proliferation and tumor cell growth (PubMed:[23576022](#), PubMed:[23704824](#)).

#### Cellular Location

Cytoplasm. Nucleus. Cytoplasm, cell cortex. Apical cell membrane {ECO:0000250|UniProtKB:Q9D818}. Cell junction, tight junction. Note=Localized at the apical cortical region during the M phase. In horizontally retinal progenitor dividing cells, localized at the pole cortical region from prophase to telophase cells. In vertically retinal progenitor dividing cells, not detected at the pole cortical region at any stage of mitosis {ECO:0000250|UniProtKB:Q9D818}

#### Tissue Location

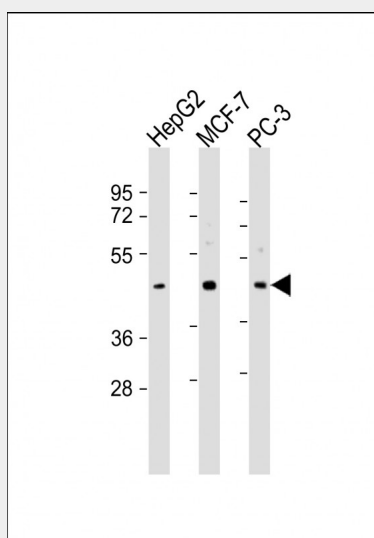
Expressed in 5-month-old fetal tissues, including stomach, intestine, colon, liver, brain, lung, heart, spleen and kidney (PubMed:17525738). Undetectable in non-cancerous adult tissues (PubMed:17525738). Expressed in many primary gastric carcinoma, but almost not in adjacent normal mucosa (PubMed:17525738). Expressed preferentially in M and G1 phases, compared to S and G2 phases (PubMed:17525738). Expression is up-regulated in hepatocellular carcinoma (HCC) and colorectal cancer (CRC) tissues (at protein level) (PubMed:23704824).

### SAPCD2 Antibody (C-Term) - Protocols

Provided below are standard protocols that you may find useful for product applications.

- [Western Blot](#)
- [Blocking Peptides](#)
- [Dot Blot](#)
- [Immunohistochemistry](#)
- [Immunofluorescence](#)
- [Immunoprecipitation](#)
- [Flow Cytometry](#)
- [Cell Culture](#)

### SAPCD2 Antibody (C-Term) - Images



All lanes : Anti-SAPCD2 Antibody (C-Term) at 1:2000 dilution Lane 1: HepG2 whole cell lysate Lane 2: MCF-7 whole cell lysate Lane 3: PC-3 whole cell lysate Lysates/proteins at 20 µg per lane.

Secondary Goat Anti-Rabbit IgG, (H+L), Peroxidase conjugated at 1/10000 dilution. Predicted band size : 43 kDa Blocking/Dilution buffer: 5% NFDM/TBST.

**SAPCD2 Antibody (C-Term) - References**

Xu X.,et al.Oncogene 26:7371-7379(2007).  
Humphray S.J.,et al.Nature 429:369-374(2004).