

**RIG Antibody (C-Term)**  
**Purified Rabbit Polyclonal Antibody (Pab)**  
**Catalog # AP21951b****Specification**

---

**RIG Antibody (C-Term) - Product Information**

Application	WB,E
Primary Accession	<a href="#">Q13278</a>
Reactivity	Human
Host	Rabbit
Clonality	polyclonal
Isotype	Rabbit IgG
Calculated MW	11984

**RIG Antibody (C-Term) - Additional Information****Other Names**

Putative protein RIG, Protein regulated in glioma, RIG

**Target/Specificity**

This RIG antibody is generated from a rabbit immunized with a KLH conjugated synthetic peptide between 58-87 amino acids from of human RIG.

**Dilution**

WB~~1:1000

**Format**

Purified polyclonal antibody supplied in PBS with 0.09% (W/V) sodium azide. This antibody is purified through a protein A column, followed by peptide affinity purification.

**Storage**

Maintain refrigerated at 2-8°C for up to 2 weeks. For long term storage store at -20°C in small aliquots to prevent freeze-thaw cycles.

**Precautions**

RIG Antibody (C-Term) is for research use only and not for use in diagnostic or therapeutic procedures.

**RIG Antibody (C-Term) - Protein Information****Name** RIG

**Function** May serve as a molecular marker for or play a role in the malignant progression of glioblastomas.

**Tissue Location**

Expressed predominantly in brain and weakly in heart and lung. Expression is reduced or undetectable in cultured glioma cells, primary glioblastoma cells and malignant glioblastoma

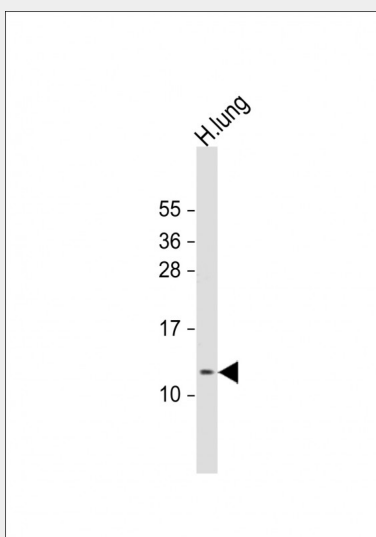
tumors.

### RIG Antibody (C-Term) - Protocols

Provided below are standard protocols that you may find useful for product applications.

- [Western Blot](#)
- [Blocking Peptides](#)
- [Dot Blot](#)
- [Immunohistochemistry](#)
- [Immunofluorescence](#)
- [Immunoprecipitation](#)
- [Flow Cytometry](#)
- [Cell Culture](#)

### RIG Antibody (C-Term) - Images



Anti-RIG Antibody (C-Term) at 1:1000 dilution + human lung lysate Lysates/proteins at 20 µg per lane. Secondary Goat Anti-Rabbit IgG, (H+L), Peroxidase conjugated at 1/10000 dilution. Predicted band size : 12 kDa Blocking/Dilution buffer: 5% NFDM/TBST.

### RIG Antibody (C-Term) - Background

May serve as a molecular marker for or play a role in the malignant progression of glioblastomas.

### RIG Antibody (C-Term) - References

Ligon A.H., et al. Oncogene 14:1075-1081(1997).