

INTS6 Antibody (N-Term)
Purified Rabbit Polyclonal Antibody (Pab)
Catalog # AP21956a**Specification**

INTS6 Antibody (N-Term) - Product Information

Application	WB,E
Primary Accession	Q9UL03
Other Accession	Q5JSJ4 , Q8BND4 , Q2TAF4 , Q5U4W6 , Q7SYD9 , Q6PCM2
Reactivity	Human
Predicted	Xenopus, Mouse, Zebrafish
Host	Rabbit
Clonality	polyclonal
Isotype	Rabbit IgG

INTS6 Antibody (N-Term) - Additional Information**Gene ID** 26512**Other Names**

Integrator complex subunit 6, Int6, DBI-1, Protein DDX26, Protein deleted in cancer 1, DICE1, INTS6, DBI1, DDX26, DDX26A

Target/Specificity

This INTS6 antibody is generated from a rabbit immunized with a KLH conjugated synthetic peptide between 135-167 amino acids from human INTS6.

Dilution

WB~~1:2000

Format

Purified polyclonal antibody supplied in PBS with 0.09% (W/V) sodium azide. This antibody is purified through a protein A column, followed by peptide affinity purification.

Storage

Maintain refrigerated at 2-8°C for up to 2 weeks. For long term storage store at -20°C in small aliquots to prevent freeze-thaw cycles.

Precautions

INTS6 Antibody (N-Term) is for research use only and not for use in diagnostic or therapeutic procedures.

INTS6 Antibody (N-Term) - Protein Information**Name** INTS6**Synonyms** DBI1, DDX26, DDX26A

Function Component of the Integrator (INT) complex, a complex involved in the small nuclear RNAs (snRNA) U1 and U2 transcription and in their 3'-box-dependent processing. The Integrator complex is associated with the C-terminal domain (CTD) of RNA polymerase II largest subunit (POLR2A) and is recruited to the U1 and U2 snRNAs genes (Probable). Mediates recruitment of cytoplasmic dynein to the nuclear envelope, probably as component of the INT complex (PubMed:[23904267](#)). May have a tumor suppressor role; an ectopic expression suppressing tumor cell growth (PubMed:[15254679](#), PubMed:[16239144](#)).

Cellular Location

Nucleus

Tissue Location

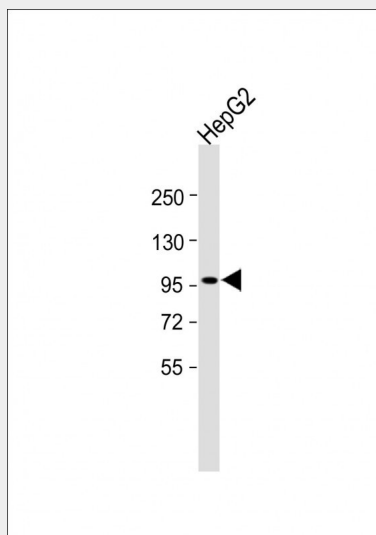
Widely expressed. Expressed in heart, brain, placenta, lung, liver, skeletal muscle, kidney and pancreas

INTS6 Antibody (N-Term) - Protocols

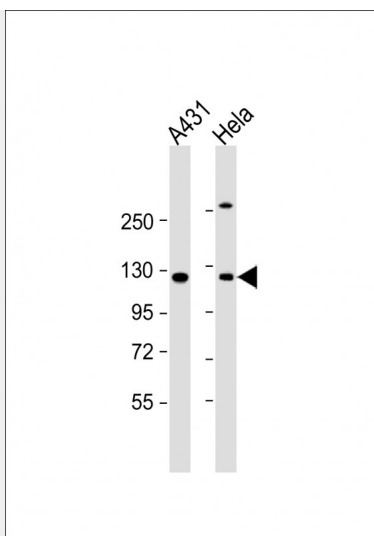
Provided below are standard protocols that you may find useful for product applications.

- [Western Blot](#)
- [Blocking Peptides](#)
- [Dot Blot](#)
- [Immunohistochemistry](#)
- [Immunofluorescence](#)
- [Immunoprecipitation](#)
- [Flow Cytometry](#)
- [Cell Culture](#)

INTS6 Antibody (N-Term) - Images



All lanes : Anti-INTS6 Antibody (N-Term) at 1:1000 dilution Lane 1: HepG2 whole cell lysate Lysates/proteins at 20 µg per lane. Secondary Goat Anti-Rabbit IgG, (H+L), Peroxidase conjugated (ASP1615) at 1/15000 dilution. Observed band size : 100kDa Blocking/Dilution buffer: 5% NFDM/TBST.



All lanes : Anti-INTS6 Antibody (N-Term) at 1:2000 dilution Lane 1: A431 whole cell lysate Lane 2: HeLa whole cell lysate Lysates/proteins at 20 µg per lane. Secondary Goat Anti-Rabbit IgG, (H+L), Peroxidase conjugated at 1/10000 dilution. Predicted band size : 100 kDa Blocking/Dilution buffer: 5% NFDM/TBST.

INTS6 Antibody (N-Term) - Background

Component of the Integrator complex, a complex involved in the small nuclear RNAs (snRNA) U1 and U2 transcription and in their 3'-box-dependent processing. The Integrator complex is associated with the C-terminal domain (CTD) of RNA polymerase II largest subunit (POLR2A) and is recruited to the U1 and U2 snRNAs genes. May have a tumor suppressor role; an ectopic expression suppressing tumor cell growth.

INTS6 Antibody (N-Term) - References

Wieland I.,et al.Oncogene 18:4530-4537(1999).
Bechtel S.,et al.BMC Genomics 8:399-399(2007).
Dunham A.,et al.Nature 428:522-528(2004).
Hoff H.B. III,et al.Submitted (APR-1999) to the EMBL/GenBank/DDBJ databases.
Wieland I.,et al.Oncol. Res. 12:491-500(2001).