

GHRL Antibody (N-Term)
Purified Rabbit Polyclonal Antibody (Pab)
Catalog # AP21965a**Specification**

GHRL Antibody (N-Term) - Product Information

Application	WB,E
Primary Accession	Q9UBU3
Reactivity	Human
Host	Rabbit
Clonality	polyclonal
Isotype	Rabbit IgG
Calculated MW	12911

GHRL Antibody (N-Term) - Additional Information**Gene ID** 51738**Other Names**

Appetite-regulating hormone, Growth hormone secretagogue, Growth hormone-releasing peptide, Motilin-related peptide, Protein M46, Ghrelin-27, Ghrelin-28, Ghrelin, Obestatin, GHRL, MTLRP

Target/Specificity

This GHRL antibody is generated from a rabbit immunized with a KLH conjugated synthetic peptide between 11-43 amino acids from human GHRL.

Dilution

WB~~1:2000

Format

Purified polyclonal antibody supplied in PBS with 0.09% (W/V) sodium azide. This antibody is purified through a protein A column, followed by peptide affinity purification.

Storage

Maintain refrigerated at 2-8°C for up to 2 weeks. For long term storage store at -20°C in small aliquots to prevent freeze-thaw cycles.

Precautions

GHRL Antibody (N-Term) is for research use only and not for use in diagnostic or therapeutic procedures.

GHRL Antibody (N-Term) - Protein Information**Name** GHRL**Synonyms** MTLRP**Function** [Ghrelin-27]: Ghrelin is the ligand for growth hormone secretagogue receptor type 1

(GHSR) (PubMed:[10604470](#)). Induces the release of growth hormone from the pituitary (PubMed:[10604470](#)). Has an appetite-stimulating effect, induces adiposity and stimulates gastric acid secretion. Involved in growth regulation.

Cellular Location
Secreted.

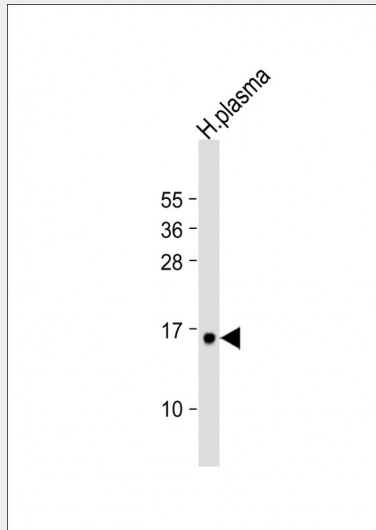
Tissue Location
Highest level in stomach. All forms are found in serum as well. Other tissues compensate for the loss of ghrelin synthesis in the stomach following gastrectomy

GHRL Antibody (N-Term) - Protocols

Provided below are standard protocols that you may find useful for product applications.

- [Western Blot](#)
- [Blocking Peptides](#)
- [Dot Blot](#)
- [Immunohistochemistry](#)
- [Immunofluorescence](#)
- [Immunoprecipitation](#)
- [Flow Cytometry](#)
- [Cell Culture](#)

GHRL Antibody (N-Term) - Images



Anti-GHRL Antibody (N-Term) at 1:2000 dilution + human plasma lysate Lysates/proteins at 20 µg per lane. Secondary Goat Anti-Rabbit IgG, (H+L), Peroxidase conjugated at 1/10000 dilution. Predicted band size : 13 kDa Blocking/Dilution buffer: 5% NFDN/TBST.

GHRL Antibody (N-Term) - Background

Ghrelin is the ligand for growth hormone secretagogue receptor type 1 (GHSR). Induces the release of growth hormone from the pituitary. Has an appetite-stimulating effect, induces adiposity and stimulates gastric acid secretion. Involved in growth regulation.

GHRL Antibody (N-Term) - References

Kojima M.,et al.Nature 402:656-660(1999).
Tomasetto C.,et al.Gastroenterology 119:395-405(2000).
Wajnrajch M.P.,et al.J. Endocr. Genet. 1:231-233(2000).
Hosoda H.,et al.J. Biol. Chem. 278:64-70(2003).
Seim I.,et al.BMC Genomics 8:298-298(2007).