

SPTBN1 Antibody (C-Term)
Purified Rabbit Polyclonal Antibody (Pab)
Catalog # AP21995b**Specification**

SPTBN1 Antibody (C-Term) - Product Information

Application	WB,E
Primary Accession	Q62261
Other Accession	Q01082
Reactivity	Mouse
Predicted	Human
Host	Rabbit
Clonality	polyclonal
Isotype	Rabbit IgG

SPTBN1 Antibody (C-Term) - Additional Information**Gene ID** 20742**Other Names**

Spectrin beta chain, non-erythrocytic 1, Beta-II spectrin, Fodrin beta chain, Spectrin, non-erythroid beta chain 1, SPTBN1, SPTB2

Target/Specificity

This SPTBN1 antibody is generated from a rabbit immunized with a KLH conjugated synthetic peptide between 2063-2097 amino acids from mouse SPTBN1.

Dilution

WB~~1:2000

Format

Purified polyclonal antibody supplied in PBS with 0.09% (W/V) sodium azide. This antibody is purified through a protein A column, followed by peptide affinity purification.

Storage

Maintain refrigerated at 2-8°C for up to 2 weeks. For long term storage store at -20°C in small aliquots to prevent freeze-thaw cycles.

Precautions

SPTBN1 Antibody (C-Term) is for research use only and not for use in diagnostic or therapeutic procedures.

SPTBN1 Antibody (C-Term) - Protein Information**Name** Sptbn1**Synonyms** Elf, Spnb-2, Spnb2, Sptb2

Function Fodrin, which seems to be involved in secretion, interacts with calmodulin in a calcium-dependent manner and is thus candidate for the calcium-dependent movement of the cytoskeleton at the membrane. Plays a critical role in central nervous system development and function.

Cellular Location

Cytoplasm, cytoskeleton. Endomembrane system. Cytoplasm, myofibril, sarcomere, M line. Cytoplasm, cytosol {ECO:0000250|UniProtKB:Q01082}. Cell membrane {ECO:0000250|UniProtKB:Q01082}. Note=Colocalizes with ANK2 in a distinct intracellular compartment of neonatal cardiomyocytes

Tissue Location

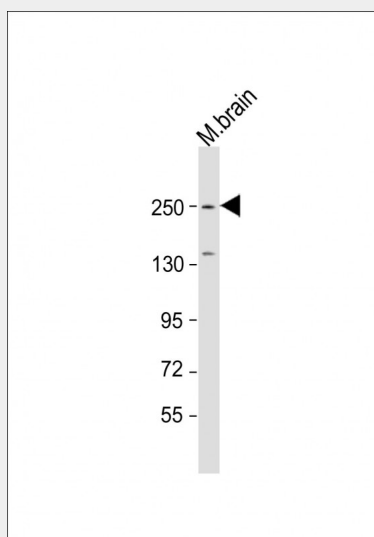
Isoform 2 is present in brain, heart, kidney and liver (at protein level).

SPTBN1 Antibody (C-Term) - Protocols

Provided below are standard protocols that you may find useful for product applications.

- [Western Blot](#)
- [Blocking Peptides](#)
- [Dot Blot](#)
- [Immunohistochemistry](#)
- [Immunofluorescence](#)
- [Immunoprecipitation](#)
- [Flow Cytometry](#)
- [Cell Culture](#)

SPTBN1 Antibody (C-Term) - Images



Anti-SPTBN1 Antibody (C-Term) at 1:2000 dilution + mouse brain lysate Lysates/proteins at 20 µg per lane. Secondary Goat Anti-Rabbit IgG, (H+L), Peroxidase conjugated at 1/10000 dilution. Predicted band size : 275 kDa Blocking/Dilution buffer: 5% NFDM/TBST.

SPTBN1 Antibody (C-Term) - Background

Fodrin, which seems to be involved in secretion, interacts with calmodulin in a calcium-dependent manner and is thus candidate for the calcium-dependent movement of the cytoskeleton at the

membrane.

SPTBN1 Antibody (C-Term) - References

Hu R.J.,et al.J. Biol. Chem. 267:18715-18722(1992).

Chen Y.,et al.J. Mol. Neurosci. 17:59-70(2001).

Totoki Y.,et al.Submitted (MAR-2005) to the EMBL/GenBank/DDBJ databases.

Hillier L.W.,et al.Nature 434:724-731(2005).

Mural R.J.,et al.Submitted (SEP-2005) to the EMBL/GenBank/DDBJ databases.