

**RPL4 Antibody (N-Term)**  
**Purified Rabbit Polyclonal Antibody (Pab)**  
**Catalog # AP22030a****Specification**

---

**RPL4 Antibody (N-Term) - Product Information**

Application	IF, WB, FC,E
Primary Accession	<a href="#">P36578</a>
Other Accession	<a href="#">Q58DW0</a> , <a href="#">Q28346</a> , <a href="#">Q9D8E6</a> , <a href="#">Q5RCR3</a> , <a href="#">G1SVW5</a>
Reactivity	Human
Predicted	Bovine, Mouse, Rabbit
Host	Rabbit
Clonality	polyclonal
Isotype	Rabbit IgG
Calculated MW	47697

**RPL4 Antibody (N-Term) - Additional Information****Gene ID** 6124**Other Names**

60S ribosomal protein L4, 60S ribosomal protein L1, RPL4, RPL1

**Target/Specificity**

This RPL4 antibody is generated from a rabbit immunized with a KLH conjugated synthetic peptide between 119-149 amino acids from human RPL4.

**Dilution**

IF~~1:25

WB~~1:2000

FC~~1:25

**Format**

Purified polyclonal antibody supplied in PBS with 0.09% (W/V) sodium azide. This antibody is purified through a protein A column, followed by peptide affinity purification.

**Storage**

Maintain refrigerated at 2-8°C for up to 2 weeks. For long term storage store at -20°C in small aliquots to prevent freeze-thaw cycles.

**Precautions**

RPL4 Antibody (N-Term) is for research use only and not for use in diagnostic or therapeutic procedures.

**RPL4 Antibody (N-Term) - Protein Information****Name** RPL4

### Synonyms RPL1

**Function** Component of the large ribosomal subunit. The ribosome is a large ribonucleoprotein complex responsible for the synthesis of proteins in the cell.

### Cellular Location

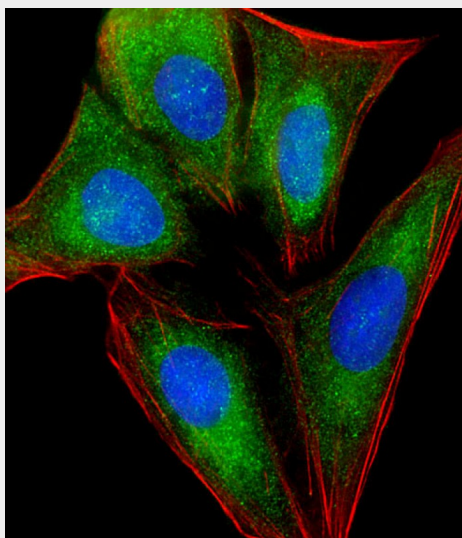
Cytoplasm.

### RPL4 Antibody (N-Term) - Protocols

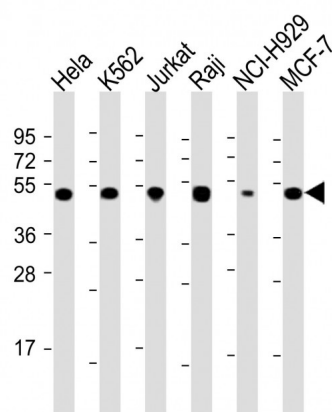
Provided below are standard protocols that you may find useful for product applications.

- [Western Blot](#)
- [Blocking Peptides](#)
- [Dot Blot](#)
- [Immunohistochemistry](#)
- [Immunofluorescence](#)
- [Immunoprecipitation](#)
- [Flow Cytometry](#)
- [Cell Culture](#)

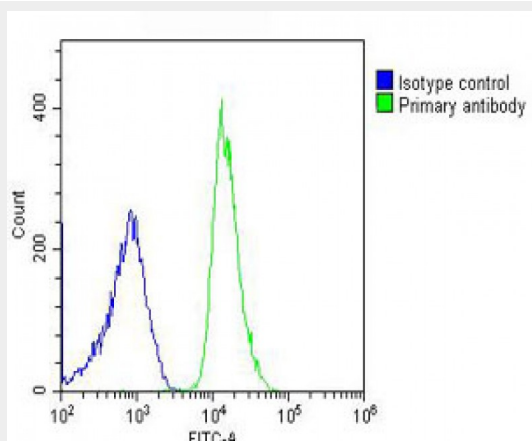
### RPL4 Antibody (N-Term) - Images



Immunofluorescent analysis of 4% paraformaldehyde-fixed, 0.1% Triton X-100 permeabilized U-2 OS (human osteosarcoma cell line) cells labeling RPL4 with AP22030a at 1/25 dilution, followed by Dylight® 488-conjugated goat anti-rabbit IgG (NK179883) secondary antibody at 1/200 dilution (green). Immunofluorescence image showing cytoplasm and nucleus staining on U-2 OS cell line. Cytoplasmic actin is detected with Dylight® 554 Phalloidin (PD18466410) at 1/100 dilution (red). The nuclear counter stain is DAPI (blue).



All lanes : Anti-RPL4 Antibody (N-Term) at 1:2000 dilution Lane 1: HeLa whole cell lysate Lane 2: K562 whole cell lysate Lane 3: Jurkat whole cell lysate Lane 4: Raji whole cell lysate Lane 5: NCI-H929 whole cell lysate Lane 6: MCF-7 whole cell lysate Lysates/proteins at 20 µg per lane. Secondary Goat Anti-Rabbit IgG, (H+L), Peroxidase conjugated at 1/10000 dilution. Predicted band size : 48 kDa Blocking/Dilution buffer: 5% NFDM/TBST.



Overlay histogram showing U-2OS cells stained with AP22030a (green line). The cells were fixed with 2% paraformaldehyde (10 min) and then permeabilized with 90% methanol for 10 min. The cells were then incubated in 2% bovine serum albumin to block non-specific protein-protein interactions followed by the antibody (AP22030a, 1:25 dilution) for 60 min at 37°C. The secondary antibody used was Goat-Anti-Rabbit IgG, DyLight® 488 Conjugated Highly Cross-Adsorbed(OH191631) at 1/200 dilution for 40 min at 37°C. Isotype control antibody (blue line) was rabbit IgG (1µg/1x10<sup>6</sup> cells) used under the same conditions. Acquisition of >10, 000 events was performed.

#### RPL4 Antibody (N-Term) - References

Bagni C.,et al.Biochim. Biophys. Acta 1216:475-478(1993).  
Bagni C.,et al.Submitted (JAN-2004) to the EMBL/GenBank/DDBJ databases.  
Kato S.,et al.Submitted (NOV-1993) to the EMBL/GenBank/DDBJ databases.  
Yoshihama M.,et al.Genome Res. 12:379-390(2002).  
Ota T.,et al.Nat. Genet. 36:40-45(2004).