

**AADACL4 Antibody (C-Term)**  
**Purified Rabbit Polyclonal Antibody (Pab)**  
**Catalog # AP22036b****Specification**

---

**AADACL4 Antibody (C-Term) - Product Information**

Application	WB,E
Primary Accession	<a href="#">Q5VUY2</a>
Reactivity	Human
Host	Rabbit
Clonality	polyclonal
Isotype	Rabbit IgG
Calculated MW	46082

**AADACL4 Antibody (C-Term) - Additional Information****Gene ID** 343066**Other Names**

Arylacetamide deacetylase-like 4, 3.1.1.-, AADACL4

**Target/Specificity**

This AADACL4 antibody is generated from a rabbit immunized with a KLH conjugated synthetic peptide between 331-362 amino acids from human AADACL4.

**Dilution**

WB~~1:2000

**Format**

Purified polyclonal antibody supplied in PBS with 0.09% (W/V) sodium azide. This antibody is purified through a protein A column, followed by peptide affinity purification.

**Storage**

Maintain refrigerated at 2-8°C for up to 2 weeks. For long term storage store at -20°C in small aliquots to prevent freeze-thaw cycles.

**Precautions**

AADACL4 Antibody (C-Term) is for research use only and not for use in diagnostic or therapeutic procedures.

**AADACL4 Antibody (C-Term) - Protein Information****Name** AADACL4**Cellular Location**

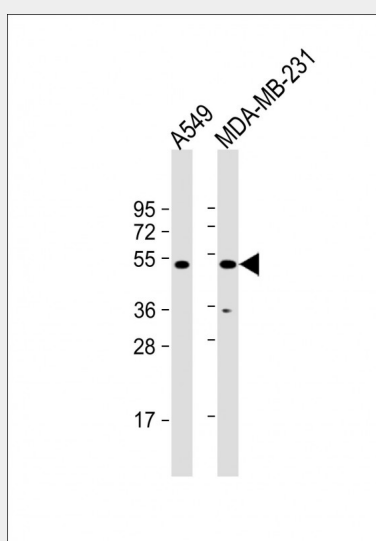
Membrane; Single-pass type II membrane protein

## AADACL4 Antibody (C-Term) - Protocols

Provided below are standard protocols that you may find useful for product applications.

- [Western Blot](#)
- [Blocking Peptides](#)
- [Dot Blot](#)
- [Immunohistochemistry](#)
- [Immunofluorescence](#)
- [Immunoprecipitation](#)
- [Flow Cytometry](#)
- [Cell Culture](#)

## AADACL4 Antibody (C-Term) - Images



All lanes : Anti-AADACL4 Antibody (C-Term) at 1:2000 dilution Lane 1: A549 whole cell lysate Lane 2: MDA-MB-231 whole cell lysate Lysates/proteins at 20 µg per lane. Secondary Goat Anti-Rabbit IgG, (H+L), Peroxidase conjugated at 1/10000 dilution. Predicted band size : 46 kDa Blocking/Dilution buffer: 5% NFDN/TBST.

## AADACL4 Antibody (C-Term) - References

Gregory S.G., et al. Nature 441:315-321(2006).