

**NDC80 Antibody (C-Term)**  
**Purified Rabbit Polyclonal Antibody (Pab)**  
**Catalog # AP22066b****Specification**

---

**NDC80 Antibody (C-Term) - Product Information**

Application	WB,E
Primary Accession	<a href="#">O14777</a>
Other Accession	<a href="#">Q4R630</a>
Reactivity	Human
Host	Rabbit
Clonality	polyclonal
Isotype	Rabbit IgG
Calculated MW	73913

**NDC80 Antibody (C-Term) - Additional Information****Gene ID** 10403**Other Names**

Kinetochores protein NDC80 homolog, Highly expressed in cancer protein, Kinetochores protein Hec1, HsHec1, Kinetochores-associated protein 2, Retinoblastoma-associated protein HEC, NDC80, HEC, HEC1, KNTC2

**Target/Specificity**

This NDC80 antibody is generated from a rabbit immunized with a KLH conjugated synthetic peptide between 508-539 amino acids from human NDC80.

**Dilution**

WB~~1:2000

**Format**

Purified polyclonal antibody supplied in PBS with 0.09% (W/V) sodium azide. This antibody is purified through a protein A column, followed by peptide affinity purification.

**Storage**

Maintain refrigerated at 2-8°C for up to 2 weeks. For long term storage store at -20°C in small aliquots to prevent freeze-thaw cycles.

**Precautions**

NDC80 Antibody (C-Term) is for research use only and not for use in diagnostic or therapeutic procedures.

**NDC80 Antibody (C-Term) - Protein Information****Name** NDC80**Synonyms** HEC, HEC1, KNTC2

**Function** Acts as a component of the essential kinetochore-associated NDC80 complex, which is required for chromosome segregation and spindle checkpoint activity (PubMed:[9315664](#), PubMed:[12351790](#), PubMed:[14654001](#), PubMed:[14699129](#), PubMed:[15062103](#), PubMed:[15235793](#), PubMed:[15239953](#), PubMed:[15548592](#), PubMed:[16732327](#), PubMed:[30409912](#)). Required for kinetochore integrity and the organization of stable microtubule binding sites in the outer plate of the kinetochore (PubMed:[15548592](#), PubMed:[30409912](#)). The NDC80 complex synergistically enhances the affinity of the SKA1 complex for microtubules and may allow the NDC80 complex to track depolymerizing microtubules (PubMed:[23085020](#)). Plays a role in chromosome congression and is essential for the end-on attachment of the kinetochores to spindle microtubules (PubMed:[25743205](#), PubMed:[23891108](#)).

#### Cellular Location

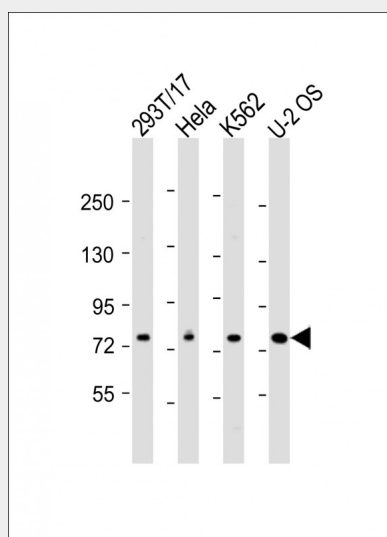
Nucleus. Chromosome, centromere, kinetochore. Note=Localizes to kinetochores from late prophase to anaphase (PubMed:14699129) Localizes specifically to the outer plate of the kinetochore (PubMed:14699129).

#### NDC80 Antibody (C-Term) - Protocols

Provided below are standard protocols that you may find useful for product applications.

- [Western Blot](#)
- [Blocking Peptides](#)
- [Dot Blot](#)
- [Immunohistochemistry](#)
- [Immunofluorescence](#)
- [Immunoprecipitation](#)
- [Flow Cytometry](#)
- [Cell Culture](#)

#### NDC80 Antibody (C-Term) - Images



All lanes : Anti-NDC80 Antibody (C-Term) at 1:2000 dilution Lane 1: 293T/17 whole cell lysate Lane 2: HeLa whole cell lysate Lane 3: K562 whole cell lysate Lane 4: U-2 OS whole cell lysate Lysates/proteins at 20 µg per lane. Secondary Goat Anti-Rabbit IgG, (H+L), Peroxidase conjugated at 1/10000 dilution. Predicted band size : 74 kDa Blocking/Dilution buffer: 5% NFD/MTBST.

#### NDC80 Antibody (C-Term) - Background

Acts as a component of the essential kinetochore- associated NDC80 complex, which is required for chromosome segregation and spindle checkpoint activity. Required for kinetochore integrity and the organization of stable microtubule binding sites in the outer plate of the kinetochore.

**NDC80 Antibody (C-Term) - References**

Chen Y.,et al.Mol. Cell. Biol. 17:6049-6056(1997).  
Chen Y.,et al.J. Biol. Chem. 272:24081-24087(1997).  
Zheng L.,et al.Mol. Cell. Biol. 19:5417-5428(1999).  
Zheng L.,et al.Mol. Cell. Biol. 20:3529-3537(2000).  
Chen Y.,et al.J. Biol. Chem. 277:49408-49416(2002).